



QUARTERLY STATEMENT

AS OF SEPTEMBER 30, 2011
OF THE CONDITION AND AFFAIRS OF THE

Permanent General Assurance Corporation

NAIC Group Code	3638	3638	NAIC Company Code	37648	Employer's ID Number	13-2960609
	(Current Period)	(Prior Period)				
Organized under the Laws of	Ohio		State of Domicile or Port of Entry	Ohio		
Country of Domicile	United States					
Incorporated/Organized	09/28/1994		Commenced Business	09/28/1994		
Statutory Home Office	9700 Rockside Road, Suite 250		Valley View, OH 44125			
	(Street and Number)		(City or Town, State and Zip Code)			
Main Administrative Office	2636 Elm Hill Pike, Suite 510		Nashville, TN 37214	615-242-1961		
	(Street and Number)		(City or Town, State and Zip Code)	(Area Code) (Telephone Number)		
Mail Address	P.O. Box 305054		Nashville, TN 37230-5054			
	(Street and Number or P.O. Box)		(City or Town, State and Zip Code)			
Primary Location of Books and Records	2636 Elm Hill Pike, Suite 510		Nashville, TN 37214	615-744-1221		
	(Street and Number)		(City or Town, State and Zip Code)	(Area Code) (Telephone Number)		
Internet Web Site Address	www.pgac.com					
Statutory Statement Contact	R BURTON BARNES JR		615-744-1221			
	(Name)		(Area Code) (Telephone Number) (Extension)			
	BBARNES@PGAC.COM		615-744-1608			
	(E-Mail Address)		(Fax Number)			

OFFICERS

Name	Title	Name	Title
RANDY PHILIP PARKER	Chairman, President & CEO	BRIAN MICHAEL DONOVAN	CFO, Treasurer & Assistant Secretary
DAVID LEE HETTINGER	Sr. V.P., Chief Administrative Officer		

OTHER OFFICERS

SHERRILL CLEEK KAISER	Secretary	EILEEN MARY MANNERS	Assistant V.P., Claims
ALLISON WALKER GARRETSON	V.P., Underwriting & Premium Finance	BARRY SCOT DICE	V.P., Direct Sales & Marketing
KENTON LEE FOURMAN	V.P., Chief Information Officer	CHARLES WESLEY KIRKLAND, JR.	V.P., Claims
ERIC WILLIAM BUR	V.P., IA Sales & Distribution	JOHN ALLEN HOLLAR	V.P., Product Management
ANDREW PETER MARTIN	Sr. V.P. Company-wide Sales&Distribution	ROBERT EUGENE NELSON	Assistant Secretary
ELIZABETH ANN ROBERTS	V.P., Human Resources	TODD RAYMOND HAKALA	V.P., Actuary Services

DIRECTORS OR TRUSTEES

BRIAN MICHAEL DONOVAN	DAVID LEE HETTINGER	ANDREW PETER MARTIN	ELIZABETH ANN ROBERTS
RANDY PHILIP PARKER			

State ofTennessee.....
County ofDavidson.....

The officers of this reporting entity being duly sworn, each depose and say that they are the described officers of said reporting entity, and that on the reporting period stated above, all of the herein described assets were the absolute property of the said reporting entity, free and clear from any liens or claims thereon, except as herein stated, and that this statement, together with related exhibits, schedules and explanations therein contained, annexed or referred to, is a full and true statement of all the assets and liabilities and of the condition and affairs of the said reporting entity as of the reporting period stated above, and of its income and deductions therefrom for the period ended, and have been completed in accordance with the NAIC Annual Statement Instructions and Accounting Practices and Procedures manual except to the extent that: (1) state law may differ; or, (2) that state rules or regulations require differences in reporting not related to accounting practices and procedures, according to the best of their information, knowledge and belief, respectively. Furthermore, the scope of this attestation by the described officers also includes the related corresponding electronic filing with the NAIC, when required, that is an exact copy (except for formatting differences due to electronic filing) of the enclosed statement. The electronic filing may be requested by various regulators in lieu of or in addition to the enclosed statement.

RANDY PHILIP PARKER Chairman, President & CEO	BRIAN MICHAEL DONOVAN CFO, Treasurer & Assistant Secretary	ROBERT EUGENE NELSON Assistant Secretary
Subscribed and sworn to before me this 7th day of November, 2011		a. Is this an original filing? Yes [X] No [] b. If no, 1. State the amendment number 2. Date filed 3. Number of pages attached
Susan Hawk, Notary Public May 5, 2015		

ASSETS

	Current Statement Date			4 December 31 Prior Year Net Admitted Assets
	1 Assets	2 Nonadmitted Assets	3 Net Admitted Assets (Cols. 1 - 2)	
1. Bonds	119,206,252		119,206,252	110,678,145
2. Stocks:				
2.1 Preferred stocks			0	0
2.2 Common stocks	5,621,078	352,874	5,268,204	0
3. Mortgage loans on real estate:				
3.1 First liens			0	0
3.2 Other than first liens			0	0
4. Real estate:				
4.1 Properties occupied by the company (less \$ encumbrances)			0	0
4.2 Properties held for the production of income (less \$ encumbrances)			0	0
4.3 Properties held for sale (less \$ encumbrances)			0	0
5. Cash (\$0), cash equivalents (\$0) and short-term investments (\$2,872,895)	2,872,895		2,872,895	14,860,820
6. Contract loans (including \$premium notes)			0	0
7. Derivatives			0	0
8. Other invested assets	0		0	0
9. Receivables for securities	2,966,091		2,966,091	0
10. Securities lending reinvested collateral assets			0	0
11. Aggregate write-ins for invested assets	0	0	0	15,171
12. Subtotals, cash and invested assets (Lines 1 to 11)	130,666,316	352,874	130,313,442	125,554,136
13. Title plants less \$charged off (for Title insurers only)			0	0
14. Investment income due and accrued	1,177,594		1,177,594	1,212,248
15. Premiums and considerations:				
15.1 Uncollected premiums and agents' balances in the course of collection	10,502,105	111,992	10,390,113	11,538,715
15.2 Deferred premiums, agents' balances and installments booked but deferred and not yet due (including \$earned but unbilled premiums)	53,034,999		53,034,999	49,939,951
15.3 Accrued retrospective premiums			0	0
16. Reinsurance:				
16.1 Amounts recoverable from reinsurers	2,584,796		2,584,796	162,267
16.2 Funds held by or deposited with reinsured companies			0	0
16.3 Other amounts receivable under reinsurance contracts			0	0
17. Amounts receivable relating to uninsured plans			0	0
18.1 Current federal and foreign income tax recoverable and interest thereon	708,551		708,551	2,100,678
18.2 Net deferred tax asset	7,335,702	639,372	6,696,330	5,725,205
19. Guaranty funds receivable or on deposit	6,625		6,625	6,625
20. Electronic data processing equipment and software			0	0
21. Furniture and equipment, including health care delivery assets (\$)			0	0
22. Net adjustment in assets and liabilities due to foreign exchange rates			0	0
23. Receivables from parent, subsidiaries and affiliates	7,002,352		7,002,352	458,720
24. Health care (\$) and other amounts receivable			0	0
25. Aggregate write-ins for other than invested assets	0	0	0	0
26. Total assets excluding Separate Accounts, Segregated Accounts and Protected Cell Accounts (Lines 12 to 25)	213,019,040	1,104,238	211,914,802	196,698,545
27. From Separate Accounts, Segregated Accounts and Protected Cell Accounts			0	0
28. Total (Lines 26 and 27)	213,019,040	1,104,238	211,914,802	196,698,545
DETAILS OF WRITE-INS				
1101. Income due on security			0	15,171
1102.				
1103.				
1198. Summary of remaining write-ins for Line 11 from overflow page	0	0	0	0
1199. Totals (Lines 1101 through 1103 plus 1198)(Line 11 above)	0	0	0	15,171
2501.				
2502.				
2503.				
2598. Summary of remaining write-ins for Line 25 from overflow page	0	0	0	0
2599. Totals (Lines 2501 through 2503 plus 2598)(Line 25 above)	0	0	0	0

LIABILITIES, SURPLUS AND OTHER FUNDS

	1 Current Statement Date	2 December 31, Prior Year
1. Losses (current accident year \$29,941,055)	41,548,402	36,537,302
2. Reinsurance payable on paid losses and loss adjustment expenses		239,181
3. Loss adjustment expenses	7,924,224	6,624,134
4. Commissions payable, contingent commissions and other similar charges	198,170	105,444
5. Other expenses (excluding taxes, licenses and fees)		0
6. Taxes, licenses and fees (excluding federal and foreign income taxes)	1,069,489	839,775
7.1 Current federal and foreign income taxes (including \$ on realized capital gains (losses))		0
7.2 Net deferred tax liability		0
8. Borrowed money \$ and interest thereon \$		0
9. Unearned premiums (after deducting unearned premiums for ceded reinsurance of \$48,879,633 and including warranty reserves of \$)	70,338,802	65,797,420
10. Advance premium	1,619,738	1,580,851
11. Dividends declared and unpaid:		
11.1 Stockholders		0
11.2 Policyholders		0
12. Ceded reinsurance premiums payable (net of ceding commissions)	1,404,972	1,878,744
13. Funds held by company under reinsurance treaties		0
14. Amounts withheld or retained by company for account of others		0
15. Remittances and items not allocated		0
16. Provision for reinsurance		0
17. Net adjustments in assets and liabilities due to foreign exchange rates		0
18. Drafts outstanding		0
19. Payable to parent, subsidiaries and affiliates		0
20. Derivatives		0
21. Payable for securities		0
22. Payable for securities lending		0
23. Liability for amounts held under uninsured plans		0
24. Capital notes \$ and interest thereon \$		0
25. Aggregate write-ins for liabilities	0	0
26. Total liabilities excluding protected cell liabilities (Lines 1 through 25)	124,103,797	113,602,851
27. Protected cell liabilities		0
28. Total liabilities (Lines 26 and 27)	124,103,797	113,602,851
29. Aggregate write-ins for special surplus funds	0	0
30. Common capital stock	5,000,000	5,000,000
31. Preferred capital stock		0
32. Aggregate write-ins for other than special surplus funds	0	0
33. Surplus notes		0
34. Gross paid in and contributed surplus	34,274,183	33,574,183
35. Unassigned funds (surplus)	48,536,822	44,521,511
36. Less treasury stock, at cost:		
36.1 shares common (value included in Line 30 \$)		0
36.2 shares preferred (value included in Line 31 \$)		0
37. Surplus as regards policyholders (Lines 29 to 35, less 36)	87,811,005	83,095,694
38. Totals (Page 2, Line 28, Col. 3)	211,914,802	196,698,545
DETAILS OF WRITE-INS		
2501.		
2502.		
2503.		
2598. Summary of remaining write-ins for Line 25 from overflow page	0	0
2599. Totals (Lines 2501 through 2503 plus 2598) (Line 25 above)	0	0
2901.		
2902.		
2903.		
2998. Summary of remaining write-ins for Line 29 from overflow page	0	0
2999. Totals (Lines 2901 through 2903 plus 2998) (Line 29 above)	0	0
3201.		
3202.		
3203.		
3298. Summary of remaining write-ins for Line 32 from overflow page	0	0
3299. Totals (Lines 3201 through 3203 plus 3298) (Line 32 above)	0	0

STATEMENT OF INCOME

	1 Current Year to Date	2 Prior Year to Date	3 Prior Year Ended December 31
UNDERWRITING INCOME			
1. Premiums earned:			
1.1 Direct (written \$144,385,202)	139,834,451	128,040,033	171,150,802
1.2 Assumed (written \$78,012,100)	74,865,595	66,851,316	90,591,543
1.3 Ceded (written \$91,182,894)	88,027,019	79,905,453	107,314,361
1.4 Net (written \$131,214,408)	126,673,027	114,985,896	154,427,984
DEDUCTIONS:			
2. Losses incurred (current accident year \$75,388,065):			
2.1 Direct	87,429,772	77,055,009	102,257,650
2.2 Assumed	50,233,803	42,815,676	59,364,260
2.3 Ceded	58,274,168	49,732,407	66,162,804
2.4 Net	79,389,407	70,138,278	95,459,106
3. Loss adjustment expenses incurred	13,918,382	11,068,871	13,978,211
4. Other underwriting expenses incurred	51,879,662	46,872,385	61,806,303
5. Aggregate write-ins for underwriting deductions	0	0	0
6. Total underwriting deductions (Lines 2 through 5)	145,187,451	128,079,534	171,243,620
7. Net income of protected cells	0	0	0
8. Net underwriting gain (loss) (Line 1 minus Line 6 + Line 7)	(18,514,424)	(13,093,638)	(16,815,636)
INVESTMENT INCOME			
9. Net investment income earned	4,352,864	4,532,856	5,914,624
10. Net realized capital gains (losses) less capital gains tax of \$	3,378,690	745,558	(787,966)
11. Net investment gain (loss) (Lines 9 + 10)	7,731,554	5,278,414	5,126,658
OTHER INCOME			
12. Net gain or (loss) from agents' or premium balances charged off (amount recovered \$ amount charged off \$)	0	0	0
13. Finance and service charges not included in premiums	14,389,123	14,065,392	18,317,070
14. Aggregate write-ins for miscellaneous income	64,841	207,450	450,012
15. Total other income (Lines 12 through 14)	14,453,964	14,272,842	18,767,082
16. Net income before dividends to policyholders, after capital gains tax and before all other federal and foreign income taxes (Lines 8 + 11 + 15)	3,671,094	6,457,618	7,078,104
17. Dividends to policyholders	0	0	0
18. Net income, after dividends to policyholders, after capital gains tax and before all other federal and foreign income taxes (Line 16 minus Line 17)	3,671,094	6,457,618	7,078,104
19. Federal and foreign income taxes incurred	258,251	1,272,409	2,184,098
20. Net income (Line 18 minus Line 19)(to Line 22)	3,412,843	5,185,209	4,894,006
CAPITAL AND SURPLUS ACCOUNT			
21. Surplus as regards policyholders, December 31 prior year	83,095,694	76,907,172	76,907,172
22. Net income (from Line 20)	3,412,843	5,185,209	4,894,006
23. Net transfers (to) from Protected Cell accounts	0	0	0
24. Change in net unrealized capital gains or (losses) less capital gains tax of \$	(1,648,453)	312,993	3,101,954
25. Change in net unrealized foreign exchange capital gain (loss)	0	0	0
26. Change in net deferred income tax	91,384	(162,005)	(368,397)
27. Change in nonadmitted assets	2,159,537	(879,824)	(1,435,067)
28. Change in provision for reinsurance	0	0	0
29. Change in surplus notes	0	0	0
30. Surplus (contributed to) withdrawn from protected cells	0	0	0
31. Cumulative effect of changes in accounting principles	0	0	0
32. Capital changes:			
32.1 Paid in	0	0	0
32.2 Transferred from surplus (Stock Dividend)	0	0	0
32.3 Transferred to surplus	0	0	0
33. Surplus adjustments:			
33.1 Paid in	700,000	0	0
33.2 Transferred to capital (Stock Dividend)	0	0	0
33.3 Transferred from capital	0	0	0
34. Net remittances from or (to) Home Office	0	0	0
35. Dividends to stockholders	0	0	0
36. Change in treasury stock	0	0	0
37. Aggregate write-ins for gains and losses in surplus	0	0	(3,974)
38. Change in surplus as regards policyholders (Lines 22 through 37)	4,715,311	4,456,373	6,188,522
39. Surplus as regards policyholders, as of statement date (Lines 21 plus 38)	87,811,005	81,363,545	83,095,694
DETAILS OF WRITE-INS			
0501.			
0502.			
0503.			
0598. Summary of remaining write-ins for Line 5 from overflow page	0	0	0
0599. TOTALS (Lines 0501 through 0503 plus 0598) (Line 5 above)	0	0	0
1401. FINANCE ROYALTY INCOME	508	32,241	37,875
1402. OTHER INTEREST (EXPENSE)	64,333	119,192	361,656
1403. OTHER INCOME	0	14,994	0
1498. Summary of remaining write-ins for Line 14 from overflow page	0	41,023	50,481
1499. TOTALS (Lines 1401 through 1403 plus 1498) (Line 14 above)	64,841	207,450	450,012
3701. OTHER INCREASES / (DECREASES)	0	0	(3,974)
3702.	0	0	0
3703.	0	0	0
3798. Summary of remaining write-ins for Line 37 from overflow page	0	0	0
3799. TOTALS (Lines 3701 through 3703 plus 3798) (Line 37 above)	0	0	(3,974)

CASH FLOW

	1 Current Year To Date	2 Prior Year To Date	3 Prior Year Ended December 31
Cash from Operations			
1. Premiums collected net of reinsurance.....	128,927,323	110,273,325	148,622,618
2. Net investment income	4,812,383	4,738,606	6,319,884
3. Miscellaneous income	14,453,964	14,272,842	18,767,082
4. Total (Lines 1 to 3)	148,193,670	129,284,773	173,709,584
5. Benefit and loss related payments	77,040,017	72,813,565	96,618,494
6. Net transfers to Separate Accounts, Segregated Accounts and Protected Cell Accounts.....	0	0	0
7. Commissions, expenses paid and aggregate write-ins for deductions	64,175,514	58,191,271	77,970,625
8. Dividends paid to policyholders	0	0	0
9. Federal and foreign income taxes paid (recovered) net of \$ tax on capital gains (losses).....	(1,133,876)	2,126,472	4,460,324
10. Total (Lines 5 through 9)	140,081,655	133,131,308	179,049,443
11. Net cash from operations (Line 4 minus Line 10)	8,112,015	(3,846,535)	(5,339,859)
Cash from Investments			
12. Proceeds from investments sold, matured or repaid:			
12.1 Bonds	48,471,706	25,644,544	36,429,661
12.2 Stocks	1,500,000	0	0
12.3 Mortgage loans	0	0	0
12.4 Real estate	0	0	0
12.5 Other invested assets	0	0	0
12.6 Net gains or (losses) on cash, cash equivalents and short-term investments	0	0	0
12.7 Miscellaneous proceeds	0	1,008,092	0
12.8 Total investment proceeds (Lines 12.1 to 12.7)	49,971,706	26,652,636	36,429,661
13. Cost of investments acquired (long-term only):			
13.1 Bonds	56,283,703	22,075,348	27,561,519
13.2 Stocks	4,994,781	1,150,000	1,150,000
13.3 Mortgage loans	0	0	0
13.4 Real estate	0	0	0
13.5 Other invested assets	0	0	0
13.6 Miscellaneous applications	2,966,091	0	0
13.7 Total investments acquired (Lines 13.1 to 13.6)	64,244,575	23,225,348	28,711,519
14. Net increase (or decrease) in contract loans and premium notes	0	0	0
15. Net cash from investments (Line 12.8 minus Line 13.7 and Line 14)	(14,272,869)	3,427,288	7,718,142
Cash from Financing and Miscellaneous Sources			
16. Cash provided (applied):			
16.1 Surplus notes, capital notes	0	0	0
16.2 Capital and paid in surplus, less treasury stock.....	700,000	0	0
16.3 Borrowed funds	0	0	0
16.4 Net deposits on deposit-type contracts and other insurance liabilities	0	0	0
16.5 Dividends to stockholders	0	0	0
16.6 Other cash provided (applied).....	(6,527,071)	5,406,717	8,068,214
17. Net cash from financing and miscellaneous sources (Line 16.1 through Line 16.4 minus Line 16.5 plus Line 16.6)	(5,827,071)	5,406,717	8,068,214
RECONCILIATION OF CASH, CASH EQUIVALENTS AND SHORT-TERM INVESTMENTS			
18. Net change in cash, cash equivalents and short-term investments (Line 11, plus Lines 15 and 17)	(11,987,925)	4,987,470	10,446,497
19. Cash, cash equivalents and short-term investments:			
19.1 Beginning of year.....	14,860,820	4,414,323	4,414,323
19.2 End of period (Line 18 plus Line 19.1)	2,872,895	9,401,793	14,860,820

NOTES TO FINANCIAL STATEMENTS

1. Summary of Significant Accounting Policies

A. The accompanying financial statements of Permanent General Assurance Corporation have been prepared in accordance with the NAIC Accounting Practices and Procedures Manual except to the extent that Ohio law differs. However, as of this Statement date, there have been no requests from the State of Ohio to depart from the prescribed NAIC guidelines.

A reconciliation of the Company's net income and capital and surplus between NAIC SAP and practices prescribed and permitted by the state of Ohio is shown below:

	<u>2011</u>	<u>2010</u>
<u>Net Income</u>		
(1) Ohio company state basis (Page 4, Line 20, Column 1 & 2)	\$3,413	\$4,894
(2) State prescribed practices that increase / (decrease) NAIC SAP:		
(3) State permitted practices that increase / (decrease) NAIC SAP:		
(4) NAIC SAP	\$3,413	\$4,894
<u>Surplus</u>		
(5) Ohio company state basis (Page 3, Line 37, Column 1 & 2)	\$87,811	\$83,096
(6) State prescribed practices that increase / (decrease) NAIC SAP:		
(7) State permitted practices that increase / (decrease) NAIC SAP:		
(8) NAIC SAP	\$87,811	\$83,096

B. Use of Estimates in the Preparation of the Financial Statements

The preparation of financial statements in conformity with Statutory Accounting Principles requires management to make estimates and assumptions that affect the reported amounts of assets and liabilities. It also requires disclosure of contingent assets and liabilities at the date of the financial statements and the reported amounts of revenue and expenses during the period. Actual results could differ from those estimates.

C. Accounting Policy

Premiums are earned over the terms of the related insurance policies. Unearned premium reserves are established to cover the unexpired portion of premiums written. Such reserves are computed by pro rata methods for direct business.

Expenses incurred in connection with acquiring new insurance business, including such acquisition costs as sales commissions, are charged to operations as incurred. Expenses incurred are reduced for ceding allowances received or receivable.

- (1) Short-term investments are stated at cost.
- (2) Bonds are stated at amortized cost using the yield to maturity method.
- (3) Common stocks, if owned are stated at lower of cost or market with exception to the stock of PGAC's wholly owned subsidiary (which is valued as described in the NAIC Valuation of Securities Manual).
- (4) The Company holds no preferred stock as of the statement date.
- (5) The Company holds no mortgage loans.
- (6) The basis for loan backed securities is amortized cost or the lower of amortized cost or fair market value. The adjustment methodology used for each type of security is prospective for securities which an OTTI loss has been recognized and retrospective for all other securities.
- (7) The Company values PGA Service Corporation (a wholly owned subsidiary) in accordance with the NAIC policies and procedures manual.
- (8) The company has no investments in joint ventures, partnerships & limited liability company.
- (9) The company has no investments in derivatives.
- (10) The Company anticipates investment income as a factor in the premium deficiency calculation.
- (11) Reserve for losses represents the estimated liability for claims reported to the Company and an amount, based on actuarially determined reserves for losses incurred but not reported. Such liabilities are necessarily based on assumptions and estimates and while management believes the amount is adequate, the ultimate liability may be in excess of or less than the amount provided. The methods for making such estimates and for establishing the resulting liability is continually reviewed and any adjustments are reflected in the period determined.
- (12) The Company has not modified its capitalization policy from the prior year.
- (13) The Company has no pharmaceutical rebate receivables.

2. Accounting Changes and Corrections of Errors:
No change.

3. Business Combinations and Goodwill
None.

4. Discontinued Operations
None.

5. Investments

- A) The Company has no mortgage loans.
- B) The Company did not restructure any debt.
- C) The Company has no reverse mortgages.
- D) Loan-Backed Securities
 - (1) The source used to determine prepayment assumptions is Intex.
 - (2) Not applicable.
 - (3) Securities with recognized impairments currently held.

NOTES TO FINANCIAL STATEMENTS

Cusip	Book / Adjusted Carrying Value Amortized Cost Before Current Period OTTI	Present Value of Projected Cashflows	Recognized Other-Than Temporary Impairment to Date	Amortized Cost At Report Date	Fair Value at Report Date
05952AAL8	273,101	267,445	(6,353)	273,624	209,416
07388YAW2	987,319	41,525	(678,205)	213,984	280,000
17307GPJ1	703,117	75,716	(897,177)	39,055	37,851
20173QAE1	967,372	967,314	(196)	970,566	1,036,905
32051GY90	50,903	41,847	(896,921)	26,304	7,567
466247WV1	889,384	790,761	(166,117)	766,460	77,199
61757RAD9	879,593	878,023	(1,570)	894,464	1,031,204
73316PBB5	468,281	468,137	(144)	469,081	219,786
73316PCK4	606,897	606,809	(88)	607,218	342,945
76112BDV9	601,961	601,704	(257)	602,541	338,932
Total	6,427,929	4,739,282	(2,647,028)	4,863,297	3,581,806

(4) All impaired securities (fair value is less than amortized cost) for which an other-than-temporary impairment has not been recognized in earnings as a realized loss (including securities with a recognized other-than-temporary impairment for non-interest related declines when a non-recognized interest related impairment remains):

Continuous Unrealized Loss	Less than 12 Months	(\$593,993)
	12 Months or Longer	(\$870,128)

Fair Value of Security with Continuous Unrealized Loss

Less than 12 Months	\$7,725,466
12 Months or Longer	\$1,784,904

(5) Not Applicable

- E) The Company has no repurchase agreements.
- F) The Company has no real estate investments.
- G) The Company has no low-income housing tax credits (LIHTC).

6. Joint Ventures, Partnerships and Limited Liability Companies
None.

7. Investment Income
All investment income due and accrued is admitted.

8. Derivative Instruments
None.

9. Income Taxes

A. The components of the net DTA recognized in the Company's Assets, Liabilities, Surplus and Other Funds is as follows:

	30-Sept.-11			31-Dec-10		
Ordinary	6,797,918	537,783	7,335,702	5,818,757	1,425,560	7,244,318
Total gross deferred tax liabilities			-			-
Net deferred tax asset	6,797,918	537,783	7,335,702	5,818,757	1,425,560	7,244,318
Deferred tax assets nonadmitted			(639,372)			(1,519,112)
Net admitted deferred tax asset			6,696,330			5,725,205
(Increase) Decrease in nonadmitted asset			879,740			(63,082)

The Company has not elected to admit additional DTAs pursuant to SSAP 10R, paragraph 10e. The current period election does not differ from the prior reporting period.

The amount of each result or component of the calculation, by tax character of paragraphs 10a, 10bi, 10bii, 10c:

	30-Sept.-11			31-Dec-10		
	Ordinary	Capital	Total	Ordinary	Capital	Total
Recovered through loss carrybacks (10a)	2,305,214	-	2,305,214	5,712,563		5,712,563
Expected to be recognized within 1 year (10b)	4,391,117		4,391,117	12,642		12,642
Adjusted gross DTAs offset against DTLs (10c)	-		-			-

Risk-based capital level used in paragraph 10d:

NOTES TO FINANCIAL STATEMENTS

Total adjusted capital	87,811,005	83,095,694
Authorized control level	18,136,975	18,136,975

The following amounts resulting from the calculation in paragraphs 10a, 10b, and 10c:

	30-Sept.-11	31-Dec-10
Admitted DTAs	6,696,330	5,725,205
Admitted Assets	211,914,802	196,698,545
Statutory Surplus	87,811,005	83,095,694
Total Adjusted Capital	87,811,005	83,095,694

	30-Sept.-11			31-Dec-10		
Impact of Tax Planning Strategies:	Ordinary	Capital	Total	Ordinary	Capital	Total
Adjusted Gross DTAs	0.0%	7.3%	7.3%	0.0%	19.7%	19.7%
(% of Total Adjusted Gross DTAs)						
Net Admitted Adjusted Gross DTAs	0.0%	0.0%	0.0%	0.0%	0.0%	0.0%
(% of Total Net Admitted Adjusted Gross DTAs)						

B. Unrecognized DTLs
Not applicable

C. Current Tax and Change in Deferred Tax
The provisions for income taxes incurred on earnings for the periods ended are:

	30-Sept.-11	31-Dec-10
Current federal income tax provision	697,891	1,919,652
Prior year (overaccrual)/underaccrual	(439,641)	264,446
Federal and foreign income taxes incurred	<u>258,250</u>	<u>2,184,098</u>

The tax effect of temporary differences that give rise to significant portions of the deferred tax assets and deferred tax liabilities are as follows:

	30-Sept.-11	31-Dec-10
Deferred Tax Assets		
Unearned premium reserve@ 20%	5,035,032	4,605,819
Discounted loss reserves	525,256	483,707
Capital loss carryover	97,871	
Allowance for Bad Debts	1,237,630	729,231
Unearned Provisional Commission	-	-
Impairment Loss on Investments	<u>439,912</u>	<u>1,425,560</u>
Total deferred tax assets	7,335,702	7,244,318
Nonadmitted deferred tax assets	<u>(639,372)</u>	<u>(1,519,112)</u>
Admitted deferred tax assets	6,696,330	5,725,205
Deferred Tax Liabilities		
	<u>-</u>	<u>-</u>
Total deferred tax liabilities	-	-
Net admitted deferred tax assets	6,696,330	5,725,205

The change in net deferred income taxes is comprised of the following:

	30-Sept.-11	31-Dec-10	Change
Total deferred tax assets	7,335,702	7,244,318	91,384
Total deferred tax liabilities	<u>-</u>	<u>-</u>	<u>-</u>
Net deferred tax asset	7,335,702	7,244,318	91,384
Tax effect of unrealized gains			<u>-</u>
Change in net deferred income tax			91,384

D. Reconciliation of Federal Income Tax Rate to Actual Effective Rate
The significant items causing a difference between the statutory federal income tax rate and the Company's effective income tax rate are as follows:

	30-Sept.-11	Effective Rate
Provision computed at statutory rate	361,231	35.00%

NOTES TO FINANCIAL STATEMENTS

Tax exempt interest	(137,240)	-13.30%
Other permanent differences	(27,516)	-2.67%
State tax	(5,871)	-0.57%
Rate differential		0.00%
Provision to return adjustment	<u>(23,739)</u>	<u>-2.30%</u>
Total	166,866	16.17%

	30-Sept.-11	Effective Rate
Federal and foreign income taxes incurred	258,250	25.02%
Current taxes on realized capital gains	-	0.00%
Change in net deferred income taxes	<u>(91,384)</u>	<u>-8.85%</u>
Total statutory income taxes	166,866	16.17%

E. Operating Loss and Tax Credit Carryforwards
At the end of the year, the Company did not have any unused operating loss carryforwards available to offset against future taxable income.

Income tax expense for 2011 and 2010 in the amounts of \$697,891 and \$1,492,572 are available for recoupment in the event of future losses.

F. Consolidated Federal Income Tax Return

1) The Company's federal income tax return will be consolidated with the following entities:

PGC Holdings Corp. (parent)	The General Automobile Insurance Services, Inc.
Permanent General Companies, Inc.	The General Automobile Insurance Services of Georgia, Inc.
Permanent General Assurance Corporation	The General Automobile Insurance Services of Louisiana, Inc.
PGA Service Corporation	The General Automobile Insurance Services of Ohio, Inc.
The General Automobile Insurance Company, Inc.	The General Automobile Insurance Services of Texas, Inc.

2) The method of allocation between the companies is subject to written agreement, approved by the Board of Directors. Allocation is based upon separate return calculations with current credit for net losses. Intercompany tax balances are settled quarterly.

10. Information Concerning Parent, Subsidiaries Affiliates and Other Related Parties

- A,B,C. In March 2011 PGASC returned capital in the amount of \$1,500,000 to it's parent PGAC. In March 2011 Permanent General Companies, Inc. made a capital contribution of \$700,000 to it's subsidiary PGAC.
- D. At September 30, 2011, the Company reported \$7,002,352 net receivable from it's parent and affiliates. The terms of the settlement require these amounts are settled within 90 days.
- E. The Company has made no guarantees or undertakings for the benefit of the parent or affiliates.
- F. PGAC is a affiliate of PGC Holdings Corp. and as such has a tax agreement in place with this affiliated company. PGAC also has a service agreement in place with its parent Permanent General Companies, Inc (PGC), which is also a wholly owned subsidiary of PGC Holdings Corp. Under this agreement PGC performs administrative services on behalf of PGAC. These services include; claims administration, underwriting, policy issuance and record keeping, legal services, data processing and accounting.
- G. All outstanding shares of the company are owned by the parent company, Permanent General Companies, Inc., a non-insurance holding company domiciled in the State of Tennessee.
- H. The Company wholly owns PGA Service Corporation, an insurance premium finance company domiciled in the State of Tennessee.
- I,J. The Company has no investments in an SCA entity that exceeds 10% of admitted assets.
- K. None.
- L. None.

11. Debt
None.

12. Retirement Plans, Deferred Compensation, Postemployment Benefits and Compensated Absences and Other Postretirement Benefit Plans.
None.

13. Capital and Surplus, Dividend Restrictions and Quasi-Reorganizations
No change.

14. Contingencies

- (A) The company has no contingent commitments to an SCA entity, joint ventures, partnerships, or limited liability companies.
- (B) The company has a guaranty fund asset of \$6,625, which will be offset against premium tax payments thru 2011.
- (C) The company has no gain contingencies.
- (D) Claims related extra contractual obligations and bad faith losses stemming from lawsuits.

The company paid the following amounts in the reporting period to settle claims related extra contractual obligations or bad faith claims stemming from lawsuits.

NOTES TO FINANCIAL STATEMENTS

	Direct
Claim payments made during reporting period	\$19,000

Number of claims where amounts were paid to settle claims resulting from lawsuits during the reporting period.

(A)	(B)	(C)	(D)	(E)
0-25	26-50	51-100	101-500	More than 500 Claims
X				

Indicate whether claim count information is disclosed per claim or claimant.

(F) Per Claim [X] (G) Per Claimant []

(E) All Other Contingencies.

Various lawsuits against the Company have arisen in the course of the Company's business. Contingent liabilities arising from litigation, income taxes and other matters are not considered material in relation to the financial position of the Company.

15. Leases.
None.
16. Information about Financial Instruments with Off-balance Sheet Risk and Financial Instruments with Concentrations of Credit Risk.
None.
17. Sale, Transfer and Servicing of Financial Assets and Extinguishments of Liabilities.
None.
18. Gain or Loss to the Report Entity from Uninsured Plans and the Uninsured Portion of Partially Insured Plans.
None.
19. Direct Premium Written/Produced by MGA/3rd Party Administration
None.
20. Fair Value Measurements.

A. (1) Assets Measured at Fair Value on a Recurring Basis

Description	Quoted Prices in Active Markets for Identical Assets (Level 1)	Significant Other Observable Inputs (Level 2)	Significant Unobservable Inputs (Level 3)	Total @ 09/30/2011
Common Stock	5,268,204			5,268,204
Total	5,268,204	0	0	5,268,204

(2) Assets Measured at Fair Value on a Recurring Basis Using Significant Unobservable Inputs (Level 3)
None.

B. (1) Assets Measured at Fair Value on a Nonrecurring Basis

Description	Total @ 09/30/2011	Quoted Prices in Active Markets for Identical Assets (Level 1)	Significant Other Observable Inputs (Level 2)	Significant Unobservable Inputs (Level 3)	Total Gains (Losses)
Bonds	11,183,268			11,183,268	(2,804,252)
Total	11,183,268	0	0	11,183,268	(2,804,252)

(2-3) The market inputs utilized in the pricing evaluation include benchmark yields, reported trades, broker/dealer quotes, issuer spreads, bids, offers, industry and economic events. The company then makes assumptions for market based inputs that are unavailable due to market conditions for level 3 securities.

- C. Not required
- D. Not applicable.

NOTES TO FINANCIAL STATEMENTS

21. Other Items.

- A. Extraordinary Items
None.
- B. Troubled Debt Restructuring. Debtors
None.
- C. Other Disclosers
None.
- D. The Company routinely assesses the collectibility of premium and agent balances. The uncollectible amounts are not material to the Company's financial condition.
- E. Business Interruption Insurance Recoveries.
None.
- F. State Transferable Tax Credits
None.

G. Subprime Mortgage Related Risk Exposure

(1) Factors used to determine the investment in a specific sub-prime security include the quality of underwriter / loan servicer, types of loans (fixed, floating, hybrid ARM), loan quality (documentation, purpose, occupancy), loan origination year (vintage), loan geographic distribution, average loan to values, average FICO scores and the securities credit support level. Loan loss estimates are computed based on historical loan delinquency and foreclosure statistics and projecting future delinquencies and losses under multiple economic scenarios including various home price changes and employment estimates, as well as servicer style and the foreclosure rules for each state. Total projected losses for all mortgages in each deal are then compared to the credit support (subordination plus over collateralization) to determine the percentage of principal loss expected for each tranche. To minimize specific security risk and concentration risk to the sector, issue limitations and sector limitations as a percentage of the portfolio have been established.

(2) Direct Exposure through investment in subprime mortgage loans.

None.

(3) Direct Exposure through other investments.

Description	Cost	Book adjusted carry value	Fair value	OTTI to date
Other Assets	\$1,076,300	\$562,731	\$562,731	\$897,409

(4) Underwriting exposure to subprime mortgage risk through Mortgage Guaranty or Financial Guaranty insurance coverage.

None.

22. Events Subsequent.

None.

23. Reinsurance

No change.

24. Retrospectively Rated Contracts & Contracts Subject to Redetermination.

None.

25. Change in Incurred Losses and Loss Adjustment Expenses

Loss & lae reserves as of December 31, 2010 were \$43.161 million. As of September 30, 2011, \$33.280 million has been paid for incurred loss & lae expenses attributable to insured events or prior years. Reserves remaining for prior years are now \$13.882 million as a result of re-estimation of unpaid claims and lae expenses. Therefore, there has been a \$4.001 million unfavorable prior year development from 12/31/2010 to 09/30/2011 principally on liability lines of business. \$3.170 million of the reserve development was from accident year 2010 and \$.831 was from accident year 2009 and prior. States entered into since 2005 accounted for \$1.534 million of the total development due to claim severity projected at the end of the second quarter 2011 being higher than was projected at year-end 2010. In older states, Tennessee accounted for \$.354 million of development because of claims severity. Ohio had \$.295 million of development from higher than average projected case reserves. Florida had \$.354 million of adverse development from accident year 2010 due to higher than projected pip frequency and severity. The development is generally the result of an ongoing analysis of recent loss development trends and are increased or decreased as additional information becomes known regarding individual claims. The Company has no retrospectively rated policies that are subject to premium adjustments.

26. Intercompany Pooling Arrangements

Effective January 1, 2010, the Company (lead entity) entered into a reinsurance pooling agreement with PGAC of Ohio (NAIC company code - 22906) and The General Automobile Insurance Company, Inc. (GAIC) (NAIC company code - 13703), both of which are affiliated property and casualty insurance companies incorporated in Ohio. The business includes private passenger auto liability & auto physical damage with PGAC receiving 59%, PGAC-Ohio receiving 33%, & GAIC receiving 8%. This Agreement applies only to that portion of any insurance or reinsurance which the parties hereto retain net for their own account and in calculating the amount of any loss hereunder, only loss or losses in respect of that portion of any insurance or reinsurance which the parties hereto retain net for their own account shall be included. The Company has a net receivable balance of \$1,069,186 at 09/30/2011.

27. Structured Settlements

None.

28. Health Care Receivables

None.

NOTES TO FINANCIAL STATEMENTS

29.

Participating Policies

None.
30.

Premium Deficiency Reserves

1. Liability carried for premium deficiency reserves.

\$0

2. Date of the most recent evaluation of this liability.

09/30/2011

3. Was anticipated investment income utilized in the calculation?

Yes ☐ No ☒
31.

High Deductibles

None.
32.

Discounting of Liabilities for Unpaid Losses or Unpaid Loss Adjustment Expenses

None.
33.

Asbestos/Environmental Reserves

None.
34.

Subscriber Savings accounts

None.
35.

Multi Peril Crop Insurance

None.
36.

Financial Guaranty Insurance

None.

GENERAL INTERROGATORIES

PART 1 - COMMON INTERROGATORIES
GENERAL

- 1.1

Did the reporting entity experience any material transactions requiring the filing of Disclosure of Material Transactions with the State of Domicile, as required by the Model Act?

Yes ☐ No ☒
- 1.2

If yes, has the report been filed with the domiciliary state?

Yes ☐ No ☐
- 2.1

Has any change been made during the year of this statement in the charter, by-laws, articles of incorporation, or deed of settlement of the reporting entity?

Yes ☐ No ☒
- 2.2

If yes, date of change:
3.

Have there been any substantial changes in the organizational chart since the prior quarter end?

Yes ☐ No ☒

If yes, complete the Schedule Y - Part 1 - organizational chart.
- 4.1

Has the reporting entity been a party to a merger or consolidation during the period covered by this statement?

Yes ☐ No ☒
- 4.2

If yes, provide the name of entity, NAIC Company Code, and state of domicile (use two letter state abbreviation) for any entity that has ceased to exist as a result of the merger or consolidation.

1	2	3
Name of Entity	NAIC Company Code	State of Domicile

5.

If the reporting entity is subject to a management agreement, including third-party administrator(s), managing general agent(s), attorney-in-fact, or similar agreement, have there been any significant changes regarding the terms of the agreement or principals involved?

If yes, attach an explanation.

Yes ☐ No ☒ NA ☐
- 6.1

State as of what date the latest financial examination of the reporting entity was made or is being made.

12/31/2009
- 6.2

State the as of date that the latest financial examination report became available from either the state of domicile or the reporting entity. This date should be the date of the examined balance sheet and not the date the report was completed or released.

12/31/2009
- 6.3

State as of what date the latest financial examination report became available to other states or the public from either the state of domicile or the reporting entity. This is the release date or completion date of the examination report and not the date of the examination (balance sheet date).

02/08/2011
- 6.4

By what department or departments?
Ohio Department of Insurance.....
- 6.5

Have all financial statement adjustments within the latest financial examination report been accounted for in a subsequent financial statement filed with Departments?

Yes ☒ No ☐ NA ☐
- 6.6

Have all of the recommendations within the latest financial examination report been complied with?.....

Yes ☒ No ☐ NA ☐
- 7.1

Has this reporting entity had any Certificates of Authority, licenses or registrations (including corporate registration, if applicable) suspended or revoked by any governmental entity during the reporting period?.....

Yes ☐ No ☒
- 7.2

If yes, give full information:
.....
- 8.1

Is the company a subsidiary of a bank holding company regulated by the Federal Reserve Board?.....

Yes ☐ No ☒
- 8.2

If response to 8.1 is yes, please identify the name of the bank holding company.
.....
- 8.3

Is the company affiliated with one or more banks, thrifts or securities firms?.....

Yes ☐ No ☒
- 8.4

If response to 8.3 is yes, please provide below the names and location (city and state of the main office) of any affiliates regulated by a federal regulatory services agency [i.e. the Federal Reserve Board (FRB), the Office of the Comptroller of the Currency (OCC), the Office of Thrift Supervision (OTS), the Federal Deposit Insurance Corporation (FDIC) and the Securities Exchange Commission (SEC)] and identify the affiliate's primary federal regulator.]

1	2	3	4	5	6	7
Affiliate Name	Location (City, State)	FRB	OCC	OTS	FDIC	SEC

GENERAL INTERROGATORIES

- 9.1

Are the senior officers (principal executive officer, principal financial officer, principal accounting officer or controller, or persons performing similar functions) of the reporting entity subject to a code of ethics, which includes the following standards?.....

Yes ☒ No ☐
- (a) Honest and ethical conduct, including the ethical handling of actual or apparent conflicts of interest between personal and professional relationships;

(b) Full, fair, accurate, timely and understandable disclosure in the periodic reports required to be filed by the reporting entity;

(c) Compliance with applicable governmental laws, rules and regulations;

(d) The prompt internal reporting of violations to an appropriate person or persons identified in the code; and

(e) Accountability for adherence to the code.
- 9.11

If the response to 9.1 is No, please explain:

.....
- 9.2

Has the code of ethics for senior managers been amended?.....

Yes ☐ No ☒
- 9.21

If the response to 9.2 is Yes, provide information related to amendment(s).

.....
- 9.3

Have any provisions of the code of ethics been waived for any of the specified officers?.....

Yes ☐ No ☒
- 9.31

If the response to 9.3 is Yes, provide the nature of any waiver(s).

.....

FINANCIAL

- 10.1

Does the reporting entity report any amounts due from parent, subsidiaries or affiliates on Page 2 of this statement?.....

Yes ☒ No ☐
- 10.2

If yes, indicate any amounts receivable from parent included in the Page 2 amount:.....\$

0

INVESTMENT

- 11.1

Were any of the stocks, bonds, or other assets of the reporting entity loaned, placed under option agreement, or otherwise made available for use by another person? (Exclude securities under securities lending agreements.)

Yes ☐ No ☒
- 11.2

If yes, give full and complete information relating thereto:

.....
12.

Amount of real estate and mortgages held in other invested assets in Schedule BA:

\$0
13.

Amount of real estate and mortgages held in short-term investments:

\$0
- 14.1

Does the reporting entity have any investments in parent, subsidiaries and affiliates?

Yes ☒ No ☐
- 14.2

If yes, please complete the following:

		1		2
		Prior Year-End		Current Quarter
		Book/Adjusted		Book/Adjusted
		Carrying Value		Carrying Value
14.21	Bonds	\$	\$	
14.22	Preferred Stock	\$	\$	
14.23	Common Stock	\$1,538,428	\$352,874	
14.24	Short-Term Investments	\$	\$	
14.25	Mortgage Loans on Real Estate	\$	\$	
14.26	All Other	\$	\$	
14.27	Total Investment in Parent, Subsidiaries and Affiliates (Subtotal Lines 14.21 to 14.26).....	\$1,538,428	\$352,874	
14.28	Total Investment in Parent included in Lines 14.21 to 14.26 above	\$	\$	
- 15.1

Has the reporting entity entered into any hedging transactions reported on Schedule DB?

Yes ☐ No ☒
- 15.2

If yes, has a comprehensive description of the hedging program been made available to the domiciliary state?

Yes ☐ No ☐

If no, attach a description with this statement.

GENERAL INTERROGATORIES

16. Excluding items in Schedule E - Part 3 - Special Deposits, real estate, mortgage loans and investments held physically in the reporting entity's offices, vaults or safety deposit boxes, were all stocks, bonds and other securities, owned throughout the current year held pursuant to a custodial agreement with a qualified bank or trust company in accordance with Section 1, III – General Examination Considerations, F. Outsourcing of Critical Functions, Custodial or Safekeeping Agreements of the NAIC Financial Condition Examiners Handbook?.....

Yes ☒ No ☐

16.1 For all agreements that comply with the requirements of the NAIC Financial Condition Examiners Handbook, complete the following:

1 Name of Custodian(s)	2 Custodian Address
Bank of America.....	225 Franklin Street, Boston, Ma. 02110.....

16.2 For all agreements that do not comply with the requirements of the NAIC Financial Condition Examiners Handbook, provide the name, location and a complete explanation:

1 Name(s)	2 Location(s)	3 Complete Explanation(s)

16.3 Have there been any changes, including name changes, in the custodian(s) identified in 16.1 during the current quarter?

Yes ☐ No ☒

16.4 If yes, give full and complete information relating thereto:

1 Old Custodian	2 New Custodian	3 Date of Change	4 Reason

16.5 Identify all investment advisors, broker/dealers or individuals acting on behalf of broker/dealers that have access to the investment accounts, handle securities and have authority to make investments on behalf of the reporting entity:

1 Central Registration Depository	2 Name(s)	3 Address

17.1 Have all the filing requirements of the Purposes and Procedures Manual of the NAIC Securities Valuation Office been followed?

Yes ☒ No ☐

17.2 If no, list exceptions:

.....

GENERAL INTERROGATORIES

(Responses to these interrogatories should be based on changes that have occurred since prior year end unless otherwise noted.)

PART 2

PROPERTY & CASUALTY INTERROGATORIES

1. If the reporting entity is a member of a pooling arrangement, did the agreement or the reporting entity's participation change? Yes [] No [X] NA []

If yes, attach an explanation.

2. Has the reporting entity reinsured any risk with any other reporting entity and agreed to release such entity from liability, in whole or in part, from any loss that may occur on the risk, or portion thereof, reinsured? Yes [] No [X]

If yes, attach an explanation.

3.1 Have any of the reporting entity's primary reinsurance contracts been canceled? Yes [] No [X]

3.2 If yes, give full and complete information thereto.

.....

4.1 Are any of the liabilities for unpaid losses and loss adjustment expenses other than certain workers' compensation tabular reserves (see Annual Statement Instructions pertaining to disclosure of discounting for definition of "tabular reserves,") discounted at a rate of interest greater than zero? Yes [] No [X]

4.2 If yes, complete the following schedule:

			TOTAL DISCOUNT				DISCOUNT TAKEN DURING PERIOD			
1	2	3	4	5	6	7	8	9	10	11
Line of Business	Maximum Interest	Discount Rate	Unpaid Losses	Unpaid LAE	IBNR	TOTAL	Unpaid Losses	Unpaid LAE	IBNR	TOTAL
.....
.....
.....
TOTAL			0	0	0	0	0	0	0	0

5. Operating Percentages:

5.1 A&H loss percent 0.0%

5.2 A&H cost containment percent 0.0%

5.3 A&H expense percent excluding cost containment expenses 0.0%

6.1 Do you act as a custodian for health savings accounts? Yes [] No [X]

6.2 If yes, please provide the amount of custodial funds held as of the reporting date. \$.....

6.3 Do you act as an administrator for health savings accounts? Yes [] No [X]

6.4 If yes, please provide the balance of the funds administered as of the reporting date. \$.....

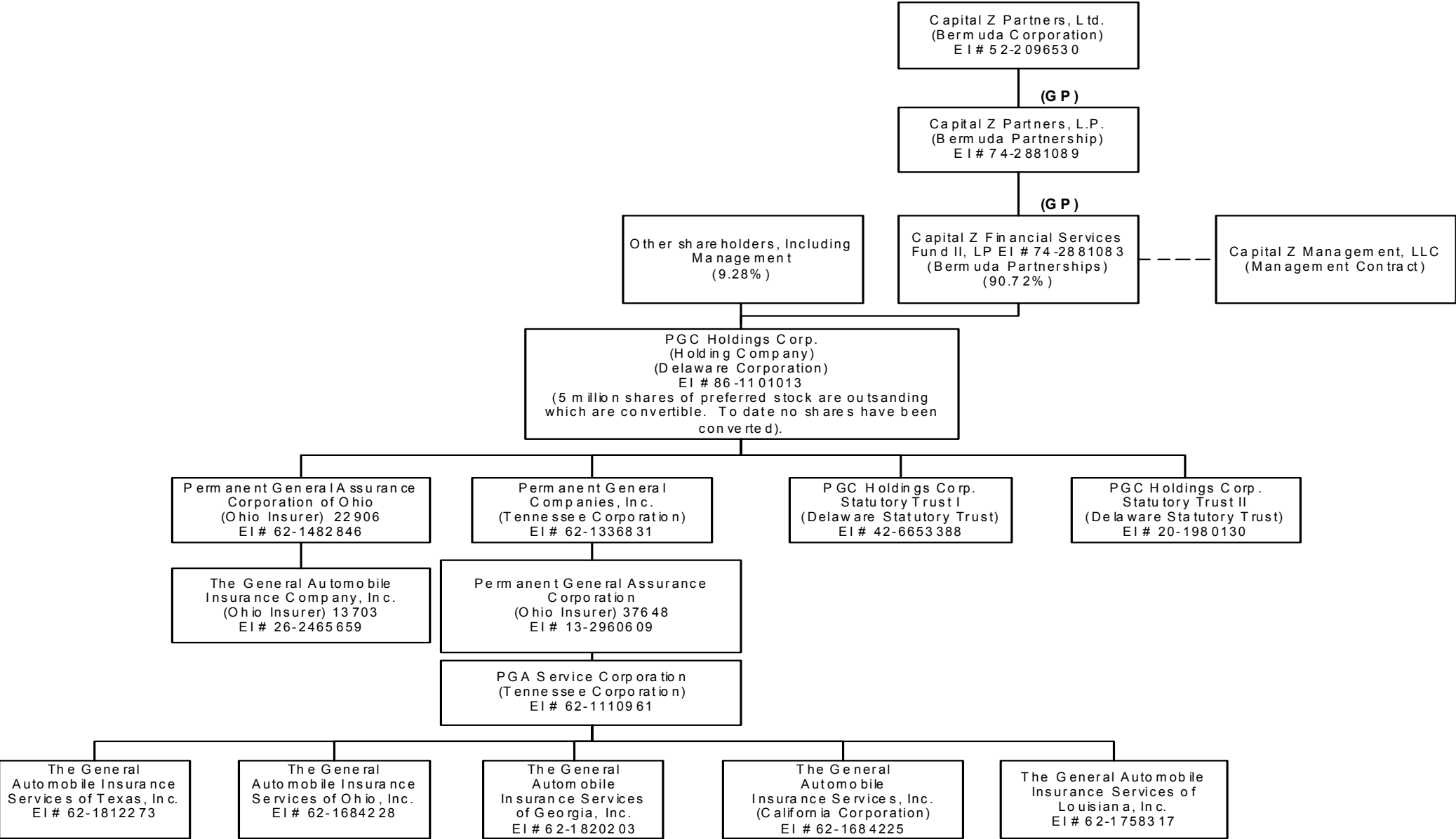
SCHEDULE T - EXHIBIT OF PREMIUMS WRITTEN

Current Year to Date - Allocated by States and Territories								
States, etc.	1	Direct Premiums Written		Direct Losses Paid (Deducting Salvage)		Direct Losses Unpaid		
		2	3	4	5	6	7	
	Active Status	Current Year To Date	Prior Year To Date	Current Year To Date	Prior Year To Date	Current Year To Date	Prior Year To Date	
1. Alabama	AL	L	12,583	0	0	0	0	
2. Alaska	AK	N	0	0	0	0	0	
3. Arizona	AZ	L	8,974,177	9,181,737	5,006,507	4,077,773	2,605,568	
4. Arkansas	AR	N	0	0	0	0	0	
5. California	CA	L	34,103,888	35,526,465	17,145,174	19,002,245	9,038,970	
6. Colorado	CO	L	4,455,914	3,907,448	2,784,814	3,163,225	1,782,066	
7. Connecticut	CT	L	1,346,216	67,779	276,952	0	237,315	
8. Delaware	DE	L	0	0	0	0	0	
9. District of Columbia	DC	N	0	0	0	0	0	
10. Florida	FL	L	19,866,922	17,102,144	12,758,164	10,786,618	6,797,336	
11. Georgia	GA	L	3,918,317	4,014,343	2,770,976	3,056,434	1,546,772	
12. Hawaii	HI	N	0	0	0	0	0	
13. Idaho	ID	L	0	0	0	0	0	
14. Illinois	IL	L	2,884,761	2,571,323	1,549,124	710,632	908,514	
15. Indiana	IN	L	6,751,974	6,238,687	4,201,312	2,606,667	1,836,078	
16. Iowa	IA	L	0	0	0	0	0	
17. Kansas	KS	L	0	0	0	0	0	
18. Kentucky	KY	N	0	0	0	0	2,041	
19. Louisiana	LA	L	4,700,669	5,184,402	3,030,151	2,500,231	1,431,337	
20. Maine	ME	N	0	0	0	0	0	
21. Maryland	MD	N	0	0	0	0	0	
22. Massachusetts	MA	L	0	0	0	0	0	
23. Michigan	MI	N	0	0	0	0	0	
24. Minnesota	MN	N	0	0	0	0	0	
25. Mississippi	MS	L	0	0	433	(245)	0	
26. Missouri	MO	L	3,192,880	2,335,829	1,375,873	489,078	912,446	
27. Montana	MT	L	0	0	0	0	0	
28. Nebraska	NE	L	0	0	0	0	0	
29. Nevada	NV	L	3,705,371	2,995,696	1,515,248	919,192	1,130,653	
30. New Hampshire	NH	N	0	0	0	0	0	
31. New Jersey	NJ	L	0	0	0	0	0	
32. New Mexico	NM	N	0	0	0	0	0	
33. New York	NY	L	9,398,068	8,132,982	6,634,885	3,827,808	4,282,219	
34. No. Carolina	NC	L	0	0	0	0	0	
35. No. Dakota	ND	L	0	0	0	0	0	
36. Ohio	OH	L	3,407,057	4,962,628	3,796,760	7,330,667	1,801,041	
37. Oklahoma	OK	L	0	0	0	0	0	
38. Oregon	OR	L	0	0	0	0	0	
39. Pennsylvania	PA	L	15,661,999	12,298,409	7,257,746	3,460,267	4,228,052	
40. Rhode Island	RI	L	0	0	0	0	0	
41. So. Carolina	SC	L	1,548,019	938,605	712,823	740,958	470,701	
42. So. Dakota	SD	L	0	0	0	0	0	
43. Tennessee	TN	L	10,469,691	6,496,639	4,620,944	3,086,562	2,961,592	
44. Texas	TX	L	2,158,425	961,369	944,353	609,433	767,455	
45. Utah	UT	L	0	0	0	0	0	
46. Vermont	VT	N	0	0	0	0	0	
47. Virginia	VA	L	7,828,271	8,117,095	4,797,592	4,005,817	3,053,892	
48. Washington	WA	L	0	0	0	0	0	
49. West Virginia	WV	L	0	0	0	0	0	
50. Wisconsin	WI	L	0	(27,592)	(9,640)	244,862	42,467	
51. Wyoming	WY	N	0	0	0	0	0	
52. American Samoa	AS	N	0	0	0	0	0	
53. Guam	GU	N	0	0	0	0	0	
54. Puerto Rico	PR	N	0	0	0	0	0	
55. U.S. Virgin Islands	VI	N	0	0	0	0	0	
56. Northern Mariana Islands	MP	N	0	0	0	0	0	
57. Canada	CN	N	0	0	0	0	0	
58. Aggregate Other Alien	OT	XXX	0	0	0	0	0	
59. Totals	(a)	38	144,385,202	131,005,988	81,170,191	70,618,224	45,834,474	
DETAILS OF WRITE-INS								
5801.	XXX							
5802.	XXX							
5803.	XXX							
5898. Summary of remaining write-ins for Line 58 from overflow page	XXX		0	0	0	0	0	
5899. Totals (Lines 5801 through 5803 plus 5898) (Line 58 above)	XXX		0	0	0	0	0	

(L) Licensed or Chartered - Licensed Insurance Carrier or Domiciled RRG; (R) Registered - Non-domiciled RRGs; (Q) Qualified - Qualified or Accredited Reinsurer; (E) Eligible - Reporting Entities eligible or approved to write Surplus Lines in the state; (N) None of the above - Not allowed to write business in the state.

(a) Insert the number of L responses except for Canada and Other Alien.

SCHEDULE Y - INFORMATION CONCERNING ACTIVITIES OF INSURER MEMBERS OF A HOLDING COMPANY GROUP
PART 1 - ORGANIZATIONAL CHART



PART 1 - LOSS EXPERIENCE

Line of Business		Current Year to Date			4 Prior Year to Date Direct Loss Percentage
		1 Direct Premiums Earned	2 Direct Losses Incurred	3 Direct Loss Percentage	
1.	Fire0 0	.0 0
2.	Allied lines0 0	.0 0
3.	Farmowners multiple peril0 0	.0 0
4.	Homeowners multiple peril0 0	.0 0
5.	Commercial multiple peril0 0	.0 0
6.	Mortgage guaranty0 0	.0 0
8.	Ocean marine0 0	.0 0
9.	Inland marine0 0	.0 0
10.	Financial guaranty0 0	.0 0
11.1	Medical professional liability - occurrence0 0	.0 0
11.2	Medical professional liability – claims made0 0	.0 0
12.	Earthquake0 0	.0 0
13.	Group accident and health0 0	.0 0
14.	Credit accident and health0 0	.0 0
15.	Other accident and health0 0	.0 0
16.	Workers' compensation0 0	.0 0
17.1	Other liability occurrence0 0	.0 0
17.2	Other liability – claims made0 0	.0 0
17.3	Excess Workers' Compensation0 0	.0 0
18.1	Products liability - occurrence0 0	.0 0
18.2	Products liability – claims made0 0	.0 0
19.1,19.2	Private passenger auto liability	107,779,513	69,930,865	64.9	64.4
19.3,19.4	Commercial auto liability0 0	.0 0
21.	Auto physical damage	32,054,938	17,498,907	54.6	47.2
22.	Aircraft (all perils)0 0	.0 0
23.	Fidelity0 0	.0 0
24.	Surety0 0	.0 0
26.	Burglary and theft0 0	.0 0
27.	Boiler and machinery0 0	.0 0
28.	Credit0 0	.0 0
29.	International0 0	.0 0
30.	Warranty0 0	.0 0
31.	Reinsurance - Nonproportional Assumed Property	XXX	XXX	XXX	XXX
32.	Reinsurance - Nonproportional Assumed Liability	XXX	XXX	XXX	XXX
33.	Reinsurance - Nonproportional Assumed Financial Lines	XXX	XXX	XXX	XXX
34.	Aggregate write-ins for other lines of business	0	0	.0 0	.0 0
35.	TOTALS	139,834,451	87,429,772	62.5	60.2
DETAILS OF WRITE-INS					
3401.				
3402.				
3403.				
3498.	Sum. of remaining write-ins for Line 34 from overflow page	0	0	.0 0	.0 0
3499.	Totals (Lines 3401 through 3403 plus 3498) (Line 34)	0	0	.0 0	.0 0

PART 2 - DIRECT PREMIUMS WRITTEN

Line of Business		1 Current Quarter	2 Current Year to Date	3 Prior Year Year to Date
1.	Fire	0		0
2.	Allied lines	0		0
3.	Farmowners multiple peril	0		0
4.	Homeowners multiple peril	0		0
5.	Commercial multiple peril	0		0
6.	Mortgage guaranty	0		0
8.	Ocean marine	0		0
9.	Inland marine	0		0
10.	Financial guaranty	0		0
11.1	Medical professional liability - occurrence	0		0
11.2	Medical professional liability – claims made	0		0
12.	Earthquake	0		0
13.	Group accident and health	0		0
14.	Credit accident and health	0		0
15.	Other accident and health	0		0
16.	Workers' compensation	0		0
17.1	Other liability-occurrence	0		0
17.2	Other liability – claims made	0		0
17.3	Excess Workers' Compensation	0		0
18.1	Products liability - occurrence	0		0
18.2	Products liability – claims made	0		0
19.1,19.2	Private passenger auto liability	33,900,765	111,355,437	100,770,548
19.3,19.4	Commercial auto liability	0		0
21.	Auto physical damage	10,079,623	33,029,765	30,235,440
22.	Aircraft (all perils)	0		0
23.	Fidelity	0		0
24.	Surety	0		0
26.	Burglary and theft	0		0
27.	Boiler and machinery	0		0
28.	Credit	0		0
29.	International	0		0
30.	Warranty	0		0
31.	Reinsurance - Nonproportional Assumed Property	XXX	XXX	XXX
32.	Reinsurance - Nonproportional Assumed Liability	XXX	XXX	XXX
33.	Reinsurance - Nonproportional Assumed Financial Lines	XXX	XXX	XXX
34.	Aggregate write-ins for other lines of business	0	0	0
35.	TOTALS	43,980,388	144,385,202	131,005,988
DETAILS OF WRITE-INS				
3401.			
3402.			
3403.			
3498.	Sum. of remaining write-ins for Line 34 from overflow page	0	0	0
3499.	Totals (Lines 3401 through 3403 plus 3498) (Line 34)	0	0	0

PART 3 (000 omitted)

LOSS AND LOSS ADJUSTMENT EXPENSE RESERVES SCHEDULE

	1	2	3	4	5	6	7	8	9	10	11	12	13
Years in Which Losses Occurred	Prior Year-End Known Case Loss and LAE Reserves	Prior Year-End IBNR Loss and LAE Reserves	Total Prior Year-End Loss and LAE Reserves (Cols. 1 + 2)	2011 Loss and LAE Payments on Claims Reported as of Prior Year-End	2011 Loss and LAE Payments on Claims Unreported as of Prior Year-End	Total 2011 Loss and LAE Payments (Cols. 4 + 5)	Q.S. Date Known Case Loss and LAE Reserves on Claims Reported and Open as of Prior Year-End	Q.S. Date Known Case Loss and LAE Reserves on Claims Reported or Reopened Subsequent to Prior Year-End	Q.S. Date IBNR Loss and LAE Reserves	Total Q.S. Loss and LAE Reserves (Cols.7 + 8 + 9)	Prior Year-End Known Case Loss and LAE Reserves Developed (Savings)/ Deficiency (Cols. 4 + 7 minus Col. 1)	Prior Year-End IBNR Loss and LAE Reserves Developed (Savings)/ Deficiency (Cols. 5 + 8 + 9 minus Col. 2)	Prior Year-End Total Loss and LAE Reserve Developed (Savings)/ Deficiency (Cols. 11 + 12)
1. 2008 + Prior	1,824	(87)	1,737	1,521	15	1,536	.896	.8	(439)	465	.593	(329)	.264
2. 2009	4,425	1,144	5,569	3,832	38	3,870	1,782	18	461	2,261	1,189	(627)	.562
3. Subtotals 2009 + prior	6,249	1,057	7,306	5,353	53	5,406	2,678	26	22	2,726	1,782	(956)	.826
4. 2010	24,352	11,503	35,855	27,596	278	27,874	8,435	85	2,636	11,156	11,679	(8,504)	3,175
5. Subtotals 2010 + prior	30,601	12,560	43,161	32,949	331	33,280	11,113	111	2,658	13,882	13,461	(9,460)	4,001
6. 2011	XXX	XXX	XXX	XXX	53,717	53,717	XXX	23,422	12,168	35,590	XXX	XXX	XXX
7. Totals	30,601	12,560	43,161	32,949	54,048	86,997	11,113	23,533	14,826	49,472	13,461	(9,460)	4,001
8. Prior Year-End Surplus As Regards Policy-holders	83,096										Col. 11, Line 7 As % of Col. 1 Line 7	Col. 12, Line 7 As % of Col. 2 Line 7	Col. 13, Line 7 As % of Col. 3 Line 7
											1. 44.0	2. (75.3)	3. 9.3
											Col. 13, Line 7 As a % of Col. 1 Line 8		
											4. 4.8		

SUPPLEMENTAL EXHIBITS AND SCHEDULES INTERROGATORIES

The following supplemental reports are required to be filed as part of your statement filing. However, in the event that your company does not transact the type of business for which the special report must be filed, your response of **NO** to the specific interrogatory will be accepted in lieu of filing on "NONE" report and a bar code will be printed below. If the supplement is required of your company but is not being filed for whatever reason enter **SEE EXPLANATION** and provide an explanation following the interrogatory questions.


	RESPONSE
1. Will the Trusteed Surplus Statement be filed with the state of domicile and the NAIC with this statement?NO.....
2. Will Supplement A to Schedule T (Medical Professional Liability Supplement) be filed with this statement?NO.....
3. Will the Medicare Part D Coverage Supplement be filed with the state of domicile and the NAIC with this statement?NO.....
4. Will the Director and Officer Supplement be filed with the state of domicile and the NAIC with this statement?NO.....

Explanation:

1.
2.
3.
4.


Bar Code:

1.




37648201149000003

2.




37648201145500003

3.



37648201136500003

4.



37648201150500003

OVERFLOW PAGE FOR WRITE-INS

PQ004 Additional Aggregate Lines for Page 04 Line 14.
*STMTINCOME

	1 Current Year to Date	2 Prior Year to Date	3 Prior Year Ended December 31
1404. SUBROGATION FEES.....		41,023	50,481
1497. Summary of remaining write-ins for Line 14 from Page 04	0	41,023	50,481

SCHEDULE A - VERIFICATION

Real Estate

	1	2
	Year to Date	Prior Year Ended December 31
1. Book/adjusted carrying value, December 31 of prior year	0	0
2. Cost of acquired:		
2.1 Actual cost at time of acquisition		0
2.2 Additional investment made after acquisition		0
3. Current year change in encumbrances		0
4. Total gain (loss) on disposals		0
5. Deduct amounts received on disposals		0
6. Total foreign exchange change in book/adjusted carrying value		0
7. Deduct current year's other than temporary impairment recognized		0
8. Deduct current year's depreciation		0
9. Book/adjusted carrying value at the end of current period (Lines 1+2+3+4-5+6-7-8)	0	0
10. Deduct total nonadmitted amounts	0	0
11. Statement value at end of current period (Line 9 minus Line 10)	0	0

SCHEDULE B – VERIFICATION

Mortgage Loans

	1	2
	Year to Date	Prior Year Ended December 31
1. Book value/recorded investment excluding accrued interest, December 31 of prior year	0	0
2. Cost of acquired:		
2.1 Actual cost at time of acquisition		0
2.2 Additional investment made after acquisition		0
3. Capitalized deferred interest and other		0
4. Accrual of discount		0
5. Unrealized valuation increase (decrease)		0
6. Total gain (loss) on disposals		0
7. Deduct amounts received on disposals		0
8. Deduct amortization of premium and mortgage interest points and commitment fees		0
9. Total foreign exchange change in book value/recorded investment excluding accrued interest		0
10. Deduct current year's other than temporary impairment recognized		0
11. Book value/recorded investment excluding accrued interest at end of current period (Lines 1+2+3+4+5+6-7-8+9-10)	0	0
12. Total valuation allowance		0
13. Subtotal (Line 11 plus Line 12)	0	0
14. Deduct total nonadmitted amounts	0	0
15. Statement value at end of current period (Line 13 minus Line 14)	0	0

SCHEDULE BA – VERIFICATION

Other Long-Term Invested Assets

	1	2
	Year To Date	Prior Year Ended December 31
1. Book/adjusted carrying value, December 31 of prior year	0	0
2. Cost of acquired:		
2.1 Actual cost at time of acquisition		0
2.2 Additional investment made after acquisition		0
3. Capitalized deferred interest and other		0
4. Accrual of discount		0
5. Unrealized valuation increase (decrease)		0
6. Total gain (loss) on disposals		0
7. Deduct amounts received on disposals		0
8. Deduct amortization of premium and depreciation		0
9. Total foreign exchange change in book/adjusted carrying value		0
10. Deduct current year's other than temporary impairment recognized		0
11. Book/adjusted carrying value at end of current period (Lines 1+2+3+4+5+6-7-8+9-10)	0	0
12. Deduct total nonadmitted amounts	0	0
13. Statement value at end of current period (Line 11 minus Line 12)	0	0

SCHEDULE D – VERIFICATION

Bonds and Stocks

	1	2
	Year To Date	Prior Year Ended December 31
1. Book/adjusted carrying value of bonds and stocks, December 31 of prior year	112,216,570	117,917,266
2. Cost of bonds and stocks acquired	61,278,484	28,711,519
3. Accrual of discount	132,955	262,370
4. Unrealized valuation increase (decrease)	(1,648,453)	3,101,954
5. Total gain (loss) on disposals	3,377,301	981,896
6. Deduct consideration for bonds and stocks disposed of	49,971,706	36,429,661
7. Deduct amortization of premium	557,821	558,914
8. Total foreign exchange change in book/adjusted carrying value		0
9. Deduct current year's other than temporary impairment recognized		1,769,860
10. Book/adjusted carrying value at end of current period (Lines 1+2+3+4+5-6-7+8-9)	124,827,330	112,216,570
11. Deduct total nonadmitted amounts	352,874	1,538,425
12. Statement value at end of current period (Line 10 minus Line 11)	124,474,456	110,678,145

STATEMENT AS OF SEPTEMBER 30, 2011 OF THE Permanent General Assurance Corporation

SCHEDULE D - PART 1B

Showing the Acquisitions, Dispositions and Non-Trading Activity
During the Current Quarter for all Bonds and Preferred Stock by Rating Class

	1 Book/Adjusted Carrying Value Beginning of Current Quarter	2 Acquisitions During Current Quarter	3 Dispositions During Current Quarter	4 Non-Trading Activity During Current Quarter	5 Book/Adjusted Carrying Value End of First Quarter	6 Book/Adjusted Carrying Value End of Second Quarter	7 Book/Adjusted Carrying Value End of Third Quarter	8 Book/Adjusted Carrying Value December 31 Prior Year
BONDS								
1. Class 1 (a).....	100,708,117	19,151,697	27,094,165	584,236	97,669,304	100,708,117	93,349,885	110,272,953
2. Class 2 (a).....	21,616,974	5,245,882	6,361,098	711,085	21,315,898	21,616,974	21,212,843	15,266,012
3. Class 3 (a).....	4,263,757	5,628,185	0	(2,375,523)	4,880,464	4,263,757	7,516,419	0
4. Class 4 (a).....	0	0	0	0	0	0	0	0
5. Class 5 (a).....	0	0	0	0	0	0	0	0
6. Class 6 (a).....	0	0	0	0	0	0	0	0
7. Total Bonds	126,588,849	30,025,764	33,455,263	(1,080,203)	123,865,666	126,588,849	122,079,147	125,538,965
PREFERRED STOCK								
8. Class 1	0	0	0	0	0	0	0	0
9. Class 2	0	0	0	0	0	0	0	0
10. Class 3	0	0	0	0	0	0	0	0
11. Class 4	0	0	0	0	0	0	0	0
12. Class 5	0	0	0	0	0	0	0	0
13. Class 6	0	0	0	0	0	0	0	0
14. Total Preferred Stock	0	0	0	0	0	0	0	0
15. Total Bonds & Preferred Stock	126,588,849	30,025,764	33,455,263	(1,080,203)	123,865,666	126,588,849	122,079,147	125,538,965

(a) Book/Adjusted Carrying Value column for the end of the current reporting period includes the following amount of non-rated short-term and cash equivalent bonds by NAIC designation: NAIC 1 \$.....0 ; NAIC 2 \$.....0 ; NAIC 3 \$.....0 ; NAIC 4 \$.....0 ; NAIC 5 \$.....0 ; NAIC 6 \$.....0

SCHEDULE DA - PART 1

Short-Term Investments					
	1	2	3	4	5
	Book/Adjusted Carrying Value	Par Value	Actual Cost	Interest Collected Year To Date	Paid for Accrued Interest Year To Date
9199999	2,872,895	XXX	2,872,895	2,127	0

SCHEDULE DA - VERIFICATION

Short-Term Investments		
	1	2
	Year To Date	Prior Year Ended December 31
1. Book/adjusted carrying value, December 31 of prior year.....	14,860,820	4,414,323
2. Cost of short-term investments acquired	23,467,459	35,181,933
3. Accrual of discount.....		0
4. Unrealized valuation increase (decrease).....		0
5. Total gain (loss) on disposals.....		0
6. Deduct consideration received on disposals.....	35,455,384	24,735,436
7. Deduct amortization of premium.....		0
8. Total foreign exchange change in book/adjusted carrying value.....		0
9. Deduct current year's other than temporary impairment recognized.....		0
10. Book/adjusted carrying value at end of current period (Lines 1+2+3+4+5-6-7+8-9).....	2,872,895	14,860,820
11. Deduct total nonadmitted amounts.....		0
12. Statement value at end of current period (Line 10 minus Line 11)	2,872,895	14,860,820

Schedule DB - Part A - Verification

NONE

Schedule DB - Part B- Verification

NONE

Schedule DB - Part C - Section 1

NONE

Schedule DB - Part C - Section 2

NONE

Schedule DB - Verification

NONE

Schedule E Verification

NONE

Schedule A - Part 2

NONE

Schedule A - Part 3

NONE

Schedule B - Part 2

NONE

Schedule B - Part 3

NONE

Schedule BA - Part 2

NONE

Schedule BA - Part 3

NONE

E04

E04

E04

E04

SCHEDULE D - PART 4

Show All Long-Term Bonds and Stock Sold, Redeemed or Otherwise Disposed of by the Company During the Current Quarter

1	2	3	4	5	6	7	8	9	10	Change in Book/Adjusted Carrying Value					16	17	18	19	20	21	22
										11	12	13	14	15							
CUSIP Identification	Description	F o r e i g n	Disposal Date	Name of Purchaser	Number of Shares of Stock	Consideration	Par Value	Actual Cost	Prior Year Book/Adjusted Carrying Value	Unrealized Valuation Increase/ (Decrease)	Current Year's (Amortization)/ Accretion	Current Year's Other Than Temporary Impairment Recognized	Total Change in B/A,C,V (11 + 12 - 13)	Total Foreign Exchange Change in B/A,C,V	Book/ Adjusted Carrying Value at Disposal Date	Foreign Exchange Gain (Loss) on Disposal	Realized Gain (Loss) on Disposal	Total Gain (Loss) on Disposal	Bond Interest/Stock Dividends Received During Year	Maturity Date	NAIC Designation or Market Indicator (a)
36241K-VF-0.	GMIA POOL#782478 5.000% 11/15/38.		09/01/2011.	Paydown.		51,167	51,167	51,583	51,606	.0	(438)	.0	(438)	.0	51,167	.0	.0	.0	1,716	11/15/2038.	1
36290V-RT-3.	GMIA POOL #618898 5.500% 09/15/33.		09/01/2011.	Paydown.		.118	.118	.120	.121	.0	(3)	.0	(3)	.0	.118	.0	.0	.0	.4	09/15/2033.	1FE.
36291G-AF-2.	GMIA POOL #623806 5.500% 11/15/33.		09/01/2011.	Paydown.		3,242	3,242	3,279	3,284	.0	(42)	.0	(42)	.0	3,242	.0	.0	.0	.132	11/15/2033.	1FE.
0599999 - Bonds - U.S. Governments																					XXX
3128NH-W8-2.	FHAM ARM POOL #115171 5.587% 04/01/37.		09/01/2011.	Paydown.		18,907	18,907	19,108	18,999	.0	(92)	.0	(92)	.0	18,907	.0	.0	.0	.707	04/01/2037.	1
312931-E7-9.	FHLC GOLD POOL# A84658 4.500% 02/01/3.		09/01/2011.	Paydown.		97,873	97,873	98,148	98,140	.0	(267)	.0	(267)	.0	97,873	.0	.0	.0	3,020	02/01/2039.	1FE.
312933-WL-5.	FLGC POOL# A86663 4.500% 06/01/39.		09/01/2011.	Paydown.		67,920	67,920	67,899	67,891	.0	.29	.0	.29	.0	67,920	.0	.0	.0	1,955	06/01/2039.	1
312962-VE-0.	FHLC POOL #810613 4.500% 10/01/18.		09/01/2011.	Paydown.		1,207	1,207	1,203	1,206	.0	.1	.0	.1	.0	1,207	.0	.0	.0	.35	10/01/2018.	1FE.
31377U-BK-8.	FMA POOL #387142 5.190% 10/01/14.		09/01/2011.	Paydown.		2,781	2,781	2,886	2,799	.0	(18)	.0	(18)	.0	2,781	.0	.0	.0	.97	10/01/2014.	1FE.
31377U-JH-7.	FMA DUS POOL #387364 (TN) 5.005% 05/		09/01/2011.	Paydown.		4,307	4,307	4,311	4,298	.0	.9	.0	.9	.0	4,307	.0	.0	.0	145	05/01/2015.	1FE.
31387H-R9-3.	FMA POOL # 584712 6.500% 09/01/31.		09/01/2011.	Paydown.		235	235	.246	.252	.0	(17)	.0	(17)	.0	.235	.0	.0	.0	.10	05/01/2031.	1FE.
31391X-S7-5.	FMA POOL #680142 5.000% 01/01/18.		09/01/2011.	Paydown.		1,935	1,935	1,964	1,949	.0	(15)	.0	(15)	.0	1,935	.0	.0	.0	.64	01/01/2018.	1FE.
31392E-40-0.	FNR 2002-72 B 6.500% 11/25/17		09/01/2011.	Paydown.		4,981	4,981	5,280	5,173	.0	(192)	.0	(192)	.0	4,981	.0	.0	.0	.217	09/01/2017.	1FE.
31392F-S8-1.	FNR 2002-82 BE 5.000% 10/25/31.		07/01/2011.	Paydown.		.711	.711	.722	.710	.0	.1	.0	.1	.0	.711	.0	.0	.0	.21	07/01/2011.	1
31395F-NK-6.	FHR 2853 EY 4.500% 09/15/24.		09/01/2011.	Paydown.		67,646	67,646	62,981	64,563	.0	3,083	.0	3,083	.0	67,646	.0	.0	.0	2,117	09/15/2024.	1FE.
31395X-EM-3.	FHR 3021 PC 5.000% 11/15/28.		09/01/2011.	Paydown.		306,852	306,852	306,661	306,319	.0	.533	.0	.533	.0	306,852	.0	.0	.0	10,209	11/15/2028.	1FE.
31397H-S0-1.	FHR 3338 BK 5.000% 10/15/34.		09/01/2011.	Paydown.		75,592	75,592	70,442	73,615	.0	1,976	.0	1,976	.0	75,592	.0	.0	.0	2,543	10/15/2034.	1
31401P-A6-1.	FMA POOL #713829 4.500% 10/01/18.		09/01/2011.	Paydown.		1,919	1,919	1,934	1,932	.0	(12)	.0	(12)	.0	1,919	.0	.0	.0	.58	10/01/2018.	1FE.
31403V-BN-2.	FMA POOL #761545 (TENN) 5.000% 11/01/		09/01/2011.	Paydown.		50,359	50,359	51,351	51,003	.0	(644)	.0	(644)	.0	50,359	.0	.0	.0	1,523	11/01/2019.	1FE.
31405A-3E-1.	FMA POOL #783897 100% TN 5.000% 12/0.		09/01/2011.	Paydown.		8,569	8,569	8,538	8,539	.0	.30	.0	.30	.0	8,569	.0	.0	.0	286	12/01/2034.	1FE.
31405G-XD-6.	FMA POOL #785576 (TENN) 5.000% 11/01/		09/01/2011.	Paydown.		15,819	15,819	16,121	15,981	.0	(162)	.0	(162)	.0	15,819	.0	.0	.0	526	11/01/2019.	1FE.
31405G-XG-9.	FMA POOL #785579 100% TN 5.000% 12/01.		09/01/2011.	Paydown.		12,413	12,413	12,673	12,580	.0	(167)	.0	(167)	.0	12,413	.0	.0	.0	414	12/01/2019.	1FE.
31406B-W6-4.	FMA POOL #605081 100% TN 5.000% 12/0.		09/01/2011.	Paydown.		7,696	7,696	7,835	7,773	.0	(77)	.0	(77)	.0	7,696	.0	.0	.0	257	12/01/2019.	1FE.
31406B-W4-8.	FMA POOL #805111 100% TN 5.500% 12/01.		09/01/2011.	Paydown.		7,642	7,642	7,791	7,741	.0	(99)	.0	(99)	.0	7,642	.0	.0	.0	270	12/01/2034.	1FE.
31413S-HT-4.	FMA POOL #953942 100% TN 6.000% 11/01.		09/01/2011.	Paydown.		125,296	125,296	126,158	126,340	.0	(1,044)	.0	(1,044)	.0	125,296	.0	.0	.0	5,628	11/01/2037.	1
31416N-TU-6.	FMA POOL# AA5062 4.500% 03/01/39.		09/01/2011.	Paydown.		63,501	63,501	63,710	63,655	.0	(154)	.0	(154)	.0	63,501	.0	.0	.0	1,930	03/01/2039.	1FE.
31416P-WC-7.	FMA POOL# AA6042 4.500% 05/01/39.		09/01/2011.	Paydown.		76,832	76,832	77,994	77,850	.0	(1,018)	.0	(1,018)	.0	76,832	.0	.0	.0	2,324	05/01/2039.	1
88045R-DW-1. CALLABLE 01/01/201.			07/01/2011.	Call	100.0000.	25,000	25,000	22,560	22,703	.0	.28	.0	.28	.0	22,730	.0	2,270	2,270	1,250	07/01/2032.	1FE.
3199999 - Total - U.S. Special Revenue and Special Assessments and all Non-Guaranteed Obligations of						1,045,995	1,045,995	1,038,514	1,042,014	.0	1,711	.0	1,711	.0	1,043,726	.0	2,270	2,270	35,607	XXX	XXX
00206R-4P-7.	AT&T 6.7 11/15/2013 6.700% 11/15/13.		09/29/2011.	US BANCORP INTL INC.		1,110,620	1,000,000	1,101,960	1,066,583	.0	(16,778)	.0	(16,778)	.0	1,049,805	.0	60,815	60,815	59,369	11/15/2013.	1FE.
02003W-BQ-6.	ALLSTATE LIFE GLOBAL FUNDING 5.375 04/30.		09/29/2011.	BANK OF NEW YORK.		1,061,750	1,000,000	1,010,880	1,005,500	.0	(1,716)	.0	(1,716)	.0	1,003,785	.0	57,965	57,965	49,868	04/30/2013.	1FE.
03251V-BQ-0.	ANDARCO PETROLEUM CORP 8.7 03/15/2019.		07/11/2011.	MORGAN STANLEY.		1,689,012	1,300,000	1,599,221	.0	.0	(13,698)	.0	(13,698)	.0	1,585,523	.0	103,489	103,489	93,936	03/15/2019.	2
05949A-VT-4.	BOAMS 2004-9 148 5.250% 11/25/34.		08/01/2011.	Paydown.		25,502	25,502	25,685	25,445	.0	.57	.0	.57	.0	25,502	.0	.0	.0	831	08/01/2011.	1

Schedule DB - Part A - Section 1

NONE

Sch. DB - Pt. A - Sn. 1 - Footnote (a)

NONE

Schedule DB - Part B - Section 1

NONE

Sch. DB - Pt. B - Sn. 1 - Footnotes

NONE

Schedule DB - Part D

NONE

Schedule DL - Part 1

NONE

Schedule DL - Part 2

NONE

Schedule E - Part 1

NONE

Schedule E - Part 2 - Cash Equivalents

NONE