



PROPERTY AND CASUALTY COMPANIES - ASSOCIATION EDITION

QUARTERLY STATEMENT

AS OF JUNE 30, 2011

OF THE CONDITION AND AFFAIRS OF THE

Nationwide Property & Casualty Insurance Company

NAIC Group Code 0140 (Current) 0140 (Prior) NAIC Company Code 37877 Employer's ID Number 31-0970750

Organized under the Laws of Ohio, State of Domicile or Port of Entry Ohio

Country of Domicile United States of America

Incorporated/Organized 11/09/1979 Commenced Business 07/01/1981

Statutory Home Office One West Nationwide Blvd. (Street and Number) Columbus, OH 43215-2220 (City or Town, State and Zip Code)

Main Administrative Office One West Nationwide Blvd. (Street and Number) Columbus, OH 43215-2220 (City or Town, State and Zip Code) 614-249-7111 (Area Code) (Telephone Number)

Mail Address One West Nationwide Blvd., 1-04-701 (Street and Number or P.O. Box) Columbus, OH 43215-2220 (City or Town, State and Zip Code)

Primary Location of Books and Records One West Nationwide Blvd., 1-04-701 (Street and Number) Columbus, OH 43215-2220 (City or Town, State and Zip Code) 614-249-1545 (Area Code) (Telephone Number)

Internet Web Site Address www.nationwide.com

Statutory Statement Contact Arlene E. Swanson (Name) 614-249-1545 (Area Code) (Telephone Number) FinRpt@nationwide.com (E-mail Address) 866-315-1430 (FAX Number)

OFFICERS

President Mark Angelo Pizzi Sr VP & Treasurer David Patrick LaPaul

VP & Secretary Robert William Horner III

OTHER

David Gerard Arango Div Pres.-Pres P & C Spec Prod Mark Allen Berven Sr VP - P&C Prod & Pricing Mgmt Pamela Ann Biesecker Sr VP-Head of Taxation

Thomas Williams Dietrich Sr VP-Div Gen Counsel Harry Hansen Hallowell Sr VP Michael Allen Lex Sr VP-Pres NW Nat Partners

DIRECTORS OR TRUSTEES

Wesley Kim Austen Mark Allen Berven Lawrence Allen Hilsheimer

Mark Angelo Pizzi Mark Raymond Thresher #

State of Ohio SS:

County of Franklin

The officers of this reporting entity being duly sworn, each depose and say that they are the described officers of said reporting entity, and that on the reporting period stated above, all of the herein described assets were the absolute property of the said reporting entity, free and clear from any liens or claims thereon, except as herein stated, and that this statement, together with related exhibits, schedules and explanations therein contained, annexed or referred to, is a full and true statement of all the assets and liabilities and of the condition and affairs of the said reporting entity as of the reporting period stated above, and of its income and deductions therefrom for the period ended, and have been completed in accordance with the NAIC Annual Statement Instructions and Accounting Practices and Procedures manual except to the extent that: (1) state law may differ; or, (2) that state rules or regulations require differences in reporting not related to accounting practices and procedures, according to the best of their information, knowledge and belief, respectively. Furthermore, the scope of this attestation by the described officers also includes the related corresponding electronic filing with the NAIC, when required, that is an exact copy (except for formatting differences due to electronic filing) of the enclosed statement. The electronic filing may be requested by various regulators in lieu of or in addition to the enclosed statement.

Mark Angelo Pizzi President Robert William Horner, III VP & Secretary David Patrick LaPaul Sr VP & Treasurer

Subscribed and sworn to before me this July, 2011 day of

a. Is this an original filing? Yes [X] No []

b. If no, 1. State the amendment number..... 2. Date filed 3. Number of pages attached.....

STATEMENT AS OF JUNE 30, 2011 OF THE NATIONWIDE PROPERTY AND CASUALTY INSURANCE COMPANY

ASSETS

	Current Statement Date			4 December 31 Prior Year Net Admitted Assets
	1 Assets	2 Nonadmitted Assets	3 Net Admitted Assets (Cols. 1 - 2)	
1. Bonds	29,908,528		29,908,528	42,143,000
2. Stocks:				
2.1 Preferred stocks				
2.2 Common stocks				
3. Mortgage loans on real estate:				
3.1 First liens				
3.2 Other than first liens.....				
4. Real estate:				
4.1 Properties occupied by the company (less \$				
encumbrances)				
4.2 Properties held for the production of income (less				
\$ encumbrances)				
4.3 Properties held for sale (less \$				
encumbrances)				
5. Cash (\$1,385), cash equivalents				
(\$) and short-term				
investments (\$10,393,363)	10,394,748		10,394,748	2,467,616
6. Contract loans (including \$ premium notes)				
7. Derivatives				
8. Other invested assets	1,221,147		1,221,147	1,451,834
9. Receivables for securities	12,570		12,570	12,556
10. Securities lending reinvested collateral assets				
11. Aggregate write-ins for invested assets				
12. Subtotals, cash and invested assets (Lines 1 to 11)	41,536,993		41,536,993	46,075,006
13. Title plants less \$ charged off (for Title insurers				
only)				
14. Investment income due and accrued	325,533		325,533	540,366
15. Premiums and considerations:				
15.1 Uncollected premiums and agents' balances in the course of collection				
15.2 Deferred premiums, agents' balances and installments booked but				
deferred and not yet due (including \$				
earned but unbilled premiums)				
15.3 Accrued retrospective premiums				
16. Reinsurance:				
16.1 Amounts recoverable from reinsurers	125,493,171		125,493,171	70,771,309
16.2 Funds held by or deposited with reinsured companies	309		309	489
16.3 Other amounts receivable under reinsurance contracts	29,882,449		29,882,449	36,641,285
17. Amounts receivable relating to uninsured plans				
18.1 Current federal and foreign income tax recoverable and interest thereon				
18.2 Net deferred tax asset	1,082,967	868,420	214,547	114,339
19. Guaranty funds receivable or on deposit				
20. Electronic data processing equipment and software				
21. Furniture and equipment, including health care delivery assets				
(\$)				
22. Net adjustment in assets and liabilities due to foreign exchange rates				
23. Receivables from parent, subsidiaries and affiliates	1,553,367	290	1,553,077	8,579,038
24. Health care (\$) and other amounts receivable				
25. Aggregate write-ins for other than invested assets	26,270,348		26,270,348	7,725,403
26. Total assets excluding Separate Accounts, Segregated Accounts and				
Protected Cell Accounts (Lines 12 to 25)	226,145,137	868,710	225,276,427	170,447,235
27. From Separate Accounts, Segregated Accounts and Protected Cell				
Accounts				
28. Total (Lines 26 and 27)	226,145,137	868,710	225,276,427	170,447,235
DETAILS OF WRITE-INS				
1101.				
1102.				
1103.				
1198. Summary of remaining write-ins for Line 11 from overflow page				
1199. Totals (Lines 1101 through 1103 plus 1198)(Line 11 above)				
2501. Miscellaneous assets	26,269,691		26,269,691	7,722,297
2502. Equities and deposits in pools and associations	657		657	3,106
2503.				
2598. Summary of remaining write-ins for Line 25 from overflow page				
2599. Totals (Lines 2501 through 2503 plus 2598)(Line 25 above)	26,270,348		26,270,348	7,725,403

STATEMENT AS OF JUNE 30, 2011 OF THE NATIONWIDE PROPERTY AND CASUALTY INSURANCE COMPANY

LIABILITIES, SURPLUS AND OTHER FUNDS

	1 Current Statement Date	2 December 31, Prior Year
1. Losses (current accident year \$)		
2. Reinsurance payable on paid losses and loss adjustment expenses		
3. Loss adjustment expenses		
4. Commissions payable, contingent commissions and other similar charges		
5. Other expenses (excluding taxes, licenses and fees)		
6. Taxes, licenses and fees (excluding federal and foreign income taxes)		
7.1 Current federal and foreign income taxes (including \$219,415 on realized capital gains (losses))	885,767	337,110
7.2 Net deferred tax liability		
8. Borrowed money \$ and interest thereon \$		
9. Unearned premiums (after deducting unearned premiums for ceded reinsurance of \$608,651,601 and including warranty reserves of \$)		
10. Advance premium		
11. Dividends declared and unpaid:		
11.1 Stockholders		
11.2 Policyholders		
12. Ceded reinsurance premiums payable (net of ceding commissions)	111,815,429	106,075,438
13. Funds held by company under reinsurance treaties		
14. Amounts withheld or retained by company for account of others		
15. Remittances and items not allocated		
16. Provision for reinsurance	305,000	305,000
17. Net adjustments in assets and liabilities due to foreign exchange rates		
18. Drafts outstanding		
19. Payable to parent, subsidiaries and affiliates	49,079,353	10,727,218
20. Derivatives		
21. Payable for securities	8,069,681	
22. Payable for securities lending		
23. Liability for amounts held under uninsured plans		
24. Capital notes \$ and interest thereon \$		
25. Aggregate write-ins for liabilities	3,199,472	1,473,198
26. Total liabilities excluding protected cell liabilities (Lines 1 through 25)	173,354,702	118,917,964
27. Protected cell liabilities		
28. Total liabilities (Lines 26 and 27)	173,354,702	118,917,964
29. Aggregate write-ins for special surplus funds		
30. Common capital stock	3,000,000	3,000,000
31. Preferred capital stock		
32. Aggregate write-ins for other than special surplus funds		
33. Surplus notes		
34. Gross paid in and contributed surplus	24,000,000	24,000,000
35. Unassigned funds (surplus)	24,921,725	24,529,271
36. Less treasury stock, at cost:		
36.1 shares common (value included in Line 30 \$)		
36.2 shares preferred (value included in Line 31 \$)		
37. Surplus as regards policyholders (Lines 29 to 35, less 36)	51,921,725	51,529,271
38. Totals (Page 2, Line 28, Col. 3)	225,276,427	170,447,235
DETAILS OF WRITE-INS		
2501. Escrow liability	9,343	22
2502. State surcharge/recoupment payable	1,727,129	1,473,176
2503. Miscellaneous liabilities	1,463,000	
2598. Summary of remaining write-ins for Line 25 from overflow page		
2599. Totals (Lines 2501 through 2503 plus 2598)(Line 25 above)	3,199,472	1,473,198
2901.		
2902.		
2903.		
2998. Summary of remaining write-ins for Line 29 from overflow page		
2999. Totals (Lines 2901 through 2903 plus 2998)(Line 29 above)		
3201.		
3202.		
3203.		
3298. Summary of remaining write-ins for Line 32 from overflow page		
3299. Totals (Lines 3201 through 3203 plus 3298)(Line 32 above)		

STATEMENT OF INCOME

	1	2	3
	Current Year to Date	Prior Year to Date	Prior Year Ended December 31
UNDERWRITING INCOME			
1. Premiums earned:			
1.1 Direct (written \$ 711,302,379)	719,319,381	711,184,006	1,423,808,168
1.2 Assumed (written \$ 495)	1,183	1,126	2,405
1.3 Ceded (written \$ 711,302,874)	719,320,564	711,185,132	1,423,810,573
1.4 Net (written \$)			
DEDUCTIONS:			
2. Losses incurred (current accident year \$)::			
2.1 Direct	644,527,996	453,606,036	882,435,056
2.2 Assumed	173	896	1,104
2.3 Ceded	644,528,169	453,606,932	882,436,160
2.4 Net			
3. Loss adjustment expenses incurred			
4. Other underwriting expenses incurred			
5. Aggregate write-ins for underwriting deductions			
6. Total underwriting deductions (Lines 2 through 5)			
7. Net income of protected cells			
8. Net underwriting gain or (loss) (Line 1 minus Line 6 + Line 7)			
INVESTMENT INCOME			
9. Net investment income earned	554,277	669,011	1,127,322
10. Net realized capital gains (losses) less capital gains tax of \$ 219,415	441,106	(1,915)	(3,582)
11. Net investment gain (loss) (Lines 9 + 10)	995,383	667,096	1,123,740
OTHER INCOME			
12. Net gain or (loss) from agents' or premium balances charged off (amount recovered \$ amount charged off \$)			
13. Finance and service charges not included in premiums			
14. Aggregate write-ins for miscellaneous income			
15. Total other income (Lines 12 through 14)			
16. Net income before dividends to policyholders, after capital gains tax and before all other federal and foreign income taxes (Lines 8 + 11 + 15)	995,383	667,096	1,123,740
17. Dividends to policyholders			
18. Net income, after dividends to policyholders, after capital gains tax and before all other federal and foreign income taxes (Line 16 minus Line 17)	995,383	667,096	1,123,740
19. Federal and foreign income taxes incurred	670,308	194,779	261,499
20. Net income (Line 18 minus Line 19)(to Line 22)	325,075	472,317	862,241
CAPITAL AND SURPLUS ACCOUNT			
21. Surplus as regards policyholders, December 31 prior year	51,529,271	38,886,155	38,886,155
22. Net income (from Line 20)	325,075	472,317	862,241
23. Net transfers (to) from Protected Cell accounts			
24. Change in net unrealized capital gains (losses) less capital gains tax of \$ (42,441)	9,902	(51,946)	38,004
25. Change in net unrealized foreign exchange capital gain (loss)			
26. Change in net deferred income tax	501,158	5,438	(49,897)
27. Change in nonadmitted assets	(443,681)	5,099	97,768
28. Change in provision for reinsurance			(305,000)
29. Change in surplus notes			
30. Surplus (contributed to) withdrawn from protected cells			
31. Cumulative effect of changes in accounting principles			
32. Capital changes:			
32.1 Paid in			
32.2 Transferred from surplus (Stock Dividend)			
32.3 Transferred to surplus			
33. Surplus adjustments:			
33.1 Paid in		12,000,000	12,000,000
33.2 Transferred to capital (Stock Dividend)			
33.3 Transferred from capital			
34. Net remittances from or (to) Home Office			
35. Dividends to stockholders			
36. Change in treasury stock			
37. Aggregate write-ins for gains and losses in surplus			
38. Change in surplus as regards policyholders (Lines 22 through 37)	392,454	12,430,908	12,643,116
39. Surplus as regards policyholders, as of statement date (Lines 21 plus 38)	51,921,725	51,317,063	51,529,271
DETAILS OF WRITE-INS			
0501.			
0502.			
0503.			
0598. Summary of remaining write-ins for Line 5 from overflow page			
0599. Totals (Lines 0501 through 0503 plus 0598)(Line 5 above)			
1401.			
1402.			
1403.			
1498. Summary of remaining write-ins for Line 14 from overflow page			
1499. Totals (Lines 1401 through 1403 plus 1498)(Line 14 above)			
3701.			
3702.			
3703.			
3798. Summary of remaining write-ins for Line 37 from overflow page			
3799. Totals (Lines 3701 through 3703 plus 3798)(Line 37 above)			

STATEMENT AS OF JUNE 30, 2011 OF THE NATIONWIDE PROPERTY AND CASUALTY INSURANCE COMPANY

CASH FLOW

	1 Current Year To Date	2 Prior Year To Date	3 Prior Year Ended December 31
Cash from Operations			
1. Premiums collected net of reinsurance	5,739,991	12,969,863	773,938
2. Net investment income	903,048	790,174	1,200,068
3. Miscellaneous income	6,759,016	(1,632,349)	(11,291,308)
4. Total (Lines 1 to 3)	13,402,055	12,127,688	(9,317,302)
5. Benefit and loss related payments	54,721,862	4,917,906	(759,463)
6. Net transfers to Separate Accounts, Segregated Accounts and Protected Cell Accounts			
7. Commissions, expenses paid and aggregate write-ins for deductions			
8. Dividends paid to policyholders			
9. Federal and foreign income taxes paid (recovered) net of \$3,503 tax on capital gains (losses)	341,066		157,129
10. Total (Lines 5 through 9)	55,062,928	4,917,906	(602,334)
11. Net cash from operations (Line 4 minus Line 10)	(41,660,873)	7,209,782	(8,714,968)
Cash from Investments			
12. Proceeds from investments sold, matured or repaid:			
12.1 Bonds	20,786,641	1,040,774	1,270,750
12.2 Stocks			
12.3 Mortgage loans			
12.4 Real estate			
12.5 Other invested assets			
12.6 Net gains or (losses) on cash, cash equivalents and short-term investments			
12.7 Miscellaneous proceeds	8,069,663	22,737	22,738
12.8 Total investment proceeds (Lines 12.1 to 12.7)	28,856,304	1,063,511	1,293,488
13. Cost of investments acquired (long-term only):			
13.1 Bonds	8,058,125		18,922,390
13.2 Stocks			
13.3 Mortgage loans			
13.4 Real estate			
13.5 Other invested assets		(541,142)	(541,143)
13.6 Miscellaneous applications			
13.7 Total investments acquired (Lines 13.1 to 13.6)	8,058,125	(541,142)	18,381,247
14. Net increase (or decrease) in contract loans and premium notes			
15. Net cash from investments (Line 12.8 minus Line 13.7 and Line 14)	20,798,179	1,604,653	(17,087,759)
Cash from Financing and Miscellaneous Sources			
16. Cash provided (applied):			
16.1 Surplus notes, capital notes			
16.2 Capital and paid in surplus, less treasury stock		12,000,000	12,000,000
16.3 Borrowed funds			
16.4 Net deposits on deposit-type contracts and other insurance liabilities			
16.5 Dividends to stockholders			
16.6 Other cash provided (applied)	28,789,825	(2,250,955)	11,538,394
17. Net cash from financing and miscellaneous sources (Line 16.1 through Line 16.4 minus Line 16.5 plus Line 16.6)	28,789,825	9,749,045	23,538,394
RECONCILIATION OF CASH, CASH EQUIVALENTS AND SHORT-TERM INVESTMENTS			
18. Net change in cash, cash equivalents and short-term investments (Line 11, plus Lines 15 and 17) ..	7,927,131	18,563,480	(2,264,333)
19. Cash, cash equivalents and short-term investments:			
19.1 Beginning of year	2,467,616	4,731,949	4,731,949
19.2 End of period (Line 18 plus Line 19.1)	10,394,748	23,295,429	2,467,616

Note: Supplemental disclosures of cash flow information for non-cash transactions:

--	--	--	--

NOTES TO FINANCIAL STATEMENTS

Note 1 - Summary of Significant Accounting Policies

No change.

Note 2 - Accounting Changes and Corrections of Errors

No change.

Note 3 - Business Combinations and Goodwill

No change.

Note 4 - Discontinued Operations

No change.

Note 5 - Investments

A. Mortgage Loans

No change.

B. Troubled Debt Restructuring for Creditors

No change.

C. Reverse Mortgages

No change.

D. Loan-Backed Securities

- 1. Prepayment assumptions are generally obtained using a model provided by a third-party vendor.
- 2. Not applicable.
- 3. Not applicable.
- 4. All impaired securities (fair value is less than cost or amortized cost) for which an other-than-temporary impairment has not been recognized in earnings as a realized loss (including securities with a recognized other-than-temporary impairment for non-interest related declines when a non-recognized interest related impairment remains):

a. The aggregate amount of unrealized losses:

1.	Less than 12 Months	\$	(58,125)
2.	12 Months or Longer	\$	-

b. The aggregate related fair value of securities with unrealized losses:

1.	Less than 12 Months	\$	8,000,000
2.	12 Months or Longer	\$	-

- 5. The Company reviews all loan-backed and structured securities in which the fair value of the given security is less than the amortized cost to determine if a given security is other-than-temporarily impaired. The Company examines characteristics of the underlying collateral, such as delinquency and default rates, the quality of the underlying borrower, the type of collateral in the pool, the vintage year of the collateral, subordination levels within the structure of the collateral pool, the quality of any credit guarantors, to determine the cash flows expected to be received for the security.

If the severity and duration of the security's unrealized loss indicates a risk of an other-than-temporary impairment, the Company will evaluate if the amortized cost basis of the security will be recovered by comparing the present value of the cash flows expected to be received for the given security with the amortized cost basis of the security. If the present value of cash flows is greater than the amortized cost basis of a security then the security is deemed not to be other-than-temporarily impaired.

E. Repurchase Agreements

No change.

F. Real Estate

No change.

G. Low-Income Housing Tax Credits

No change.

Note 6 - Joint Ventures, Partnerships and Limited Liability Companies

No change.

Note 7 - Investment Income

No change.

Note 8 - Derivative Instruments

No change.

Note 9 - Income Taxes

No change.

NOTES TO FINANCIAL STATEMENTS

Note 10 - Information Concerning Parent, Subsidiaries, Affiliates and Other Related Parties

Effective January 1, 2011, the Company changed the reinsurance arrangements under which several affiliated companies cede all their direct and assumed business to the pool. See Note 26 for details.

Note 11 - Debt

No change.

Note 12 - Retirement Plans, Deferred Compensation, Postemployment Benefits and Compensated Absences and Other Postretirement Benefit Plans

No change.

Note 13 - Capital and Surplus, Dividend Restrictions and Quasi-Reorganizations

No change.

Note 14 – Contingencies

No change.

Note 15 - Leases

No change.

Note 16 - Information About Financial Instruments With Off-Balance Sheet Risk And Financial Instruments With Concentrations of Credit Risk

No change.

Note 17 - Sale, Transfer and Servicing of Financial Assets and Extinguishments of Liabilities

A. Transfers of Receivables Reported as Sales

No change.

B. Transfers and Servicing of Financial Assets

No change.

C. Wash Sales

Not applicable.

Note 18 - Gain or Loss to the Reporting Entity from Uninsured Plans and the Uninsured Portion of Partially Insured Plans

No change.

Note 19 - Direct Premiums Written/Produced by Managing General Agents/Third Party Administrators

No change.

Note 20 – Fair Value Measurements

Fair value is defined as the price that would be received to sell an asset or paid to transfer a liability in an orderly transaction between market participants at the measurement date. Fair value measurements are based upon observable and unobservable inputs. Observable inputs reflect market data obtained from independent sources while unobservable inputs reflect the Company's view of market assumptions in the absence of observable market information. The Company utilizes valuation techniques that maximize the use of observable inputs and minimize the use of unobservable inputs. In determining fair value, the Company uses various methods including market, income and cost approaches.

The Company categorizes its assets and liabilities measured and reported at fair value in the quarterly statement into a three-level hierarchy based on the priority of the inputs to the valuation technique. The fair value hierarchy gives the highest priority to quoted prices in active markets for identical assets or liabilities (Level 1) and the lowest priority to unobservable inputs (Level 3). If the inputs used to measure fair value fall within different levels of the hierarchy, the category level is based on the lowest priority level input that is significant to the fair value measurement of the instrument in its entirety.

The fair value hierarchy levels are as follows:

Level 1. Unadjusted quoted prices accessible in active markets for identical assets or liabilities at the measurement date.

Level 2. Unadjusted quoted prices for similar assets or liabilities in active markets or inputs (other than quoted prices) that are observable or that are derived principally from or corroborated by observable market data through correlation or other means.

Level 3. Prices or valuation techniques that require inputs that are both unobservable and significant to the overall fair value measurement. Inputs reflect management's best estimate about the assumptions market participants would use at the measurement date in pricing the asset or liability. Consideration is given to the risk inherent in both the method of valuation and the valuation inputs.

The Company periodically reviews its fair value hierarchy classifications for financial assets and liabilities. Changes in observability of significant valuation inputs identified during these reviews may trigger reclassifications. Reclassifications into/out of the fair value hierarchy levels are reported as transfers at the beginning of the period in which the change occurs.

For bonds and marketable stocks for which market quotations are available, the Company generally uses independent pricing services to assist in determining the fair value measurement.

The Company's investments in corporate debt securities, mortgage-backed securities and other asset-backed securities are valued with the assistance of independent pricing services and non-binding broker quotes. The Company's policy is to give priority to pricing obtained from our primary independent pricing service. In the event that pricing information is not available from an independent pricing service, non-binding broker quotes are used to assist in the valuation of the investments. In many cases, only one broker quote is available. The Company's policy is generally not to adjust the values obtained from brokers.

NOTES TO FINANCIAL STATEMENTS

Broker quotes are considered unobservable inputs as only one broker quote is ordinarily obtained, the investment is not traded on an exchange, the pricing is not available to other entities and/or the transaction volume in the same or similar investments has decreased such that generally only one quotation is available. As the brokers often do not provide the necessary transparency into their quotes and methodologies, the Company periodically performs reviews and tests to ensure that quotes are a reasonable estimate of the investments fair value.

For investments valued with the assistance of independent pricing services, the Company obtains the pricing services' methodologies, inputs and assumptions and classifies these investments accordingly in the fair value hierarchy. The Company periodically reviews and tests the pricing and related methodologies obtained from these independent pricing services against secondary sources to ensure that management can validate the investment's fair value and related fair value hierarchy categorization. If large variances are observed between the price obtained from the independent pricing services and secondary sources, the Company analyzes the causes driving the variance.

For certain bonds not priced by independent services (e.g., private placement securities without quoted market prices) a corporate pricing matrix or internally developed pricing model is most often used. The corporate pricing matrix is developed using private spreads for corporate securities with varying weighted average lives and credit quality ratings. The weighted average life and credit quality rating of a bond to be priced using the corporate pricing matrix are important inputs into the model and are used to determine a corresponding spread that is added to the appropriate U.S. Treasury yield to create an estimated market yield for that security. The estimated market yield and other relevant factors are then used to estimate the fair value of the particular bond.

No assets or liabilities were carried at fair value as of June 30, 2011.

Note 21 - Other Items

No change.

Note 22 - Events Subsequent

There were no events occurring subsequent to June 30, 2011 meriting disclosure.

Note 23 - Reinsurance

No change.

Note 24 - Retrospectively Rated Contracts and Contracts Subject to Redetermination

No change.

Note 25 - Changes in Incurred Losses and Loss Adjustment Expenses

No change.

Note 26 - Intercompany Pooling Arrangements

Effective January 1, 2011 the following companies became covered under a pooling reinsurance agreement with Nationwide Mutual Insurance Company (NMIC) whereby NMIC retains 100% of the pool results: Nationwide General Insurance Company (NGIC), Nationwide Property & Casualty Insurance Company (NPCIC), Nationwide Affinity Insurance Company of America (NAICA), Crestbrook Insurance Company (CIC), Atlantic Floridian Insurance Company (AFIC), AMCO Insurance Company (AMCO), Allied Property & Casualty Insurance Company (APCIC), Depositors Insurance Company (DIC), Nationwide Agribusiness Insurance Company (NAIC), Victoria Fire & Casualty Insurance Company (VFCC), Victoria Automobile Insurance Company (VAIC), Victoria Specialty Insurance Company (VSIC), Victoria Select Insurance Company (VSEL), and Victoria National Insurance Company (VNIC). NMIC is the head company in the Nationwide Pool. The companies receiving business from the Nationwide Pool are:

	<u>NAIC #</u>	<u>POOL</u>
Nationwide Mutual Insurance Company	23787	83.7%
Nationwide Mutual Fire Insurance Company	23779	11.3%
Scottsdale Insurance Company	41297	4.0%
Farmland Mutual Insurance Company	13838	1.0%
		<u>100.0%</u>

Note 27 - Structured Settlements

No change.

Note 28 - Health Care Receivables

No change.

Note 29 - Participating Policies

No change.

Note 30 - Premium Deficiency Reserves

No change.

Note 31 - High Deductibles

No change.

Note 32 - Discounting of Liabilities for Unpaid Losses or Unpaid Loss Adjustment Expenses

No change.

Note 33 - Asbestos/Environmental Reserves

No change.

NOTES TO FINANCIAL STATEMENTS

Note 34 - Subscriber Savings Accounts

No change.

Note 35 - Multiple Peril Crop Insurance

No change.

Note 36 – Financial Guaranty Insurance

A. and B. Not applicable.

STATEMENT AS OF JUNE 30, 2011 OF THE NATIONWIDE PROPERTY AND CASUALTY INSURANCE COMPANY

GENERAL INTERROGATORIES

PART 1 - COMMON INTERROGATORIES

GENERAL

- 1.1

Did the reporting entity experience any material transactions requiring the filing of Disclosure of Material Transactions with the State of Domicile, as required by the Model Act?

Yes [X] No []
- 1.2

If yes, has the report been filed with the domiciliary state?

Yes [X] No []
- 2.1

Has any change been made during the year of this statement in the charter, by-laws, articles of incorporation, or deed of settlement of the reporting entity?

Yes [] No [X]
- 2.2

If yes, date of change:
3.

Have there been any substantial changes in the organizational chart since the prior quarter end?

Yes [] No [X]

If yes, complete the Schedule Y - Part 1 - organizational chart.
- 4.1

Has the reporting entity been a party to a merger or consolidation during the period covered by this statement?

Yes [] No [X]
- 4.2

If yes, provide the name of the entity, NAIC Company Code, and state of domicile (use two letter state abbreviation) for any entity that has ceased to exist as a result of the merger or consolidation.

1 Name of Entity	2 NAIC Company Code	3 State of Domicile

5.

If the reporting entity is subject to a management agreement, including third-party administrator(s), managing general agent(s), attorney-in-fact, or similar agreement, have there been any significant changes regarding the terms of the agreement or principals involved?

Yes [] No [X] N/A []

If yes, attach an explanation.
- 6.1

State as of what date the latest financial examination of the reporting entity was made or is being made.

12/31/2011
- 6.2

State the as of date that the latest financial examination report became available from either the state of domicile or the reporting entity. This date should be the date of the examined balance sheet and not the date the report was completed or released.

12/31/2006
- 6.3

State as of what date the latest financial examination report became available to other states or the public from either the state of domicile or the reporting entity. This is the release date or completion date of the examination report and not the date of the examination (balance sheet date).

03/29/2008
- 6.4

By what department or departments?
OH
- 6.5

Have all financial statement adjustments within the latest financial examination report been accounted for in a subsequent financial statement filed with Departments?

Yes [] No [] N/A [X]
- 6.6

Have all of the recommendations within the latest financial examination report been complied with?

Yes [] No [] N/A [X]
- 7.1

Has this reporting entity had any Certificates of Authority, licenses or registrations (including corporate registration, if applicable) suspended or revoked by any governmental entity during the reporting period?

Yes [] No [X]
- 7.2

If yes, give full information:
- 8.1

Is the company a subsidiary of a bank holding company regulated by the Federal Reserve Board?

Yes [] No [X]
- 8.2

If response to 8.1 is yes, please identify the name of the bank holding company.
- 8.3

Is the company affiliated with one or more banks, thrifts or securities firms?

Yes [X] No []
- 8.4

If response to 8.3 is yes, please provide below the names and location (city and state of the main office) of any affiliates regulated by a federal regulatory services agency [i.e. the Federal Reserve Board (FRB), the Office of the Comptroller of the Currency (OCC), the Office of Thrift Supervision (OTS), the Federal Deposit Insurance Corporation (FDIC) and the Securities Exchange Commission (SEC)] and identify the affiliate's primary federal regulator.

1 Affiliate Name	2 Location (City, State)	3 FRB	4 OCC	5 OTS	6 FDIC	7 SEC
Nationwide Bank	Columbus, OH	NO	NO	YES	NO	NO
Nationwide Investment Services Corp.	Columbus, OH	NO	NO	NO	NO	YES
Nationwide Investment Advisors, LLC	Columbus, OH	NO	NO	NO	NO	YES
Nationwide Securities, LLC	Dublin, OH	NO	NO	NO	NO	YES
Nationwide SA Capital Trust	King of Prussia, PA	NO	NO	NO	NO	YES
Nationwide Fund Advisors	King of Prussia, PA	NO	NO	NO	NO	YES
Nationwide Fund Distributors, LLC	King of Prussia, PA	NO	NO	NO	NO	YES
Nationwide Asset Management, LLC	Columbus, OH	NO	NO	NO	NO	YES

STATEMENT AS OF JUNE 30, 2011 OF THE NATIONWIDE PROPERTY AND CASUALTY INSURANCE COMPANY

GENERAL INTERROGATORIES

- 9.1

Are the senior officers (principal executive officer, principal financial officer, principal accounting officer or controller, or persons performing similar functions) of the reporting entity subject to a code of ethics, which includes the following standards?
(a) Honest and ethical conduct, including the ethical handling of actual or apparent conflicts of interest between personal and professional relationships;
(b) Full, fair, accurate, timely and understandable disclosure in the periodic reports required to be filed by the reporting entity;
(c) Compliance with applicable governmental laws, rules and regulations;
(d) The prompt internal reporting of violations to an appropriate person or persons identified in the code; and
(e) Accountability for adherence to the code.

Yes [X] No []
- 9.11

If the response to 9.1 is No, please explain:
- 9.2

Has the code of ethics for senior managers been amended?

Yes [] No [X]
- 9.21

If the response to 9.2 is Yes, provide information related to amendment(s).
- 9.3

Have any provisions of the code of ethics been waived for any of the specified officers?

Yes [] No [X]
- 9.31

If the response to 9.3 is Yes, provide the nature of any waiver(s).

FINANCIAL

- 10.1

Does the reporting entity report any amounts due from parent, subsidiaries or affiliates on Page 2 of this statement?

Yes [X] No []
- 10.2

If yes, indicate any amounts receivable from parent included in the Page 2 amount:

\$

INVESTMENT

- 11.1

Were any of the stocks, bonds, or other assets of the reporting entity loaned, placed under option agreement, or otherwise made available for use by another person? (Exclude securities under securities lending agreements.)

Yes [] No [X]
- 11.2

If yes, give full and complete information relating thereto:
12.

Amount of real estate and mortgages held in other invested assets in Schedule BA:

\$
13.

Amount of real estate and mortgages held in short-term investments:

\$
- 14.1

Does the reporting entity have any investments in parent, subsidiaries and affiliates?

Yes [] No [X]
- 14.2

If yes, please complete the following:
- | | 1 | 2 |
|---|---|--|
| | Prior Year-End
Book/Adjusted
Carrying Value | Current Quarter
Book/Adjusted
Carrying Value |
| 14.21 Bonds | \$ | \$ |
| 14.22 Preferred Stock | \$ | \$ |
| 14.23 Common Stock | \$ | \$ |
| 14.24 Short-Term Investments | \$ | \$ |
| 14.25 Mortgage Loans on Real Estate | \$ | \$ |
| 14.26 All Other | \$ | \$ |
| 14.27 Total Investment in Parent, Subsidiaries and Affiliates (Subtotal Lines 14.21 to 14.26) | \$ | \$ |
| 14.28 Total Investment in Parent included in Lines 14.21 to 14.26 above | \$ | \$ |
- 15.1

Has the reporting entity entered into any hedging transactions reported on Schedule DB?

Yes [] No [X]
- 15.2

If yes, has a comprehensive description of the hedging program been made available to the domiciliary state?

Yes [] No []
- If no, attach a description with this statement.

STATEMENT AS OF JUNE 30, 2011 OF THE NATIONWIDE PROPERTY AND CASUALTY INSURANCE COMPANY

GENERAL INTERROGATORIES

16. Excluding items in Schedule E - Part 3 - Special Deposits, real estate, mortgage loans and investments held physically in the reporting entity's offices, vaults or safety deposit boxes, were all stocks, bonds and other securities, owned throughout the current year held pursuant to a custodial agreement with a qualified bank or trust company in accordance with Section 1, III - General Examination Considerations, F. Outsourcing of Critical Functions, Custodial or Safekeeping Agreements of the NAIC Financial Condition Examiners Handbook? Yes [X] No []
- 16.1 For all agreements that comply with the requirements of the NAIC Financial Condition Examiners Handbook, complete the following:

1 Name of Custodian(s)	2 Custodian Address
The Bank of New York Mellon	1 Wall Street, New York, NY 10286

- 16.2 For all agreements that do not comply with the requirements of the NAIC Financial Condition Examiners Handbook, provide the name, location and a complete explanation:

1 Name(s)	2 Location(s)	3 Complete Explanation(s)

- 16.3 Have there been any changes, including name changes, in the custodian(s) identified in 16.1 during the current quarter? Yes [] No [X]
- 16.4 If yes, give full information relating thereto:

1 Old Custodian	2 New Custodian	3 Date of Change	4 Reason

- 16.5 Identify all investment advisors, brokers/dealers or individuals acting on behalf of broker/dealers that have access to the investment accounts, handle securities and have authority to make investments on behalf of the reporting entity:

1 Central Registration Depository	2 Name(s)	3 Address
N/A	Members of the investment staff designated by the Chief Investment Officer as detailed in the Corporate Resolution.	One Nationwide Blvd., Columbus, OH 43215-2220

- 17.1 Have all the filing requirements of the Purposes and Procedures Manual of the NAIC Securities Valuation Office been followed? Yes [X] No []
- 17.2 If no, list exceptions:

STATEMENT AS OF JUNE 30, 2011 OF THE NATIONWIDE PROPERTY AND CASUALTY INSURANCE COMPANY

GENERAL INTERROGATORIES

PART 2 - PROPERTY & CASUALTY INTERROGATORIES

1.

If the reporting entity is a member of a pooling arrangement, did the agreement or the reporting entity's participation change? Yes [] No [X] N/A []
If yes, attach an explanation.
2.

Has the reporting entity reinsured any risk with any other reporting entity and agreed to release such entity from liability, in whole or in part, from any loss that may occur on the risk, or portion thereof, reinsured? Yes [] No [X]
If yes, attach an explanation.
- 3.1

Have any of the reporting entity's primary reinsurance contracts been canceled? Yes [] No [X]
- 3.2

If yes, give full and complete information thereto.
- 4.1

Are any of the liabilities for unpaid losses and loss adjustment expenses other than certain workers' compensation tabular reserves (see Annual Statement Instructions pertaining to disclosure of discounting for definition of " tabular reserves") discounted at a rate of interest greater than zero? Yes [] No [X]

4.2 If yes, complete the following schedule:

			TOTAL DISCOUNT				DISCOUNT TAKEN DURING PERIOD			
1	2	3	4	5	6	7	8	9	10	11
Line of Business	Maximum Interest	Discount Rate	Unpaid Losses	Unpaid LAE	IBNR	TOTAL	Unpaid Losses	Unpaid LAE	IBNR	TOTAL
TOTAL										

5.

Operating Percentages:

5.1

A&H loss percent0.000 %

5.2

A&H cost containment percent0.000 %

5.3

A&H expense percent excluding cost containment expenses0.000 %
- 6.1

Do you act as a custodian for health savings accounts? Yes [] No [X]
- 6.2

If yes, please provide the amount of custodial funds held as of the reporting date\$.....
- 6.3

Do you act as an administrator for health savings accounts? Yes [] No [X]
- 6.4

If yes, please provide the balance of the funds administered as of the reporting date\$.....

STATEMENT AS OF JUNE 30, 2011 OF THE NATIONWIDE PROPERTY AND CASUALTY INSURANCE COMPANY

SCHEDULE F - CEDED REINSURANCE

Showing All New Reinsurers - Current Year to Date

1 NAIC Company Code	2 Federal ID Number	3 Name of Reinsurer	4 Domiciliary Jurisdiction	5 Is Insurer Authorized? (Yes or No)
		NONE		

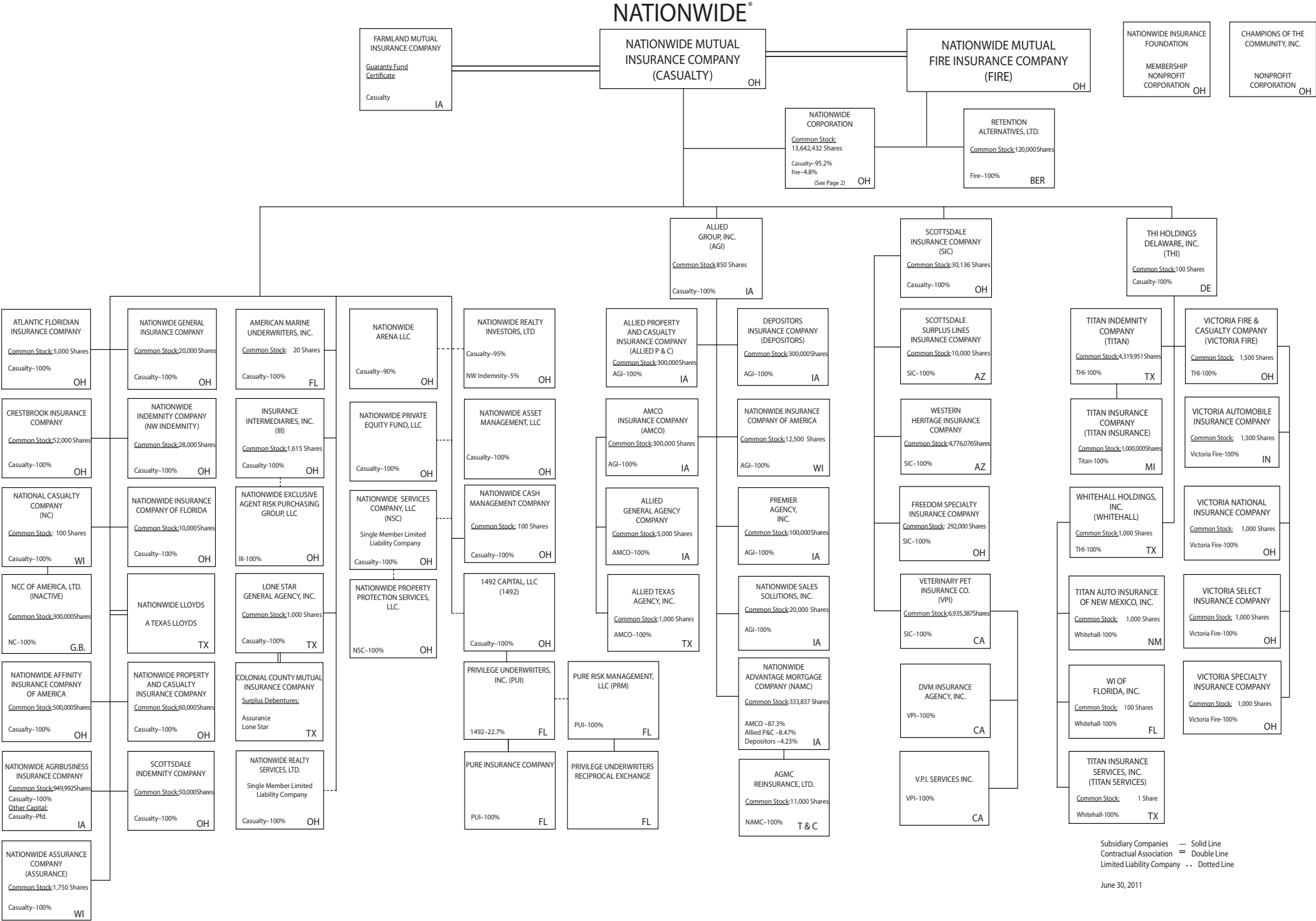
STATEMENT AS OF JUNE 30, 2011 OF THE NATIONWIDE PROPERTY AND CASUALTY INSURANCE COMPANY

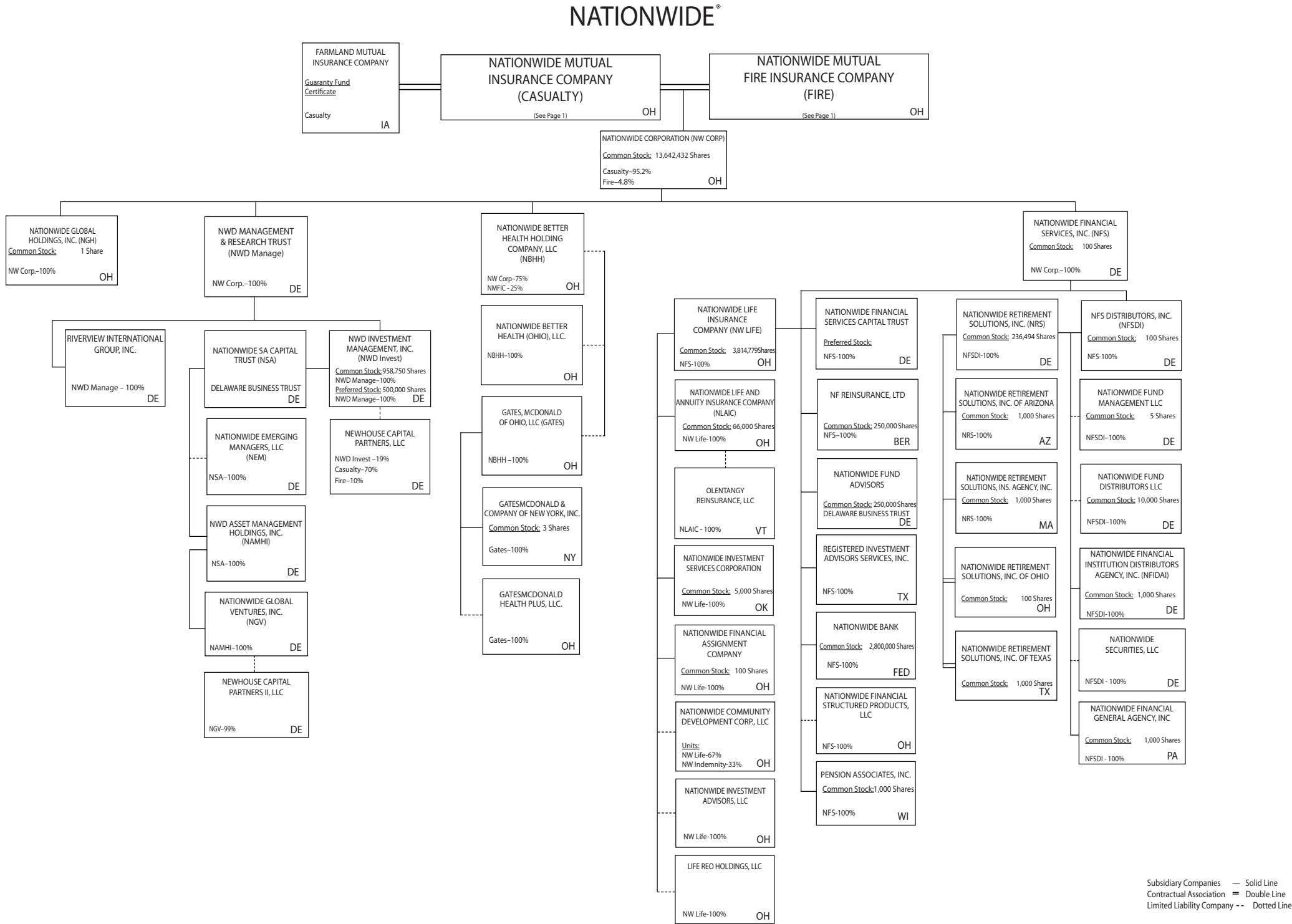
SCHEDULE T - EXHIBIT OF PREMIUMS WRITTEN

Current Year to Date - Allocated by States and Territories							
States, etc.	1 Active Status	Direct Premiums Written		Direct Losses Paid (Deducting Salvage)		Direct Losses Unpaid	
		2 Current Year To Date	3 Prior Year To Date	4 Current Year To Date	5 Prior Year To Date	6 Current Year To Date	7 Prior Year To Date
1. Alabama AL	L	17,083,806	16,944,231	44,606,125	13,156,167	22,419,503	10,258,666
2. Alaska AK	L			(477)	(1,186)	(256)	(459)
3. Arizona AZ	L			(1,626)	(531)	(2,090)	(163)
4. Arkansas AR	L	1,881,654	1,541,719	1,574,675	656,162	3,336,395	2,356,941
5. California CA	L		2	(2,375)	150,122	831,301	867,477
6. Colorado CO	L			(613)	(669)	38,190	23,972
7. Connecticut CT	L	20,115,363	20,549,626	22,716,071	11,290,548	23,290,886	20,221,614
8. Delaware DE	L	8,825,339	9,459,938	5,585,791	6,676,293	7,174,243	7,988,771
9. District of Columbia DC	L	267,540	254,569	123,646	48,260	758,330	224,218
10. Florida FL	L	2,604,874	4,050,187	5,615,820	1,746,379	10,638,247	11,528,719
11. Georgia GA	L	52,566,502	52,000,539	39,584,966	35,305,771	32,752,184	27,985,068
12. Hawaii HI	N						
13. Idaho ID	L			(312)	499,880		5
14. Illinois IL	L	2,739,669	2,566,449	2,077,760	1,798,795	5,246,252	7,208,633
15. Indiana IN	L	1,777,073	1,966,120	1,689,903	1,183,451	1,967,416	2,039,002
16. Iowa IA	L			98		14,438	13,577
17. Kansas KS	L					15,546	7,806
18. Kentucky KY	L	9,007,740	1,734,283	4,159,720	1,182,677	6,116,596	3,642,491
19. Louisiana LA	N					(121)	(55)
20. Maine ME	L	192,762	143,361	57,448	148,051	105,220	120,764
21. Maryland MD	L	25,287,049	23,842,836	10,738,613	16,114,965	24,215,441	22,648,291
22. Massachusetts MA	L					1,489	1,113
23. Michigan MI	L	5,935,911	6,091,309	4,215,710	4,072,547	16,962,675	18,627,187
24. Minnesota MN	L					1,333	455
25. Mississippi MS	L	41,028,655	35,986,748	24,692,237	24,174,257	30,202,722	25,657,306
26. Missouri MO	L		117	6,066	6,067	373,382	65,606
27. Montana MT	L			46	(2,421)	(206)	57
28. Nebraska NE	L					12,036	350
29. Nevada NV	L					(208)	(489)
30. New Hampshire NH	L	2,438,424	2,610,509	1,497,751	2,118,204	1,924,349	1,935,492
31. New Jersey NJ	N						
32. New Mexico NM	L					436	125
33. New York NY	L	30,560,065	28,696,432	16,427,729	13,689,728	32,498,021	28,452,775
34. North Carolina NC	L	126,481,378	147,588,288	90,262,637	87,795,605	97,452,090	105,231,675
35. North Dakota ND	L					(19)	(38)
36. Ohio OH	L	66,339,648	67,056,809	54,733,918	51,751,096	55,193,027	42,430,608
37. Oklahoma OK	L	221,099	127,359	82,968	80,812	152,583	117,641
38. Oregon OR	L				(8,161)	45,963	34,840
39. Pennsylvania PA	L	68,304,067	65,225,322	49,735,486	45,425,016	73,105,660	77,095,664
40. Rhode Island RI	L	6,646,956	6,946,599	4,928,138	5,631,343	5,568,298	5,165,107
41. South Carolina SC	L	26,422,110	29,972,937	31,945,524	14,361,495	25,866,411	14,248,612
42. South Dakota SD	L					(16)	(15)
43. Tennessee TN	L	41,674,911	37,195,104	50,051,773	26,905,570	36,988,618	22,218,310
44. Texas TX	L	67,218,441	69,110,165	45,045,037	39,634,044	63,903,383	40,703,002
45. Utah UT	L				(2,360)	5,543	4,551
46. Vermont VT	L	2,322,035	2,407,212	1,961,503	1,577,508	1,950,577	1,760,208
47. Virginia VA	L	60,579,373	46,704,588	27,584,771	20,436,897	29,493,682	22,295,424
48. Washington WA	L			(3,901)	(5,028)	96,547	297,505
49. West Virginia WV	L	22,779,935	22,541,216	19,393,474	24,305,239	15,570,261	16,750,301
50. Wisconsin WI	L					278	33
51. Wyoming WY	N						
52. American Samoa AS	N						
53. Guam GU	N						
54. Puerto Rico PR	N						
55. U.S. Virgin Islands VI	N						
56. Northern Mariana Islands MP	N						
57. Canada CN	N						
58. Aggregate Other Alien OT	XXX						
59. Totals	(a) 47	711,302,379	703,314,572	561,086,100	451,902,593	626,286,636	540,228,740
DETAILS OF WRITE-INS							
5801.	XXX						
5802.	XXX						
5803.	XXX						
5898. Summary of remaining write-ins for Line 58 from overflow page	XXX						
5899. Totals (Lines 5801 through 5803 plus 5898)(Line 58 above)	XXX						

(L) Licensed or Chartered - Licensed Insurance Carrier or Domiciled RRG; (R) Registered - Non-domiciled RRGs; (Q) Qualified - Qualified or Accredited Reinsurer; (E) Eligible - Reporting Entities eligible or approved to write Surplus Lines in the state; (N) None of the above - Not allowed to write business in the state.

(a) Insert the number of L responses except for Canada and Other Alien.





NATIONWIDE INSURANCE COMPANIES

STATEMENT AS OF JUNE 30, 2011 OF THE NATIONWIDE PROPERTY AND CASUALTY INSURANCE COMPANY

NAIC Group Code	Group Name	NAIC Company Code	State of Domicile	Federal ID Number	Name of Company
0140	Nationwide	42579	IA	42-1201931	Allied Property and Casualty Insurance Company
0140	Nationwide	19100	IA	42-6054959	AMCO Insurance Company
0140	Nationwide	10127	OH	27-0114983	Atlantic Floridian Insurance Company
0140	Nationwide	22209	OH	75-6013587	Freedom Specialty Insurance Company
0140	Nationwide	29262	TX	74-1061659	Colonial County Mutual Insurance Company
0140	Nationwide	18961	OH	68-0066866	Crestbrook Insurance Company
0140	Nationwide	42587	IA	42-1207150	Depositors Insurance Company
0140	Nationwide	13838	IA	42-0618271	Farmland Mutual Insurance Company
0140	Nationwide	11991	WI	38-0865250	National Casualty Company
0140	Nationwide	26093	OH	48-0470690	Nationwide Affinity Insurance Company of America
0140	Nationwide	28223	IA	42-1015537	Nationwide Agribusiness Insurance Company
0140	Nationwide	10723	WI	95-0639970	Nationwide Assurance Company
0140	Nationwide	23760	OH	31-4425763	Nationwide General Insurance Company
0140	Nationwide	10070	OH	31-1399201	Nationwide Indemnity Company
0140	Nationwide	25453	WI	95-2130882	Nationwide Insurance Company of America
0140	Nationwide	10948	OH	31-1613686	Nationwide Insurance Company of Florida
0140	Nationwide	92657	OH	31-1000740	Nationwide Life and Annuity Insurance Company
0140	Nationwide	66869	OH	31-4156830	Nationwide Life Insurance Company
0140	Nationwide	42110	TX	75-1780981	Nationwide Lloyds
0140	Nationwide	23779	OH	31-4177110	Nationwide Mutual Fire Insurance Company
0140	Nationwide	23787	OH	31-4177100	Nationwide Mutual Insurance Company
0140	Nationwide	37877	OH	31-0970750	Nationwide Property & Casualty Insurance Company
0140	Nationwide	15580	OH	31-1117969	Scottsdale Indemnity Company
0140	Nationwide	41297	OH	31-1024978	Scottsdale Insurance Company
0140	Nationwide	10672	AZ	86-0835870	Scottsdale Surplus Lines Insurance Company
0140	Nationwide	13242	TX	74-2286759	Titan Indemnity Company
0140	Nationwide	36269	MI	86-0619597	Titan Insurance Company
0140	Nationwide	42285	CA	95-3750113	Veterinary Pet Insurance Company
0140	Nationwide	10644	IN	34-1785903	Victoria Automobile Insurance Company
0140	Nationwide	42889	OH	34-1394913	Victoria Fire & Casualty Company
0140	Nationwide	10778	OH	34-1842604	Victoria National Insurance Company
0140	Nationwide	10105	OH	34-1777972	Victoria Select Insurance Company
0140	Nationwide	10777	OH	34-1842602	Victoria Specialty Insurance Company
0140	Nationwide	37150	AZ	86-0561941	Western Heritage Insurance Company
0140	Nationwide	13999	VT	27-1712056	Olentangy Reinsurance, LLC
4664	PURE	13204	FL	26-3109178	PURE Insurance Company
4664	PURE	12873	FL	20-8287105	Privilege Underwriters Reciprocal Exchange

PART 1 - LOSS EXPERIENCE

Line of Business		Current Year to Date			4 Prior Year to Date Direct Loss Percentage
		1 Direct Premiums Earned	2 Direct Losses Incurred	3 Direct Loss Percentage	
1.	Fire	935,691	294,089	31.4	81.0
2.	Allied Lines	1,058,845	2,336,021	220.6	50.6
3.	Farmowners multiple peril				
4.	Homeowners multiple peril	370,580,420	401,555,963	108.4	69.3
5.	Commercial multiple peril	67,096,322	74,806,190	111.5	79.6
6.	Mortgage guaranty				
8.	Ocean marine				
9.	Inland marine	8,953,705	3,953,363	44.2	42.0
10.	Financial guaranty				
11.1	Medical professional liability - occurrence		5		
11.2	Medical professional liability - claims-made				
12.	Earthquake	3,266,267	959,792	29.4	3.7
13.	Group accident and health				
14.	Credit accident and health				
15.	Other accident and health				
16.	Workers' compensation	8,089,726	2,262,672	28.0	31.3
17.1	Other liability - occurrence	4,611,776	1,199,763	26.0	20.4
17.2	Other liability - claims-made		9		
17.3	Excess workers' compensation				
18.1	Products liability - occurrence	837,594	250,803	29.9	33.9
18.2	Products liability - claims-made		(1)		
19.1,19.2	Private passenger auto liability	130,780,749	80,247,622	61.4	58.1
19.3,19.4	Commercial auto liability	13,900,331	6,368,471	45.8	47.6
21.	Auto physical damage	106,810,263	68,924,572	64.5	53.4
22.	Aircraft (all perils)				
23.	Fidelity	463	(108)	(23.3)	21.9
24.	Surety				
26.	Burglary and theft	3,014	(5)	(0.2)	1.6
27.	Boiler and machinery	2,394,215	1,368,775	57.2	39.5
28.	Credit				
29.	International				
30.	Warranty				
31.	Reinsurance - Nonproportional Assumed Property	XXX	XXX	XXX	XXX
32.	Reinsurance - Nonproportional Assumed Liability	XXX	XXX	XXX	XXX
33.	Reinsurance - Nonproportional Assumed Financial Lines	XXX	XXX	XXX	XXX
34.	Aggregate write-ins for other lines of business				
35.	Totals	719,319,381	644,527,996	89.6	63.8
DETAILS OF WRITE-INS					
3401.				
3402.				
3403.				
3498.	Summary of remaining write-ins for Line 34 from overflow page				
3499.	Totals (Lines 3401 through 3403 plus 3498)(Line 34 above)				

PART 2 - DIRECT PREMIUMS WRITTEN

Line of Business		1 Current Quarter	2 Current Year to Date	3 Prior Year Year to Date
1.	Fire	460,437	934,088	861,295
2.	Allied Lines	506,283	1,049,757	934,311
3.	Farmowners multiple peril			
4.	Homeowners multiple peril	201,650,720	353,695,824	345,157,711
5.	Commercial multiple peril	36,159,490	69,902,553	67,481,903
6.	Mortgage guaranty			
8.	Ocean marine			
9.	Inland marine	6,922,068	10,260,154	10,437,762
10.	Financial guaranty			
11.1	Medical professional liability - occurrence			
11.2	Medical professional liability - claims-made			
12.	Earthquake	1,936,266	3,202,686	3,401,965
13.	Group accident and health			
14.	Credit accident and health			
15.	Other accident and health			
16.	Workers' compensation	4,455,306	9,126,696	7,122,056
17.1	Other liability - occurrence	3,659,935	5,636,116	5,274,175
17.2	Other liability - claims-made			
17.3	Excess workers' compensation			
18.1	Products liability - occurrence	321,469	814,105	996,810
18.2	Products liability - claims-made			
19.1,19.2	Private passenger auto liability	62,711,020	131,726,231	134,782,178
19.3,19.4	Commercial auto liability	7,855,104	15,514,576	14,138,045
21.	Auto physical damage	51,015,259	107,003,241	110,385,429
22.	Aircraft (all perils)			
23.	Fidelity		759	1,001
24.	Surety			
26.	Burglary and theft	1,521	3,558	4,592
27.	Boiler and machinery	1,281,384	2,432,035	2,335,338
28.	Credit			
29.	International			
30.	Warranty			
31.	Reinsurance - Nonproportional Assumed Property	XXX	XXX	XXX
32.	Reinsurance - Nonproportional Assumed Liability	XXX	XXX	XXX
33.	Reinsurance - Nonproportional Assumed Financial Lines	XXX	XXX	XXX
34.	Aggregate write-ins for other lines of business			
35.	Totals	378,936,262	711,302,379	703,314,572
DETAILS OF WRITE-INS				
3401.			
3402.			
3403.			
3498.	Summary of remaining write-ins for Line 34 from overflow page			
3499.	Totals (Lines 3401 through 3403 plus 3498)(Line 34 above)			

STATEMENT AS OF JUNE 30, 2011 OF THE NATIONWIDE PROPERTY AND CASUALTY INSURANCE COMPANY

PART 3 (000 omitted)

LOSS AND LOSS ADJUSTMENT EXPENSE RESERVES SCHEDULE

	1	2	3	4	5	6	7	8	9	10	11	12	13
Years in Which Losses Occurred	Prior Year-End Known Case Loss and LAE Reserves	Prior Year- End IBNR Loss and LAE Reserves	Total Prior Year-End Loss and LAE Reserves (Cols. 1+2)	2011 Loss and LAE Payments on Claims Reported as of Prior Year-End	2011 Loss and LAE Payments on Claims Unreported as of Prior Year-End	Total 2011 Loss and LAE Payments (Cols. 4+5)	Q.S. Date Known Case Loss and LAE Reserves on Claims Reported and Open as of Prior Year End	Q.S. Date Known Case Loss and LAE Reserves on Claims Reported or Reopened Subsequent to Prior Year End	Q.S. Date IBNR Loss and LAE Reserves	Total Q.S. Loss and LAE Reserves (Cols.7+8+9)	Prior Year-End Known Case Loss and LAE Reserves Developed (Savings)/ Deficiency (Cols.4+7 minus Col. 1)	Prior Year-End IBNR Loss and LAE Reserves Developed (Savings)/ Deficiency (Cols. 5+8+9 minus Col. 2)	Prior Year-End Total Loss and LAE Reserve Developed (Savings)/ Deficiency (Cols. 11+12)
1. 2008 + Prior													
2. 2009													
3. Subtotals 2009 + Prior													
4. 2010													
5. Subtotals 2010 + Prior													
6. 2011XXX	.XXX	.XXX	.XXX			.XXX				.XXX	.XXX	.XXX
7. Totals													
8. Prior Year-End Surplus As Regards Policyholders											Col. 11, Line 7 As % of Col. 1 Line 7	Col. 12, Line 7 As % of Col. 2 Line 7	Col. 13, Line 7 As % of Col. 3 Line 7
											1.	2.	3.
													Col. 13, Line 7 As a % of Col. 1 Line 8
													4.

STATEMENT AS OF JUNE 30, 2011 OF THE NATIONWIDE PROPERTY AND CASUALTY INSURANCE COMPANY

SUPPLEMENTAL EXHIBITS AND SCHEDULES INTERROGATORIES

The following supplemental reports are required to be filed as part of your statement filing. However, in the event that your company does not transact the type of business for which the special report must be filed, your response of NO to the specific interrogatory will be accepted in lieu of filing a "NONE" report and a bar code will be printed below. If the supplement is required of your company but is not being filed for whatever reason enter SEE EXPLANATION and provide an explanation following the interrogatory questions.

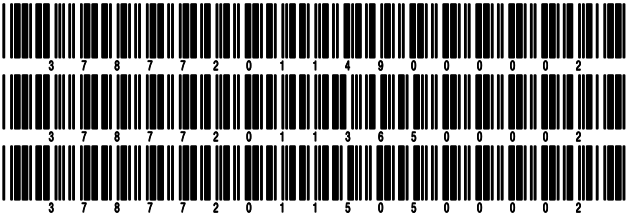
	Response
1. Will the Trusteed Surplus Statement be filed with the state of domicile and the NAIC with this statement?	NO
2. Will Supplement A to Schedule T (Medical Professional Liability Supplement) be filed with this statement?	YES
3. Will the Medicare Part D Coverage Supplement be filed with the state of domicile and the NAIC with this statement?	NO
4. Will the Director and Officer Supplement be filed with the state of domicile and the NAIC with this statement?	NO

Explanations:

1.
3.
4.

Bar Codes:

1. Trusteed Surplus Statement [Document Identifier 490]
3. Medicare Part D Coverage Supplement [Document Identifier 365]
4. Director and Officer Supplement [Document Identifier 505]



NONE

SCHEDULE A - VERIFICATION

Real Estate

	1 Year to Date	2 Prior Year Ended December 31
1. Book/adjusted carrying value, December 31 of prior year		
2. Cost of acquired:		
2.1 Actual cost at time of acquisition		
2.2 Additional investment made after acquisition		
3. Current year change in encumbrances		
4. Total gain (loss) on disposals		
5. Deduct amounts received on disposals		
6. Total foreign exchange change in book/adjusted carrying value		
7. Deduct current year's other than temporary impairment recognized		
8. Deduct current year's depreciation		
9. Book/adjusted carrying value at the end of current period (Lines 1+2+3+4-5+6-7-8)		
10. Deduct total nonadmitted amounts		
11. Statement value at end of current period (Line 9 minus Line 10)		

SCHEDULE B - VERIFICATION

Mortgage Loans

	1 Year to Date	2 Prior Year Ended December 31
1. Book value/recorded investment excluding accrued interest, December 31 of prior year		
2. Cost of acquired:		
2.1 Actual cost at time of acquisition		
2.2 Additional investment made after acquisition		
3. Capitalized deferred interest and other		
4. Accrual of discount		
5. Unrealized valuation increase (decrease)		
6. Total gain (loss) on disposals		
7. Deduct amounts received on disposals		
8. Deduct amortization of premium and mortgage interest points and commitment fees		
9. Total foreign exchange change in book value/recorded investment excluding accrued interest		
10. Deduct current year's other than temporary impairment recognized		
11. Book value/recorded investment excluding accrued interest at end of current period (Lines 1+2+3+4+5+6-7-8+9-10)		
12. Total valuation allowance		
13. Subtotal (Line 11 plus Line 12)		
14. Deduct total nonadmitted amounts		
15. Statement value at end of current period (Line 13 minus Line 14)		

SCHEDULE BA - VERIFICATION

Other Long-Term Invested Assets

	1 Year to Date	2 Prior Year Ended December 31
1. Book/adjusted carrying value, December 31 of prior year	1,451,835	2,555,561
2. Cost of acquired:		
2.1 Actual cost at time of acquisition		
2.2 Additional investment made after acquisition		(541,142)
3. Capitalized deferred interest and other	(230,688)	(562,584)
4. Accrual of discount		
5. Unrealized valuation increase (decrease)		
6. Total gain (loss) on disposals		
7. Deduct amounts received on disposals		
8. Deduct amortization of premium and depreciation		
9. Total foreign exchange change in book/adjusted carrying value		
10. Deduct current year's other than temporary impairment recognized		
11. Book/adjusted carrying value at end of current period (Lines 1+2+3+4+5+6-7-8+9-10)	1,221,147	1,451,835
12. Deduct total nonadmitted amounts		
13. Statement value at end of current period (Line 11 minus Line 12)	1,221,147	1,451,835

SCHEDULE D - VERIFICATION

Bonds and Stocks

	1 Year to Date	2 Prior Year Ended December 31
1. Book/adjusted carrying value of bonds and stocks, December 31 of prior year	42,143,001	24,769,152
2. Cost of bonds and stocks acquired	8,058,125	18,922,390
3. Accrual of discount	668	6,345
4. Unrealized valuation increase (decrease)	(32,539)	88,719
5. Total gain (loss) on disposals	660,521	
6. Deduct consideration for bonds and stocks disposed of	20,786,640	1,270,750
7. Deduct amortization of premium	134,606	372,855
8. Total foreign exchange change in book/adjusted carrying value		
9. Deduct current year's other than temporary impairment recognized		
10. Book/adjusted carrying value at end of current period (Lines 1+2+3+4+5-6-7+8-9)	29,908,530	42,143,001
11. Deduct total nonadmitted amounts		
12. Statement value at end of current period (Line 10 minus Line 11)	29,908,530	42,143,001

STATEMENT AS OF JUNE 30, 2011 OF THE NATIONWIDE PROPERTY AND CASUALTY INSURANCE COMPANY

SCHEDULE D - PART 1B

Showing the Acquisitions, Dispositions and Non-Trading Activity
During the Current Quarter for all Bonds and Preferred Stock by Rating Class

	1 Book/Adjusted Carrying Value Beginning of Current Quarter	2 Acquisitions During Current Quarter	3 Dispositions During Current Quarter	4 Non-Trading Activity During Current Quarter	5 Book/Adjusted Carrying Value End of First Quarter	6 Book/Adjusted Carrying Value End of Second Quarter	7 Book/Adjusted Carrying Value End of Third Quarter	8 Book/Adjusted Carrying Value December 31 Prior Year
BONDS								
1. Class 1 (a)	28,486,297	8,058,125	7,585,201	(50,518)	28,486,297	28,908,703		41,143,236
2. Class 2 (a)	999,792			31	999,792	999,823		999,762
3. Class 3 (a)								
4. Class 4 (a)								
5. Class 5 (a)								
6. Class 6 (a)								
7. Total Bonds	29,486,089	8,058,125	7,585,201	(50,487)	29,486,089	29,908,526		42,142,998
PREFERRED STOCK								
8. Class 1								
9. Class 2								
10. Class 3								
11. Class 4								
12. Class 5								
13. Class 6								
14. Total Preferred Stock								
15. Total Bonds and Preferred Stock	29,486,089	8,058,125	7,585,201	(50,487)	29,486,089	29,908,526		42,142,998

(a) Book/Adjusted Carrying Value column for the end of the current reporting period includes the following amount of non-rated short-term and cash equivalent bonds by NAIC designation: NAIC 1 \$; NAIC 2 \$; NAIC 3 \$;
NAIC 4 \$; NAIC 5 \$; NAIC 6 \$

SCHEDULE DA - PART 1

Short-Term Investments

	1	2	3	4	5
	Book/Adjusted Carrying Value	Par Value	Actual Cost	Interest Collected Year-to-Date	Paid for Accrued Interest Year-to-Date
9199999 Totals	10,393,363	XXX	10,393,363	47	

SCHEDULE DA - VERIFICATION

Short-Term Investments

	1	2
	Year To Date	Prior Year Ended December 31
1. Book/adjusted carrying value, December 31 of prior year	2,467,516	4,731,097
2. Cost of short-term investments acquired	353,938,764	396,008,517
3. Accrual of discount		
4. Unrealized valuation increase (decrease)		
5. Total gain (loss) on disposals		
6. Deduct consideration received on disposals	346,012,917	398,272,098
7. Deduct amortization of premium		
8. Total foreign exchange change in book/adjusted carrying value		
9. Deduct current year's other than temporary impairment recognized		
10. Book/adjusted carrying value at end of current period (Lines 1+2+3+4+5-6-7+8-9)	10,393,363	2,467,516
11. Deduct total nonadmitted amounts		
12. Statement value at end of current period (Line 10 minus Line 11)	10,393,363	2,467,516

Schedule DB - Part A - Verification - Options, Caps, Floors, Collars, Swaps and Forwards
N O N E

Schedule DB - Part B - Verification - Futures Contracts
N O N E

Schedule DB - Part C - Section 1 - Replication (Synthetic Asset) Transactions (RSATs) Open
N O N E

Schedule DB-Part C-Section 2-Reconciliation of Replication (Synthetic Asset) Transactions Open
N O N E

Schedule DB - Verification - Book/Adjusted Carrying Value, Fair Value and Potential Exposure of
Derivatives
N O N E

Schedule E - Verification - Cash Equivalents
N O N E

Schedule A - Part 2 - Real Estate Acquired and Additions Made
N O N E

Schedule A - Part 3 - Real Estate Disposed
N O N E

Schedule B - Part 2 - Mortgage Loans Acquired
N O N E

Schedule B - Part 3 - Mortgage Loans Disposed, Transferred or Repaid
N O N E

Schedule BA - Part 2 - Other Long-Term Invested Assets Acquired
N O N E

Schedule BA - Part 3 - Other Long-Term Invested Assets Disposed, Transferred or Repaid
N O N E

STATEMENT AS OF JUNE 30, 2011 OF THE NATIONWIDE PROPERTY AND CASUALTY INSURANCE COMPANY

SCHEDULE D - PART 3

Show All Long-Term Bonds and Stock Acquired During the Current Quarter

[illegible]

(a) For all common stock bearing the NAIC market indicator "U" provide: the number of such issues

SCHEDULE D - PART 4

CUSIP Identification	Description	Foreign	Disposal Date	Name of Purchaser	Number of Shares of Stock	Consideration	Par Value	Actual Cost	Prior Year Book/ Adjusted Carrying Value	Change In Book/Adjusted Carrying Value					Book/ Adjusted Carrying Value at Disposal Date	Foreign Exchange Gain (Loss) on Disposal	Realized Gain (Loss) on Disposal	Total Gain (Loss) on Disposal	Bond Interest/ Stock Dividends Received During Year	Maturity Date	NAIC Designation or Market Indicator (a)
										11 Unrealized Valuation Increase/ (Decrease)	12 Current Year's (Amortization)/ Accretion	13 Other Than Temporary Impairment Recognized	14 Total Change in Book/ Adjusted Carrying Value (11 + 12 - 13)	15 Total Foreign Exchange Change in Book /Adjusted Carrying Value							
912828-KW-9	U S Treasury Nt 3.250% 05/31/16		06/28/2011	Barclays Capital		8,205,621	7,580,000	7,579,995	7,580,000					7,580,000		625,621	625,621	142,695	05/31/2016	1	
05999999. Bonds - U.S. Governments						8,205,621	7,580,000	7,579,995	7,580,000					7,580,000		625,621	625,621	142,695	XXX	XXX	
312913-ZE-9	FHLMC REMIC Ser 1437-HD 7.000% 12/15/2		06/01/2011	Paydown		4,838	4,838	4,962	4,915		(78)		(78)	4,838				141	12/01/2022	1	
31340Y-BH-1	FHLMC REMIC Ser 6-C 9.050% 06/15/19		05/15/2011	Paydown		.85	.85	.90	.87		(2)		(2)	.85				.3	03/16/2018	1	
313602-DV-3	FNMA REMIC Ser 1988-15A 9.000% 06/25/1		06/01/2011	Paydown		.279	.279	.282	.280		(1)		(1)	.279				.12	05/01/2018	1	
31999999. Bonds - U.S. Special Revenues						5,202	5,202	5,334	5,282		(81)		(81)	5,202				156	XXX	XXX	
83999997. Total - Bonds - Part 4						8,210,823	7,585,202	7,585,329	7,585,282		(81)		(81)	7,585,202		625,621	625,621	142,851	XXX	XXX	
83999998. Total - Bonds - Part 5						XXX	XXX	XXX	XXX	XXX	XXX	XXX	XXX	XXX	XXX	XXX	XXX	XXX	XXX	XXX	XXX
83999999. Total - Bonds						8,210,823	7,585,202	7,585,329	7,585,282		(81)		(81)	7,585,202		625,621	625,621	142,851	XXX	XXX	
89999997. Total - Preferred Stocks - Part 4						XXX	XXX											XXX	XXX		
89999998. Total - Preferred Stocks - Part 5						XXX	XXX	XXX	XXX	XXX	XXX	XXX	XXX	XXX	XXX	XXX	XXX	XXX	XXX	XXX	
89999999. Total - Preferred Stocks						XXX	XXX											XXX	XXX		
97999997. Total - Common Stocks - Part 4						XXX	XXX											XXX	XXX		
97999998. Total - Common Stocks - Part 5						XXX	XXX	XXX	XXX	XXX	XXX	XXX	XXX	XXX	XXX	XXX	XXX	XXX	XXX	XXX	
97999999. Total - Common Stocks						XXX	XXX											XXX	XXX		
98999999. Total - Preferred and Common Stocks						XXX	XXX											XXX	XXX		
99999999 - Totals						8,210,823	XXX	7,585,329	7,585,282		(81)		(81)	7,585,202		625,621	625,621	142,851	XXX	XXX	

Schedule DB - Part A - Section 1 - Options, Caps, Floors, Collars, Swaps and Forwards Open
N O N E

Schedule DB - Part B - Section 1 - Futures Contracts Open
N O N E

Schedule DB - Part B - Section 1B - Brokers with whom cash deposits have been made
N O N E

Schedule DB - Part D - Counterparty Exposure for Derivative Instruments Open
N O N E

Schedule DL - Part 1 - Reinvested Collateral Assets Owned
N O N E

Schedule DL - Part 2 - Reinvested Collateral Assets Owned
N O N E

STATEMENT AS OF JUNE 30, 2011 OF THE NATIONWIDE PROPERTY AND CASUALTY INSURANCE COMPANY

SCHEDULE E - PART 1 - CASH

[illegible]

STATEMENT AS OF JUNE 30, 2011 OF THE NATIONWIDE PROPERTY AND CASUALTY INSURANCE COMPANY

SCHEDULE E - PART 2 - CASH EQUIVALENTS

Show Investments Owned End of Current Quarter

1	2	3	4	5	6	7	8
Description	Code	Date Acquired	Rate of Interest	Maturity Date	Book/Adjusted Carrying Value	Amount of Interest Due and Accrued	Amount Received During Year
NONE							
8699999 - Total Cash Equivalents							



SUPPLEMENT FOR THE QUARTER ENDING JUNE 30, 2011 OF THE NATIONWIDE PROPERTY AND CASUALTY INSURANCE COMPANY

Designate the type of health care providers reported on this page:
Physicians, including surgeons and osteopaths

SUPPLEMENT A TO SCHEDULE T
EXHIBIT OF MEDICAL PROFESSIONAL LIABILITY PREMIUMS WRITTEN
ALLOCATED BY STATES AND TERRITORIES

States, etc.	1 Direct Premiums Written	2 Direct Premiums Earned	Direct Losses Paid		5 Direct Losses Incurred	Direct Losses Unpaid		8 Direct Losses Incurred But Not Reported
			3 Amount	4 No. of Claims		6 Amount Reported	7 No. of Claims	
1. Alabama.....AL								
2. Alaska.....AK								
3. Arizona.....AZ								
4. Arkansas.....AR								
5. California.....CA								
6. Colorado.....CO								
7. Connecticut.....CT								
8. Delaware.....DE								
9. District of Columbia.....DC								
10. Florida.....FL								
11. Georgia.....GA								
12. Hawaii.....HI								
13. Idaho.....ID								
14. Illinois.....IL								
15. Indiana.....IN								
16. Iowa.....IA								
17. Kansas.....KS								
18. Kentucky.....KY								
19. Louisiana.....LA								
20. Maine.....ME								
21. Maryland.....MD								
22. Massachusetts.....MA								
23. Michigan.....MI								
24. Minnesota.....MN								
25. Mississippi.....MS								
26. Missouri.....MO								
27. Montana.....MT								
28. Nebraska.....NE								
29. Nevada.....NV								
30. New Hampshire.....NH								
31. New Jersey.....NJ								
32. New Mexico.....NM								
33. New York.....NY								
34. North Carolina.....NC								
35. North Dakota.....ND								
36. Ohio.....OH								
37. Oklahoma.....OK								
38. Oregon.....OR								
39. Pennsylvania.....PA								
40. Rhode Island.....RI								
41. South Carolina.....SC								
42. South Dakota.....SD								
43. Tennessee.....TN								
44. Texas.....TX								
45. Utah.....UT								
46. Vermont.....VT								
47. Virginia.....VA								
48. Washington.....WA								
49. West Virginia.....WV								
50. Wisconsin.....WI								
51. Wyoming.....WY								
52. American Samoa.....AS								
53. Guam.....GU								
54. Puerto Rico.....PR								
55. U.S. Virgin Islands.....VI								
56. Northern Mariana Islands.....MP								
57. Canada.....CN								
58. Aggregate Other Aliens.....OT								
59. Totals								
DETAILS OF WRITE-INS								
5801.								
5802.								
5803.								
5898. Summary of remaining write-ins for Line 58 from overflow page								
5899. Totals (Lines 5801 through 5803 plus 5898)(Line 58 above)								

NONE



SUPPLEMENT FOR THE QUARTER ENDING JUNE 30, 2011 OF THE NATIONWIDE PROPERTY AND CASUALTY INSURANCE COMPANY

Designate the type of health care providers reported on this page:
Hospitals

SUPPLEMENT A TO SCHEDULE T
EXHIBIT OF MEDICAL PROFESSIONAL LIABILITY PREMIUMS WRITTEN
ALLOCATED BY STATES AND TERRITORIES

	1	2	Direct Losses Paid		5	Direct Losses Unpaid		8
			3	4		6	7	
States, etc.	Direct Premiums Written	Direct Premiums Earned	Amount	No. of Claims	Direct Losses Incurred	Amount Reported	No. of Claims	Direct Losses Incurred But Not Reported
1. Alabama.....AL								
2. Alaska.....AK								
3. Arizona.....AZ								
4. Arkansas.....AR								
5. California.....CA								
6. Colorado.....CO								
7. Connecticut.....CT								
8. Delaware.....DE								
9. District of Columbia.....DC								
10. Florida.....FL								
11. Georgia.....GA								
12. Hawaii.....HI								
13. Idaho.....ID								
14. Illinois.....IL								
15. Indiana.....IN								
16. Iowa.....IA								
17. Kansas.....KS								
18. Kentucky.....KY								
19. Louisiana.....LA								
20. Maine.....ME								
21. Maryland.....MD								
22. Massachusetts.....MA								
23. Michigan.....MI								
24. Minnesota.....MN								
25. Mississippi.....MS								
26. Missouri.....MO								
27. Montana.....MT								
28. Nebraska.....NE								
29. Nevada.....NV								
30. New Hampshire.....NH								
31. New Jersey.....NJ								
32. New Mexico.....NM								
33. New York.....NY								
34. North Carolina.....NC								
35. North Dakota.....ND								
36. Ohio.....OH								
37. Oklahoma.....OK								
38. Oregon.....OR								
39. Pennsylvania.....PA								
40. Rhode Island.....RI								
41. South Carolina.....SC								
42. South Dakota.....SD								
43. Tennessee.....TN								
44. Texas.....TX								
45. Utah.....UT								
46. Vermont.....VT								
47. Virginia.....VA								
48. Washington.....WA								
49. West Virginia.....WV								
50. Wisconsin.....WI								
51. Wyoming.....WY								
52. American Samoa.....AS								
53. Guam.....GU								
54. Puerto Rico.....PR								
55. U.S. Virgin Islands.....VI								
56. Northern Mariana Islands.....MP								
57. Canada.....CN								
58. Aggregate Other Aliens.....OT								
59. Totals								
DETAILS OF WRITE-INS								
5801.								
5802.								
5803.								
5898. Summary of remaining write-ins for Line 58 from overflow page.....								
5899. Totals (Lines 5801 through 5803 plus 5898)(Line 58 above)								

NONE



SUPPLEMENT FOR THE QUARTER ENDING JUNE 30, 2011 OF THE NATIONWIDE PROPERTY AND CASUALTY INSURANCE COMPANY

Designate the type of health care providers reported on this page:
Other health care professionals, including dentists

SUPPLEMENT A TO SCHEDULE T
EXHIBIT OF MEDICAL PROFESSIONAL LIABILITY PREMIUMS WRITTEN
ALLOCATED BY STATES AND TERRITORIES

States, etc.	1 Direct Premiums Written	2 Direct Premiums Earned	Direct Losses Paid		5 Direct Losses Incurred	Direct Losses Unpaid		8 Direct Losses Incurred But Not Reported
			3 Amount	4 No. of Claims		6 Amount Reported	7 No. of Claims	
1. Alabama.....AL								
2. Alaska.....AK								
3. Arizona.....AZ								
4. Arkansas.....AR								
5. California.....CA								
6. Colorado.....CO								
7. Connecticut.....CT								
8. Delaware.....DE								
9. District of Columbia.....DC								
10. Florida.....FL					11			88
11. Georgia.....GA								
12. Hawaii.....HI								
13. Idaho.....ID								
14. Illinois.....IL					3			27
15. Indiana.....IN								
16. Iowa.....IA								
17. Kansas.....KS								
18. Kentucky.....KY								
19. Louisiana.....LA								
20. Maine.....ME								
21. Maryland.....MD								
22. Massachusetts.....MA								
23. Michigan.....MI								
24. Minnesota.....MN								
25. Mississippi.....MS								
26. Missouri.....MO								
27. Montana.....MT								
28. Nebraska.....NE								
29. Nevada.....NV								
30. New Hampshire.....NH								
31. New Jersey.....NJ								
32. New Mexico.....NM								
33. New York.....NY								
34. North Carolina.....NC								
35. North Dakota.....ND								
36. Ohio.....OH					(1)			5
37. Oklahoma.....OK								
38. Oregon.....OR								
39. Pennsylvania.....PA					(10)			101
40. Rhode Island.....RI								
41. South Carolina.....SC								
42. South Dakota.....SD								
43. Tennessee.....TN								
44. Texas.....TX								
45. Utah.....UT								
46. Vermont.....VT								
47. Virginia.....VA					2			9
48. Washington.....WA								
49. West Virginia.....WV								
50. Wisconsin.....WI								
51. Wyoming.....WY								
52. American Samoa.....AS								
53. Guam.....GU								
54. Puerto Rico.....PR								
55. U.S. Virgin Islands.....VI								
56. Northern Mariana Islands.....MP								
57. Canada.....CN								
58. Aggregate Other Aliens.....OT								
59. Totals					5			231
DETAILS OF WRITE-INS								
5801.								
5802.								
5803.								
5898. Summary of remaining write-ins for Line 58 from overflow page								
5899. Totals (Lines 5801 through 5803 plus 5898)(Line 58 above)								



SUPPLEMENT FOR THE QUARTER ENDING JUNE 30, 2011 OF THE NATIONWIDE PROPERTY AND CASUALTY INSURANCE COMPANY

Designate the type of health care providers reported on this page:
Other health care facilities

SUPPLEMENT A TO SCHEDULE T
EXHIBIT OF MEDICAL PROFESSIONAL LIABILITY PREMIUMS WRITTEN
ALLOCATED BY STATES AND TERRITORIES

	1	2	Direct Losses Paid		5	Direct Losses Unpaid		8
			3	4		6	7	
States, etc.	Direct Premiums Written	Direct Premiums Earned	Amount	No. of Claims	Direct Losses Incurred	Amount Reported	No. of Claims	Direct Losses Incurred But Not Reported
1. Alabama.....AL								
2. Alaska.....AK								
3. Arizona.....AZ								
4. Arkansas.....AR								
5. California.....CA								
6. Colorado.....CO								
7. Connecticut.....CT								
8. Delaware.....DE								
9. District of Columbia.....DC								
10. Florida.....FL								
11. Georgia.....GA								
12. Hawaii.....HI								
13. Idaho.....ID								
14. Illinois.....IL								
15. Indiana.....IN								
16. Iowa.....IA								
17. Kansas.....KS								
18. Kentucky.....KY								
19. Louisiana.....LA								
20. Maine.....ME								
21. Maryland.....MD								
22. Massachusetts.....MA								
23. Michigan.....MI								
24. Minnesota.....MN								
25. Mississippi.....MS								
26. Missouri.....MO								
27. Montana.....MT								
28. Nebraska.....NE								
29. Nevada.....NV								
30. New Hampshire.....NH								
31. New Jersey.....NJ								
32. New Mexico.....NM								
33. New York.....NY								
34. North Carolina.....NC								
35. North Dakota.....ND								
36. Ohio.....OH								
37. Oklahoma.....OK								
38. Oregon.....OR								
39. Pennsylvania.....PA								
40. Rhode Island.....RI								
41. South Carolina.....SC								
42. South Dakota.....SD								
43. Tennessee.....TN								
44. Texas.....TX								
45. Utah.....UT								
46. Vermont.....VT								
47. Virginia.....VA								
48. Washington.....WA								
49. West Virginia.....WV								
50. Wisconsin.....WI								
51. Wyoming.....WY								
52. American Samoa.....AS								
53. Guam.....GU								
54. Puerto Rico.....PR								
55. U.S. Virgin Islands.....VI								
56. Nothern Mariana Islands.....MP								
57. Canada.....CN								
58. Aggregate Other Aliens.....OT								
59. Totals								
DETAILS OF WRITE-INS								
5801.								
5802.								
5803.								
5898. Summary of remaining write-ins for Line 58 from overflow page.....								
5899. Totals (Lines 5801 through 5803 plus 5898)(Line 58 above)								