



QUARTERLY STATEMENT
AS OF MARCH 31, 2002
OF THE CONDITION AND AFFAIRS OF THE

U.S. FINANCIAL LIFE INSURANCE COMPANY

NAIC Group Code	0395	0395	NAIC Company Code	84530	Employer's ID Number	38-2046096
	(Current Period)	(Prior Period)				
Organized under the Laws of	Ohio			State of Domicile or Port of Entry	Ohio	
Country of Domicile	United States of America					
Incorporated	09/30/1974		Commenced Business	09/30/1974		
Statutory Home Office	10290 Alliance Road			Cincinnati, OH 45242		
	(Street and Number)			(City or Town, State and Zip Code)		
Main Administrative Office	10290 Alliance Road			513-686-2000		
	Cincinnati, OH 45242			(Area Code) (Telephone Number)		
	(City or Town, State and Zip Code)					
Mail Address	10290 Alliance Road			Cincinnati, OH 45242		
	(Street and Number or P.O. Box)			(City or Town, State and Zip Code)		
Primary Location of Books and Records	10290 Alliance Road			513-686-2026		
	Cincinnati, OH 45242			(Area Code) (Telephone Number)		
	(City or Town, State and Zip Code)					
Internet Website Address	www.usfli.com					
Statement Contact	Samuel Vincent Zink			513-686-2026		
	(Name)			(Area Code) (Telephone Number) (Extension)		
	vzink@mail.usfli.com			513-686-2294		
	(E-mail Address)			(FAX Number)		
Policyowner Relations Contact	10290 Alliance Road			513-686-2000		
	Cincinnati, OH 45242			(Area Code) (Telephone Number) (Extension)		
	(City or Town, State and Zip Code)					

OFFICERS

President	Paul Peter Aniskovich	Secretary	Loren Gail Lee
Chief Financial Officer	Samuel Vincent Zink	Actuary	Deloitte & Touche, LLP

VICE PRESIDENTS

Robert Lee Carroll	Scott Eric Christie	Timothy Joseph Herr
Bonnie Moyer Householder	Sharon Pannos Kaufman	Loren Gail Lee
David John Murphy	Steven George Orluck	William George Schlecter
Erik Paul Simmons	Samuel Vincent Zink	

DIRECTORS OR TRUSTEES

Paul Peter Aniskovich	Chandler Louis McKelvey	Robert Lee Carroll
David John Murphy	Steven George Orluck	Sharon Pannos Kaufman

State ofOhio..... } ss
County ofHamilton..... }

The officers of this reporting entity, being duly sworn, each depose and say that they are the described officers of said reporting entity, and that on the reporting period stated above, all of the herein described assets were the absolute property of the said reporting entity, free and clear from any liens or claims thereon, except as herein stated, and that this statement, together with related exhibits, schedules and explanations therein contained, annexed or referred to is a full and true statement of all the assets and liabilities and of the condition and affairs of the said reporting entity as of the reporting period stated above, and of its income and deductions therefrom for the period ended, and have been completed in accordance with the NAIC Annual Statement Instructions and Accounting Practices and Procedures Manual except to the extent that: (1) state law may differ; or, (2) that state rules or regulations require differences in reporting not related to accounting practices and procedures, according to the best of their information, knowledge and belief, respectively.

Paul Peter Aniskovich President	Loren Gail Lee Secretary	Samuel Vincent Zink Chief Financial Officer
Subscribed and sworn to before me this 7th day of May, 2002		

ASSETS

	Current Statement Date			4 December 31 Prior Year Net Admitted Assets
	1 Assets	2 Nonadmitted Assets	3 Net Admitted Assets (Cols. 1 - 2)	
1. Bonds	188,676,599		188,676,599	172,105,587
2. Stocks:				
2.1 Preferred stocks				
2.2 Common stocks				
3. Mortgage loans on real estate:				
3.1 First liens	207,900		207,900	207,900
3.2 Other than first liens				
4. Real estate:				
4.1 Properties occupied by the company (less \$ encumbrances)				
4.2 Properties held for the production of income (less \$ encumbrances)				
4.3 Properties held for sale (less \$ encumbrances)				
5. Policy loans	3,367,100		3,367,100	3,566,836
6. Premium notes, including \$ for first year premiums				
7. Cash (\$9,725,171) and short-term investments (\$)	9,725,171		9,725,171	7,729,742
8. Other invested assets				
9. Receivable for securities				
10. Aggregate write-ins for invested assets				
11. Subtotals, cash and invested assets (Lines 1 to 10)	201,976,771		201,976,771	183,610,066
12. Reinsurance ceded:				
12.1 Amounts recoverable from reinsurers	4,084,248	0	4,084,248	3,668,448
12.2 Commissions and expense allowances due	564,233	0	564,233	7,067,870
12.3 Experience rating and other refunds due				
12.4 Other amounts receivable under reinsurance contracts	215,078	0	215,078	1,293,885
13. Electronic data processing equipment and software	755,997	134,852	621,145	431,360
14. Federal and foreign income tax recoverable and interest thereon (including \$1,678,000 net deferred tax asset)	1,678,000	0	1,678,000	1,678,000
15. Guaranty funds receivable or on deposit	82,561	0	82,561	101,586
16. Life insurance premiums and annuity considerations deferred and uncollected on in force business (less premiums on reinsurance ceded and less \$1,232,122 loading)	4,272,273	0	4,272,273	5,066,020
17. Accident and health premiums due and unpaid				
18. Investment income due and accrued	3,212,334	0	3,212,334	2,849,809
19. Net adjustment in assets and liabilities due to foreign exchange rates				
20. Receivable from parent, subsidiaries and affiliates				28,612
21. Amounts receivable relating to uninsured accident and health plans				
22. Amounts due from agents	322,641	255,768	66,874	74,713
23. Other assets nonadmitted	2,179,886	2,179,886		
24. Aggregate write-ins for other than invested assets	375,194	375,194		
25. Total assets excluding Separate Accounts business (Lines 11 to 24)	219,719,215	2,945,700	216,773,515	205,870,369
26. From Separate Accounts Statement				
27. Total (Lines 25 and 26)	219,719,215	2,945,700	216,773,515	205,870,369
DETAILS OF WRITE-INS				
1001.				
1002.				
1003.				
1098. Summary of remaining write-ins for Line 10 from overflow page				
1099. Totals (Lines 1001 thru 1003 plus 1098)(Line 10 above)				
2401. Prepaid Expenses	337,801	337,801	0	0
2402. Company Auto	37,393	37,393	0	0
2403.				
2498. Summary of remaining write-ins for Line 24 from overflow page				
2499. Totals (Lines 2401 thru 2403 plus 2498)(Line 24 above)	375,194	375,194		

LIABILITIES, SURPLUS AND OTHER FUNDS

	1 Current Statement Date	2 December 31 Prior Year
1. Aggregate reserve for Life contracts \$179,554,204 less \$included in Line 6.3 (including \$51,213,145 Modco Reserve)	179,554,204	169,142,323
2. Aggregate reserve for accident and health contracts (including \$Modco Reserve)	29,165	29,363
3. Liability for deposit-type contracts (including \$0 Modco Reserve)	2,833,755	2,827,915
4. Contract claims:		
4.1 Life	2,794,625	2,798,373
4.2 Accident and health		
5. Policyholders' dividends \$and coupons \$due and unpaid		
6. Provision for policyholders' dividends and coupons payable in following calendar year—estimated amounts:		
6.1 Dividends apportioned for payment to(including \$Modco Reserve)		
6.2 Dividends not yet apportioned (including \$Modco Reserve)		
6.3 Coupons and similar benefits (including \$Modco Reserve)		
7. Amount provisionally held for deferred dividend policies not included in Line 6		
8. Premiums and annuity considerations for life and accident and health contracts received in advance less \$discount; including \$accident and health premiums	808,785	502,554
9. Contract liabilities not included elsewhere:		
9.1 Surrender values on canceled contracts		
9.2 Provision for experience rating refunds, including \$accident and health experience rating refunds		
9.3 Other amounts payable on reinsurance including \$assumed and \$154,521 ceded	154,421	1,908,833
9.4 Interest Maintenance Reserve	133,598	45,222
10. Commissions to agents due or accrued—life and annuity contracts \$ accident and health \$and deposit-type contract funds \$	810,944	
11. Commissions and expense allowances payable on reinsurance assumed		
12. General expenses due or accrued	902,746	744,092
13. Transfers to Separate Accounts due or accrued (net) (Including \$accrued for expense allowances recognized in reserves)		
14. Taxes, licenses and fees due or accrued, excluding federal income taxes	479,097	905,549
15. Federal and foreign income taxes, including \$on realized capital gains (losses) (including \$net deferred tax liability)	688,904	1,456,125
16. Unearned investment income	33,605	123,739
17. Amounts withheld or retained by company as agent or trustee	61,526	35,259
18. Amounts held for agents' account, including \$1,138,722 agents' credit balances	1,138,722	894,622
19. Remittances and items not allocated	2,592,715	643,654
20. Net adjustment in assets and liabilities due to foreign exchange rates		
21. Liability for benefits for employees and agents if not included above		
22. Borrowed money \$and interest thereon \$		
23. Dividends to stockholders declared and unpaid		
24. Miscellaneous liabilities:		
24.1 Asset valuation reserve	665,242	260,569
24.2 Reinsurance in unauthorized companies		
24.3 Funds held under reinsurance treaties with unauthorized reinsurers		
24.4 Payable to parent, subsidiaries and affiliates	240,839	398,771
24.5 Drafts outstanding		
24.6 Liability for amounts held under uninsured accident and health plans		
24.7 Funds held under coinsurance		
24.8 Payable for securities		
24.9 Capital notes \$and interest thereon \$		
25. Aggregate write-ins for liabilities	22,135	21,152
26. Total Liabilities excluding Separate Accounts business (Lines 1 to 25)	193,945,026	182,738,114
27. From Separate Accounts Statement		
28. Total Liabilities (Lines 26 and 27)	193,945,026	182,738,114
29. Common capital stock	4,050,000	4,050,000
30. Preferred capital stock		
31. Aggregate write-ins for other than special surplus funds		
32. Surplus notes		
33. Gross paid in and contributed surplus	37,285,723	37,285,723
34. Aggregate write-ins for special surplus funds		
35. Unassigned funds (surplus)	(18,507,234)	(18,203,468)
36. Less treasury stock, at cost:		
36.1 shares common (value included in Line 29 \$)		
36.2 shares preferred (value included in Line 30 \$)		
37. Surplus (total Lines 31 + 32 + 33 + 34 + 35 - 36) (Including \$in Separate Accounts Statement)	18,778,489	19,082,255
38. Totals of Lines 29, 30 and 37	22,828,489	23,132,255
39. Totals of Lines 28 and 38	216,773,515	205,870,369
DETAILS OF WRITE-INS		
2501. Accounts Payable Escheats.....	22,135	21,152
2502.		
2503.		
2598. Summary of remaining write-ins for Line 25 from overflow page		
2599. Totals (Lines 2501 thru 2503 plus 2598)(Line 25 above)	22,135	21,152
3101.		
3102.		
3103.		
3198. Summary of remaining write-ins for Line 31 from overflow page		
3199. Totals (Lines 3101 thru 3103 plus 3198)(Line 31 above)		
3401.		
3402.		
3403.		
3498. Summary of remaining write-ins for Line 34 from overflow page		
3499. Totals (Lines 3401 thru 3403 plus 3498)(Line 34 above)		

SUMMARY OF OPERATIONS

(Excluding Unrealized Capital Gains and Losses)

	1 Current Year To Date	2 Prior Year Year to Date	3 Prior Year Ended December 31
1. Premiums and annuity considerations for life and accident and health policies and contracts	13,265,229	12,428,115	53,468,126
2. Considerations for supplementary contracts with life contingencies			
3. Net investment income	3,137,303	2,427,833	10,324,135
4. Amortization of Interest Maintenance Reserve (IMR)	10,037	6,990	48,504
5. Separate Accounts net gain from operations excluding unrealized gains or losses			
6. Commissions and expense allowances on reinsurance ceded	13,801,268	10,516,609	52,415,460
7. Reserve adjustments on reinsurance ceded	7,329,865	3,685,737	26,484,720
8. Miscellaneous Income:			
8.1 Income from fees associated with investment management, administration and contract guarantees from Separate Accounts			
8.2 Charges and fees for deposit-type contracts			
8.3 Aggregate write-ins for miscellaneous income	132,289		180,375
9. Totals (Lines 1 to 8.3)	37,675,991	29,065,284	142,921,320
10. Death benefits	6,218,695	7,085,462	22,564,150
11. Matured endowments (excluding guaranteed annual pure endowments)			
12. Annuity benefits	157,554	215,404	1,226,867
13. Disability benefits and benefits under accident and health contracts	17,255	3,968	20,156
14. Coupons, guaranteed annual pure endowments and similar benefits			
15. Surrender benefits and withdrawals for life contracts	1,939,366	1,148,720	4,120,187
16. Group conversions			
17. Interest and adjustments on contract or deposit-type contract funds	52,627		2,779,715
18. Payments on supplementary contracts with life contingencies			
19. Increase in aggregate reserves for life and accident and health contracts	10,411,683	6,053,845	39,765,708
20. Totals (Lines 10 to 19)	18,797,179	14,507,399	70,476,781
21. Commissions on premiums, annuity considerations, and deposit-type contract funds(direct business only)	12,518,991	9,582,846	44,215,127
22. Commissions and expense allowances on reinsurance assumed			
23. General insurance expenses	4,180,172	4,115,462	15,955,492
24. Insurance taxes, licenses and fees, excluding federal income taxes	1,194,759	907,363	3,965,096
25. Increase in loading on deferred and uncollected premiums	38,550	37,781	(292,245)
26. Net transfers to or (from) Separate Accounts			
27. Aggregate write-ins for deductions			
28. Totals (Lines 20 to 27)	36,729,651	29,150,851	134,320,251
29. Net gain from operations before dividends to policyholders and federal income taxes (Line 9 minus Line 28)	946,340	(85,567)	8,601,069
30. Dividends to policyholders			
31. Net gain from operations after dividends to policyholders and before federal income taxes (Line 29 minus Line 30)	946,340	(85,567)	8,601,069
32. Federal and foreign income taxes incurred (excluding tax on capital gains)	832,779	424,740	6,726,080
33. Net gain from operations after dividends to policyholders and federal income taxes and before realized capital gains or (losses) (Line 31 minus Line 32)	113,561	(510,307)	1,874,989
34. Net realized capital gains or (losses) less capital gains tax of \$0 (excluding taxes of \$98,399 transferred to the IMR)	52,987	4,621	(617,941)
35. Net income (Line 33 plus Line 34)	166,547	(505,685)	1,257,049
CAPITAL AND SURPLUS ACCOUNT			
36. Capital and surplus, December 31, prior year	23,132,255	14,109,645	14,109,645
37. Net income (Line 35)	166,547	(505,685)	1,257,049
38. Change in net unrealized capital gains (losses)			(2,100)
39. Change in net unrealized foreign exchange capital gain (loss)			
40. Change in net deferred income tax			670,000
41. Change in non-admitted assets and related items	(65,640)	(302,940)	284,388
42. Change in liability for reinsurance in unauthorized companies			
43. Change in reserve on account of change in valuation basis, (increase) or decrease			
44. Change in asset valuation reserve	(404,673)	(203,612)	112,122
45. Change in treasury stock			
46. Surplus (contributed to) withdrawn from Separate Accounts during period			
47. Other changes in surplus in Separate Accounts Statement			
48. Change in surplus notes			
49. Cumulative effect of changes in accounting principles		267,376	431,014
50. Capital changes:			
50.1 Paid in			7,000,000
50.2 Transferred from surplus (Stock Dividend)			
50.3 Transferred to surplus			
51. Surplus adjustment:			
51.1 Paid in			
51.2 Transferred to capital (Stock Dividend)			
51.3 Transferred from capital			
51.4 Change in surplus as a result of reinsurance			
52. Dividends to stockholders			
53. Aggregate write-ins for gains and losses in surplus		0	(729,863)
54. Net change in capital and surplus for the year (Lines 37 through 53)	(303,766)	(744,862)	9,022,610
55. Capital and surplus, as of statement date (Lines 36 + 54)	22,828,489	13,364,783	23,132,255
DETAILS OF WRITE-INS			
08.301. MISCELLANEOUS INCOME	132,289	0	180,375
08.302.			
08.303.			
08.398. Summary of remaining write-ins for Line 8.3 from overflow page			
08.399. TOTALS (Lines 08.301 thru 08.303 plus 08.398) (Line 8.3 above)	132,289		180,375
2701.			
2702.			
2703.			
2798. Summary of remaining write-ins for Line 27 from overflow page			
2799. Totals (Lines 2701 thru 2703 plus 2798)(Line 27 above)			
5301. Prior Period Adjustment - Reinsurance Premiums not paid in 1999 & 2000	0	0	(729,863)
5302.			
5303.			
5398. Summary of remaining write-ins for Line 53 from overflow page			
5399. Totals (Lines 5301 thru 5303 plus 5398)(Line 53 above)		0	(729,863)

CASH FLOW

	1 Current Year To Date	2 Prior Year Ended December 31
Cash from Operations		
1. Premiums and annuity considerations for life and accident and health contracts	14,280,111	53,416,111
2. Charges and fees for deposit-type contracts		
3. Considerations for supplementary contracts with life contingencies		
4. Net investment income	2,875,114	9,636,711
5. Commissions and expense allowances on reinsurance ceded	28,713,576	70,929,411
6. Fees associated with investment management, administration and contract guarantees from Separate Accounts		
7. Aggregate write-ins for miscellaneous income		
8. Total (Lines 1 to 7)	45,868,801	133,982,233
9. Death Benefits	5,739,893	23,939,489
10. Matured endowments		
11. Annuity Benefits	157,554	1,226,867
12. Disability benefits and benefits under accident and health contracts	1,089	6,290
13. Coupons, guaranteed annual pure endowments and similar benefits		
14. Surrender benefits and withdrawals for life contracts	1,939,366	4,120,187
15. Group conversions		
16. Interest and adjustments on contract or deposit-type contract funds	52,627	0
17. Payments on supplementary contracts with life contingencies		
18. Total (Lines 9 to 17)	7,890,528	29,292,833
19. Commissions on premiums, annuity considerations and deposit-type contract funds	11,708,047	44,215,127
20. Commissions and expense allowances on reinsurance assumed		
21. General insurance expenses	4,107,809	15,967,291
22. Insurance taxes, licenses and fees, excluding federal income taxes	1,621,211	3,876,868
23. Net transfers to or (from) Separate Accounts		
24. Aggregate write-ins for deductions		
25. Total (Lines 18 to 24)	25,327,596	93,352,118
26. Dividends paid to policyholders	1,600,000	6,953,362
27. Federal income taxes (excluding tax on capital gains)		
28. Total (Lines 25 to 27)	26,927,596	100,305,480
29. Net cash from operations (Line 8 minus Line 28)	18,941,205	33,676,753
Cash from Investments		
30. Proceeds from investments sold, matured or repaid:		
30.1 Bonds	3,007,801	7,401,112
30.2 Stocks		543,304
30.3 Mortgage loans		
30.4 Real estate		
30.5 Other invested assets		
30.6 Net gains or (losses) on cash and short-term investments		(691)
30.7 Miscellaneous proceeds		
30.8 Total investment proceeds (Lines 30.1 to 30.7)	3,007,801	7,943,725
31. Net tax on capital gains (losses)		
32. Total (Line 30.8 minus Line 31)	3,007,801	7,943,725
33. Cost of investments acquired (long-term only):		
33.1 Bonds	19,396,410	57,406,241
33.2 Stocks		400,000
33.3 Mortgage loans		210,000
33.4 Real estate		
33.5 Other invested assets		
33.6 Miscellaneous applications		
33.7 Total investments acquired (Lines 33.1 to 33.6)	19,396,410	58,016,241
34. Net increase (or decrease) in policy loans and premium notes	(199,736)	733,755
35. Net cash from investments (Line 32 minus Line 33.7 minus Line 34)	(16,188,873)	(50,806,271)
Cash from Financing and Miscellaneous Sources		
36. Cash provided:		
36.1 Surplus notes, capital and surplus paid in		7,000,000
36.2 Borrowed money \$less amounts repaid \$		(1,940,925)
36.3 Capital notes \$less amounts repaid \$		
36.4 Deposits on deposit-type contract funds and other liabilities without life or disability contingencies		44,210
36.5 Other cash provided	2,003,941	7,463,328
36.6 Total (Lines 36.1 to 36.5)	2,003,941	12,566,613
37. Cash applied:		
37.1 Dividends to stockholders paid		
37.2 Interest on indebtedness		126,964
37.3 Withdrawals on deposit-type contract funds and other liabilities without life or disability contingencies	52,757	12,225
37.4 Other applications (net)	2,708,087	1,697,445
37.5 Total (Lines 37.1 to 37.4)	2,760,844	1,836,634
38. Net cash from financing and miscellaneous sources (Line 36.6 minus Line 37.5)	(756,903)	10,729,979
RECONCILIATION OF CASH AND SHORT-TERM INVESTMENTS		
39. Net change in cash and short-term investments (Line 29, plus Line 35, plus Line 38)	1,995,429	(6,399,539)
40. Cash and short-term investments:		
40.1 Beginning of year	7,729,742	14,129,282
40.2 End of period (Line 39 plus Line 40.1)	9,725,171	7,729,742
DETAILS OF WRITE-INS		
0701.		
0702.		
0703.		
0798. Summary of remaining write-ins for Line 7 from overflow page		
0799. TOTALS (Lines 0701 thru 0703 plus 0798) (Line 7 above)		
2401.		
2402.		
2403.		
2498. Summary of remaining write-ins for Line 24 from overflow page		
2499. TOTALS (Lines 2401 thru 2403 plus 2498) (Line 24 above)		

EXHIBIT 1

DIRECT PREMIUMS AND DEPOSIT-TYPE CONTRACTS			
	1 Current Year to Date	2 Prior Year to Date	3 Prior Year Ended December 31
1. Industrial Life			
2. Ordinary Life Insurance	32,132,699	22,700,141	137,684,287
3. Ordinary Individual Annuities	16,883	28,755	71,968
4. Credit Life (Group & Individual)			
5. Group Life Insurance			
6. Group Annuities			
7. A & H - Group			
8. A & H - Credit (Group & Individual)			
9. A & H - Other			
10. Aggregate of All Other Lines of Business			
11. Subtotal	32,149,582	22,728,896	137,756,254
12. Deposit-Type Contracts	0		
13. Total	32,149,582	22,728,896	137,756,254
DETAILS OF WRITE-INS			
1001.			
1002.			
1003.			
1098. Summary of remaining write-ins for Line 10 from overflow page			
1099. Totals (Lines 1001 thru 1003 plus 1098)(Line 10 above)			

NOTES TO FINANCIAL STATEMENTS

1. Summary of Significant Accounting Policies

A. Accounting Practices

The Financial Statements of U.S. Financial Life Insurance Company ("the Company") are presented on the basis of accounting practices prescribed or permitted by the Ohio Insurance Department.

The Ohio Insurance Department recognizes only statutory accounting practices prescribed or permitted by the State of Ohio for determining and reporting the financial condition and results of operations of an insurance company, for determining its solvency under the Ohio Insurance law. The National Association of Insurance Commissioners' (NAIC) *Accounting and Procedures* manual, version effective January 1, 2001, (NAIC SAP) has been adopted as a component of prescribed or permitted practices by the State of Ohio. There are no material differences between accounting practices prescribed or permitted by NAIC SAP and by the State of Ohio.

17. Sale, Transfer and Servicing of Financial Assets and Extinguishments of Liabilities

C. Wash Sales

The Company did not sell any securities during the quarter ended March 31, 2002 that were reacquired within 30 days of the sale date.

GENERAL INTERROGATORIES

(Responses to these interrogatories should be based on changes that have occurred since the prior year end unless otherwise noted.)

PART 1 - COMMON INTERROGATORIES
GENERAL

1.1 Did the reporting entity implement any significant accounting policy changes which would require disclosure in the Notes to the Financial Statements? Yes [] No [X]

1.2 If yes, explain:
.....

2.1 Did the reporting entity experience any material transactions requiring the filing of Disclosure of Material Transactions with the State of Domicile, as required by the Model Act? Yes [] No [X]

2.2 If yes, has the report been filed with the domiciliary state? Yes [] No []

3.1 Has any change been made during the year of this statement in the charter, by-laws, articles of incorporation, or deed of settlement of the reporting entity? Yes [] No [X]

3.2 If yes, date of change:
If not previously filed, furnish herewith a certified copy of the instrument as amended.

4. Have there been any substantial changes in the organizational chart since the prior quarter end? Yes [] No [X]
If yes, attach an organizational chart.

5.1 Has the reporting entity been a party to a merger or consolidation during the period covered by this statement? Yes [] No [X]

5.2 If yes, provide the name of entity, NAIC Company Code, and state of domicile (use two letter state abbreviation) for any entity that has ceased to exist as a result of the merger or consolidation.

1 Name of Entity	2 NAIC Company Code	3 State of Domicile
.....
.....
.....

6. If the reporting entity is subject to a management agreement, including third-party administrator(s), managing general agent(s), attorney-in-fact, or similar agreement, have there been any significant changes regarding the terms of the agreement or principals involved? Yes [] No [X] NA []
If yes, attach an explanation.

7.1 State as of what date the latest financial examination of the reporting entity was made or is being made. 12/31/2000

7.2 State the as of date that the latest financial examination report became available from either the state of domicile or the reporting entity. This date should be the date of the examined balance sheet and not the date the report was completed or released. 12/31/2000

7.3 State as of what date the latest financial examination report became available to other states or the public from either the state of domicile or the reporting entity. This is the release date or completion date of the examination report and not the date of the examination (balance sheet date). 09/10/2001

7.4 By what department or departments?
.....

8.1 Has this reporting entity had any Certificates of Authority, licenses or registrations (including corporate registration, if applicable) suspended or revoked by any governmental entity during the reporting period? (You need not report an action, either formal or informal, if a confidentiality clause is part of the agreement.) Yes [] No [X]

8.2 If yes, give full information:
.....

GENERAL INTERROGATORIES

(Responses to these interrogatories should be based on changes that have occurred since the prior year end unless otherwise noted.)

INVESTMENT

9.1 Has there been any change in the reporting entity's own preferred or common stock? Yes [] No [X]

9.2 If yes, explain:
.....

10.1 Were any of the stocks, bonds, or other assets of the reporting entity loaned, placed under option agreement, or otherwise made available for use by another person? (Exclude securities under securities lending agreements.) Yes [] No [X]

10.2 If yes, give full and complete information relating thereto:
.....

11. Amount of real estate and mortgages held in other invested assets in Schedule BA:\$0

12. Amount of real estate and mortgages held in short-term investments:\$0

13.1 Does the reporting entity have any investments in parent, subsidiaries and affiliates? Yes [] No [X]

13.2 If yes, please complete the following:

	1 Prior Year-End Statement Value	2 Current Quarter Statement Value
13.21 Bonds	\$	\$
13.22 Preferred Stock	\$	\$
13.23 Common Stock	\$	\$
13.24 Short-term Investments	\$	\$
13.25 Mortgages, Loans or Real Estate	\$	\$
13.26 All Other	\$	\$
13.27 Total Investment in Parent, Subsidiaries and Affiliates (Subtotal Lines 13.21 to 13.26).....	\$	\$
13.28 Total Investment in Parent included in Lines 13.21 to 13.26 above	\$	\$
13.29 Receivable from Parent not included in Lines 13.21 to 13.26 above	\$	\$

14.1 Does the reporting entity have any hedging transactions reported on Schedule DB? Yes [] No [X]

14.2 If yes, has a comprehensive description of the hedging program been made available to the domiciliary state? Yes [] No []

If no, attach a description with this statement.

15. Excluding items in Schedule E, real estate, mortgage loans and investments held physically in the reporting entity's offices, vaults or safety deposit boxes, were all stocks, bonds and other securities, owned throughout the current year held pursuant to a custodial agreement with a qualified bank or trust company in accordance with Part 1 - General, Section IV.H - Custodial or Safekeeping Agreements of the NAIC Financial Condition Examiners Handbook? Yes [X] No []

15.1 For all agreements that comply with the requirements of the NAIC Financial Condition Examiners Handbook, complete the following:

1 Name of Custodian(s)	2 Custodian Address
USBank.....	425 Walnut Street, Cincinnati, Ohio 45201.....

15.2 For all agreements that do not comply with the requirements of the NAIC Financial Condition Examiners Handbook, provide the name, location and a complete explanation:

1 Name(s)	2 Location(s)	3 Complete Explanation(s)

15.3 Have there been any changes, including name changes in the custodian(s) identified in 15.1 during the current year? Yes [] No [X]

15.4 If yes, give full and complete information relating thereto:

1 Old Custodian	2 New Custodian	3 Date of Change	4 Reason

15.5 Identify all investment advisors, brokers/dealers or individuals acting on behalf of broker/dealers that have access to the investment accounts, handle securities and have authority to make investments on behalf of the reporting entity:

1 Central Registration Depository	2 Name(s)	3 Address
107713.....	MONY Life Insurance Company.....	1740 Broadway, New York, NY 10019.....

GENERAL INTERROGATORIES (continued)

(Responses to these interrogatories should be based on changes that have occurred since the prior year end unless otherwise noted.)

PART 2 - LIFE & HEALTH

1.			1
	Report the statement value of mortgage loans at the end of this reporting period for the following categories:		Amount
1.1	Long-Term Mortgages In Good Standing		
1.11	Farm Mortgages	\$	207,900
1.12	Residential Mortgages	\$	
1.13	Commercial Mortgages	\$	
1.14	Total Mortgages in Good Standing	\$	207,900
1.2	Long-Term Mortgages In Good Standing with Restructured Terms		
1.21	Total Mortgages in Good Standing	\$	
1.3	Long-Term Mortgages Loans Upon which Interest is Overdue more than Three Months		
1.31	Farm Mortgages	\$	
1.32	Residential Mortgages	\$	
1.33	Commercial Mortgages	\$	
1.34	Total Mortgages with Interest Overdue more than Three Months.....	\$	
1.4	Long-Term Mortgages Loans in Process of Foreclosure		
1.41	Farm Mortgages	\$	
1.42	Residential Mortgages	\$	
1.43	Commercial Mortgages	\$	
1.44	Total Mortgages in Process of Foreclosure.....	\$	
1.5	Total Mortgage Loans (Lines 1.14 + 1.21 + 1.34 + 1.44) (Page 2, Col. 3, Lines 3.1 plus 3.2).....	\$	207,900
1.6	Long-Term Mortgages Foreclosed, Properties Transferred to Real Estate in Current Quarter		
1.61	Farm Mortgages	\$	
1.62	Residential Mortgages	\$	
1.63	Commercial Mortgages	\$	
1.64	Total Mortgages Foreclosed and Transferred to Real Estate	\$	

SCHEDULE A - VERIFICATION

	1 First Quarter Current Year	2 Second Quarter Current Year	3 Third Quarter Current Year	4 Prior Year Ended December 31
1. Book/adjusted carrying value, beginning of period	NONE			
2. Increase (decrease) by adjustment				
3. Cost of acquired				
4. Cost of additions to and permanent improvements				
5. Total profit (loss) on sales				
6. Increase (decrease) by foreign exchange adjustment				
7. Amount received on sales				
8. Book/adjusted carrying value at end of current period				
9. Total valuation allowance				
10. Subtotal (Lines 8 plus 9)				
11. Total nonadmitted amounts				
12. Statement value, current period (Page 2, real estate lines, current period)				

SCHEDULE B - VERIFICATION

	1 First Quarter Current Year	2 Second Quarter Current Year	3 Third Quarter Current Year	4 Prior Year Ended December 31
1. Book/recorded investment excluding accrued interest on mortgages owned, beginning of period	210,000			
2. Amount loaned during period:				
2.1. Actual cost at time of acquisitions				210,000
2.2. Additional investment made after acquisitions				
3. Accrual of discount and mortgage interest points and committment fees.....				
4. Increase (decrease) by adjustment				
5. Total profit (loss) on sale				
6. Amounts paid on account or in full during the period				
7. Amortization of premium				
8. Increase (decrease) by foreign exchange adjustment.....				
9. Book value/recorded investment excluding accrued interest on mortgages owned at end of current period	210,000			210,000
10. Total valuation allowance	(2,100)			(2,100)
11. Subtotal (Lines 9 plus 10)	207,900			207,900
12. Total nonadmitted amounts				
13. Statement value of mortgages owned at end of current period	207,900			207,900

SCHEDULE BA - VERIFICATION

Other Invested Assets Included in Schedule BA

	1 First Quarter Current Year	2 Second Quarter Current Year	3 Third Quarter Current Year	4 Prior Year Ended December 31
1. Book/adjusted carrying value of long-term invested assets owned, beginning of period	NONE			
2. Cost of acquisitions during period:				
2.1. Actual cost at time of acquisitions				
2.2. Additional investment made after acquisitions				
3. Accrual of discount				
4. Increase (decrease) by adjustment				
5. Total profit (loss) on sale				
6. Amounts paid on account or in full during the period				
7. Amortization of premium				
8. Increase (decrease) by foreign exchange adjustment.....				
9. Book/adjusted carrying value of long-term invested assets at end of current period				
10. Total valuation allowance				
11. Subtotal (Lines 9 plus 10)				
12. Total nonadmitted amounts				
13. Statement value of long-term invested assets at end of current period				

STATEMENT AS OF MARCH 31, 2002 OF THE U.S. FINANCIAL LIFE INSURANCE COMPANY

SCHEDULE D - PART 1B

Showing the Acquisitions, Dispositions and Non-Trading Activity
During the Current Quarter for all Bonds and Preferred Stock by Rating Class

	1 Statement Value Beginning of Current Quarter	2 Acquisitions During Current Quarter	3 Dispositions During Current Quarter	4 Non-Trading Activity During Current Quarter	5 Statement Value End of First Quarter	6 Statement Value End of Second Quarter	7 Statement Value End of Third Quarter	8 Statement Value December 31 Prior Year
BONDS								
1. Class 1	128,547,023	14,331,140	2,079,686	36,519	140,834,996			128,547,023
2. Class 2	38,962,024	5,065,270	776,733	(8,249)	43,242,312			38,962,024
3. Class 3	2,867,521			512	2,868,033			2,867,521
4. Class 4	614,000				614,000			614,000
5. Class 5	1,115,023			2,233	1,117,256			1,115,023
6. Class 6								
7. Total Bonds	172,105,591	19,396,410	2,856,419	31,015	188,676,597			172,105,591
PREFERRED STOCK								
8. Class 1								
9. Class 2								
10. Class 3								
11. Class 4								
12. Class 5								
13. Class 6								
14. Total Preferred Stock								
15. Total Bonds and Preferred Stock	172,105,591	19,396,410	2,856,419	31,015	188,676,597			172,105,591

SCHEDULE DA - PART 1

Short-Term Investments Owned End of Current Quarter					
	1 Book/Adjusted Carrying Value	2 Statement Value	3 Actual Cost	4 Amount of Interest Received Current Quarter	5 Paid for Accrued Interest
8099999 Totals		XXX			

SCHEDULE DA - PART 2- Verification

Short-Term Investments Owned				
	1 First Quarter Current Year	2 Second Quarter Current Year	3 Third Quarter Current Year	4 Prior Year Ended December 31
1. Book/adjusted carrying value, beginning of period				10,816,442
2. Cost of short-term investments acquired				
3. Increase (decrease) by adjustment				(10,816,442)
4. Increase (decrease) by foreign exchange adjustment				
5. Total profit (loss) on disposal of short-term investments				
6. Consideration received on disposal of short-term investments				
7. Book/adjusted carrying value, current period				
8. Total valuation allowance				
9. Subtotal (Lines 7 plus 8)				
10. Total nonadmitted amounts				
11. Statement value (Lines 9 minus 10)				
12. Income collected during period				
13. Income earned during period				

Schedule DB - Part F - Section 1

NONE

Schedule DB - Part F - Section 2

NONE

Schedule S

NONE

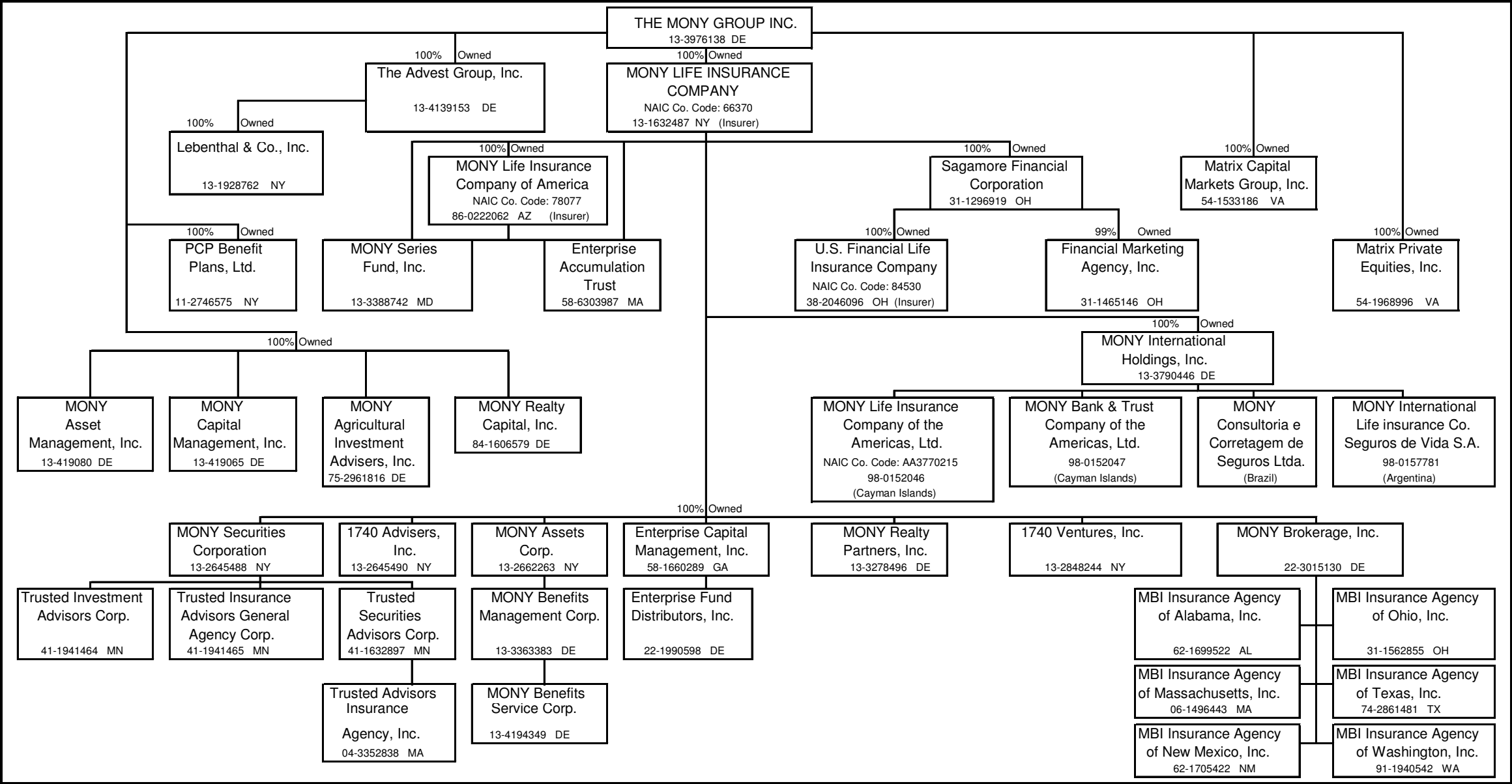
SCHEDULE T—PREMIUMS AND ANNUITY CONSIDERATIONS

During Current Year to Date - Allocated by States and Territories

		1	Direct Business Only				
			Life Contracts		4	5	6
			2	3			
States, Etc.		Is Insurer Licensed? (Yes or No)	Life Insurance Premiums	Annuity Considerations	Accident and Health Insurance Premiums, Including Policy, Membership and Other Fees	Deposit-Type Contract Funds	Other Considerations
1. Alabama	AL	Yes	740,372				
2. Alaska	AK	Yes	24,705				
3. Arizona	AZ	Yes	605,215				
4. Arkansas	AR	Yes	232,280				
5. California	CA	Yes	2,774,433				
6. Colorado	CO	Yes	711,471				
7. Connecticut	CT	Yes	917,085				
8. Delaware	DE	Yes	89,943				
9. District of Columbia	DC	No	14,358				
10. Florida	FL	Yes	2,670,821				
11. Georgia	GA	Yes	921,558				
12. Hawaii	HI	Yes	104,601				
13. Idaho	ID	No	12,329				
14. Illinois	IL	Yes	1,599,907				
15. Indiana	IN	Yes	856,183	4,971			
16. Iowa	IA	Yes	361,288				
17. Kansas	KS	Yes	461,160				
18. Kentucky	KY	Yes	672,984	2,000			
19. Louisiana	LA	Yes	422,086				
20. Maine	ME	Yes	168,979				
21. Maryland	MD	Yes	638,496				
22. Massachusetts	MA	Yes	1,171,044				
23. Michigan	MI	Yes	1,858,399	8,862			
24. Minnesota	MN	Yes	125,368				
25. Mississippi	MS	Yes	565,476				
26. Missouri	MO	Yes	724,704				
27. Montana	MT	Yes	125,388				
28. Nebraska	NE	Yes	178,528				
29. Nevada	NV	No	169,783				
30. New Hampshire	NH	Yes	411,910				
31. New Jersey	NJ	Yes	794,071				
32. New Mexico	NM	Yes	132,820				
33. New York	NY	No	617,309				
34. North Carolina	NC	Yes	1,565,694	150			
35. North Dakota	ND	Yes	206,409				
36. Ohio	OH	Yes	3,058,293				
37. Oklahoma	OK	Yes	356,523				
38. Oregon	OR	Yes	456,568				
39. Pennsylvania	PA	Yes	1,882,724				
40. Rhode Island	RI	Yes	220,423				
41. South Carolina	SC	Yes	710,767	600			
42. South Dakota	SD	Yes	407,461				
43. Tennessee	TN	Yes	1,154,672	300			
44. Texas	TX	Yes	3,158,563				
45. Utah	UT	Yes	117,643				
46. Vermont	VT	No	5,938				
47. Virginia	VA	No	94,273				
48. Washington	WA	Yes	592,679				
49. West Virginia	WV	Yes	69,400				
50. Wisconsin	WI	Yes	679,725				
51. Wyoming	WY	Yes	314,642				
52. American Samoa	AS	No	0				
53. Guam	GU	No	354				
54. Puerto Rico	PR	No	1,313				
55. US Virgin Islands	VI	No	2,794				
56. Canada	CN	No	8,387				
57. Aggregate Other Alien	OT	XXX					
58. Subtotal	(a)	45	36,940,298	16,883			
90. Reporting entity contributions for employee benefit plans		XXX					
91. Dividends or refunds applied to purchase paid-up additions and annuities		XXX					
92. Dividends or refunds applied to shorten endowment or premium paying period		XXX					
93. Premium or annuity considerations waived under disability or other contract provisions		XXX					
94. Aggregate of other amounts not allocable by State		XXX					
95. Totals (Direct Business)		XXX	36,940,298	16,883			
96. Plus Reinsurance Assumed		XXX					
97. Totals (All Business)		XXX	36,940,298	16,883			
98. Less Reinsurance Ceded		XXX	22,677,070				
99. Totals (All Business) less Reinsurance Ceded		XXX	14,263,227	16,883			
DETAILS OF WRITE-INS							
5701.		XXX					
5702.		XXX					
5703.		XXX					
5798. Summary of remaining write-ins for Line 57 from overflow page		XXX					
5799. Totals (Lines 5701 thru 5703 plus 5798)(Line 57 above)		XXX					
9401.		XXX					
9402.		XXX					
9403.		XXX					
9498. Summary of remaining write-ins for Line 94 from overflow page		XXX					
9499. Totals (Lines 9401 thru 9403 plus 9498)(Line 94 above)		XXX					

(a) Insert the number of yes responses except for Canada and Other Alien.

SCHEDULE Y - INFORMATION CONCERNING ACTIVITIES OF INSURER MEMBERS OF A HOLDING COMPANY GROUP
PART 1 - ORGANIZATIONAL CHART



SUPPLEMENTAL EXHIBITS AND SCHEDULES INTERROGATORIES

The following supplemental reports are required to be filed as part of your statement filing. However, in the event that your company does not transact the type of business for which the special report must be filed, your response of **NO** to the specific interrogatory will be accepted in lieu of filing a "NONE" report and a bar code will be printed below. If the supplemental is required of your company but is not being filed for whatever reason enter **SEE EXPLANATION** and provide an explanation following the interrogatory questions.

RESPONSES

1.

Will the SVO Compliance Certification be filed with this statement?

.....Yes.....
2.

Will the Trusteed Surplus Statement be filed with the State of Domicile and the NAIC with this statement?

.....No.....

Explanations:

Bar Codes:

Trusteed Surplus Statement (Document Identifier 490) here:



OVERFLOW PAGE FOR WRITE-INS

STATEMENT AS OF MARCH 31, 2002 OF THE U.S. FINANCIAL LIFE INSURANCE COMPANY

SCHEDULE A - PART 2

Showing all Real Estate ACQUIRED During the Current Quarter								
1 Description of Property	Location		4 Date Acquired	5 Name of Vendor	6 Actual Cost	7 Amount of Encumbrances	8 Book/Adjusted Carrying Value Less Encumbrances	9 Expended for Additions and Permanent Improvements
	2 City	3 State						
				NONE				
9999999 - Totals								

SCHEDULE A - PART 3

1	Location		4	5	6	7	8	9	10	11	12	13	14	15	16
	2	3													
Description of Property	City	State	Disposal Date	Name of Purchaser	Actual Cost	Increase (Decrease) by Adjustment	Increase (Decrease) by Foreign Exchange Adjustment	Expended for Additions, Permanent Improvements and Changes in Encumbrances	Book/ Adjusted Carrying Value Less Encumbrances	Amounts Received	Foreign Exchange Profit (Loss) on Sale	Realized Profit (Loss) on Sale	Total Profit (Loss) on Sale	Gross Income Earned Less Interest Incurred on Encumbrances	Taxes, Repairs and Expenses Incurred
					NONE										
9999999 Totals															

STATEMENT AS OF MARCH 31, 2002 OF THE U.S. FINANCIAL LIFE INSURANCE COMPANY

SCHEDULE B - PART 1

Showing all Mortgage Loans ACQUIRED during the Current Quarter

[illegible]

SCHEDULE B - PART 2

Showing all Mortgage Loans SOLD, transferred or paid in full during the Current Quarter

[illegible]

STATEMENT AS OF MARCH 31, 2002 OF THE U.S. FINANCIAL LIFE INSURANCE COMPANY

SCHEDULE BA - PART 1

Showing Other Long-Term Invested Assets ACQUIRED during the Current Quarter

1	Location		4	5	6	7	8	9	10									
Number of Units and Description	2 City	3 State	Name of Vendor	Date Acquired	Actual Cost	Amount of Encumbrances	Book/Adjusted Carrying Value Less Encumbrances	Increase (Decrease) by Adjustment	Increase (Decrease) by Foreign Exchange Adjustment									
NONE																		
										9999999 Totals								

SCHEDULE BA - PART 2

Showing Other Long-Term Invested Assets SOLD, transferred or paid in full during the Current Quarter

1	Location		4	5	6 Book/ Adjusted Carrying Value Less Encum- brances, Prior Year	7 Increase (Decrease) by Adjustment	8 Increase (Decrease) by Foreign Exchange Adjustment	9 Book/ Adjusted Carrying Value Less Encum- brances at Disposition	10 Consideration Received	11 Foreign Exchange Profit (Loss) on Sale	12 Realized Profit (Loss) on Sale	13 Total Profit (Loss) on Sale
	2	3										
Number of Units and Description	City	State	Name of Purchaser or Nature of Disposition	Date Acquired								
			NONE									
9999999 Totals												

STATEMENT AS OF MARCH 31, 2002 OF THE U.S. FINANCIAL LIFE INSURANCE COMPANY

SCHEDULE D - PART 3

Show All Long-Term Bonds and Stock Acquired by the Company During the Current Quarter

1 CUSIP Identification	2 Description	3 Date Acquired	4 Name of Vendor	5 Number of Shares of Stock	6 Actual Cost	7 Par Value	8 Paid for Accrued Interest and Dividends	9 NAIC Designation ^(a)
BONDS								
GOVERNMENTS								
UNITED STATES								
36213E-PQ-3	GNMA 6.000 12/01/2031	02/21/2002	MORGAN JP CHASE		3,325,967	3,336,654	13,903	1
912827-7L-0	UNITED STATES TREASURY 4.875 02/15/2012	02/08/2002	LEHMAN BROTHERS INC		4,992,773	5,000,000		1
0399996 - Bonds - U.S. Government					8,318,740	8,336,654	13,903	XXX
0399999 - Total - Bonds - U.S. Government					8,318,740	8,336,654	13,903	XXX
1099997 - Bonds - All Other Governments - Canada					0	0	0	XXX
1099998 - Bonds - All Other Governments - Other Countries					0	0	0	XXX
1099999 - Total - Bonds - All Other Government					0	0	0	XXX
1799996 - Bonds - States, Territory, Poss - United States					0	0	0	XXX
1799997 - Bonds - States, Territory, Poss - Canada					0	0	0	XXX
1799998 - Bonds - States, Territory, Poss - Other Countries					0	0	0	XXX
1799999 - Total - Bonds - States, Territories and Possessions					0	0	0	XXX
2499996 - Bonds - Political Subdivision - United States					0	0	0	XXX
2499997 - Bonds - Political Subdivision - Canada					0	0	0	XXX
2499998 - Bonds - Political Subdivision - Other Countries					0	0	0	XXX
2499999 - Total - Bonds - Political Subdivisions					0	0	0	XXX
3199996 - Bonds - Special Revenues - United States					0	0	0	XXX
3199997 - Bonds - Special Revenues - Canada					0	0	0	XXX
3199998 - Bonds - Special Revenues - Other Countries					0	0	0	XXX
3199999 - Total - Bonds - Special Revenue					0	0	0	XXX
PUBLIC UTILITIES (UNAFFILIATED)								
UNITED STATES								
15361G-AG-0	CENTRAL HUDSON GAS & ELECTRIC 5.870 03/28/2007	03/25/2002	MORGAN JP CHASE		1,000,000	1,000,000		1
210371-AH-3	CONSTELLATION ENERGY GRP CORPORATE 7.000 04/01/2012	03/21/2002	SALOMON/SMITH BARNEY		995,660	1,000,000		2
842634-AE-7	SOUTHERN COMPANY CAPITAL FUNDING 5.300 02/01/2007	01/29/2002	GOLDMAN SACHS		998,350	1,000,000		1
3899996 - Bonds - Public Utilities - United States					2,994,010	3,000,000	0	XXX
3899997 - Bonds - Public Utilities - Canada					0	0	0	XXX
3899998 - Bonds - Public Utilities - Other Countries					0	0	0	XXX
3899999 - Total - Bonds - Public Utilities					2,994,010	3,000,000	0	XXX
INDUSTRIAL & MISC. (UNAFFIL)								
UNITED STATES								
110122-AG-3	BRISTOL-MYERS SQUIBB CO 5.750 10/01/2011	02/08/2002	CREDIT SUISSE FIRST BOSTON CORP		998,090	1,000,000	21,563	1Z
370334-AS-3	GENERAL MILLS 6.000 02/15/2012	02/13/2002	DEUTSCHE BANK SECURITIES		1,993,360	2,000,000		2
484168-AA-7	KANEBC PIPE LINE OPERATING PRTN 7.750 02/15/2012	02/15/2002	BANK OF AMERICA SECURITIES		1,000,000	1,000,000		2
617446-HD-4	MORGAN STANLEY & CO. CORPORATE 7.250 04/01/2032	03/27/2002	MORGAN STANLEY/DEAN WITTER		999,030	1,000,000		1
90333W-AA-6	U.S. BANK N.A. CORPORATE 6.375 08/01/2011	02/08/2002	MORGAN JP CHASE		1,021,260	1,000,000	2,125	1
136375-BG-6	CANADIAN NATIONAL RAILWAYS CORPORATE 7.375 10/15/2031	02/08/2002	CREDIT SUISSE FIRST BOSTON CORP		1,076,250	1,000,000	28,066	2
884903-AP-0	THOMSON CORPORATION 5.750 02/01/2008	01/16/2002	SALOMON/SMITH BARNEY		995,670	1,000,000		1
4599996 - Bonds - Industrial and Misc - United States					6,011,740	6,000,000	23,688	XXX
4599997 - Bonds - Industrial and Misc - Canada					2,071,920	2,000,000	28,066	XXX
4599998 - Bonds - Industrial and Misc - Other Countries					0	0	0	XXX
4599999 - Total - Bonds - Industrial, Misc.					8,083,660	8,000,000	51,753	XXX
4699999 - Total - Bonds - Credit Tenant Loans					0	0	0	XXX
5399996 - Bonds - Parent, Subs & Affiliate - United States					0	0	0	XXX
5399997 - Bonds - Parent, Subs & Affiliate - Canada					0	0	0	XXX
5399998 - Bonds - Parent, Subs & Affiliate - Other Countries					0	0	0	XXX
5399999 - Total - Bonds - Parent, Subsidiaries, Affiliates					0	0	0	XXX
6099997 - Total - Bonds - Part 3					19,396,410	19,336,654	65,656	XXX
6099999 - Total - Bonds					19,396,410	19,336,654	65,656	XXX
6199999 - Total - Preferred Stocks - Public Utilities					0	XXX	0	XXX
6299999 - Total - Preferred Stocks - Banks, Trusts, Insurance					0	XXX	0	XXX

SCHEDULE D - PART 3

[illegible]

E04.1

STATEMENT AS OF MARCH 31, 2002 OF THE U.S. FINANCIAL LIFE INSURANCE COMPANY

SCHEDULE D - PART 4

Show All Long-Term Bonds and Stock Sold, Redeemed or Otherwise Disposed of by the Company During the Current Quarter

1	2	3	4	5	6	7	8	9	10	11	12	13	14	15	16	17
CUSIP Identi- fication	Description	Disposal Date	Name of Purchaser	Number of Shares of Stock	Consideration	Par Value	Actual Cost	Book/Adjusted Carrying Value at Disposal Date	Increase (Decrease) by Adjustment	Increase (Decrease) by Foreign Exchange Adjustment	Foreign Exchange Gain (Loss) on Disposal	Realized Gain (Loss) on Disposal	Total Gain (Loss) on Disposal	Interest on Bonds Received During Year	Dividends on Stocks Received During Year	NAIC Design- ation (a)
0399996 - Bonds - U.S. Government					0	0	0	0	0	0	0	0	0	0	XXX	XXX
0399999 - Bonds - U.S. Governments					0	0	0	0	0	0	0	0	0	0	XXX	XXX
1099997 - Bonds - All Other Governments - Canada					0	0	0	0	0	0	0	0	0	0	XXX	XXX
1099998 - Bonds - All Other Governments - Other Countries					0	0	0	0	0	0	0	0	0	0	XXX	XXX
1099999 - Bonds - All Other Governments					0	0	0	0	0	0	0	0	0	0	XXX	XXX
1799996 - Bonds - States, Territory, Poss - United States					0	0	0	0	0	0	0	0	0	0	XXX	XXX
1799997 - Bonds - States, Territory, Poss - Canada					0	0	0	0	0	0	0	0	0	0	XXX	XXX
1799998 - Bonds - States, Territory, Poss - Other Countries					0	0	0	0	0	0	0	0	0	0	XXX	XXX
1799999 - Bonds - States, Territories and Possessions					0	0	0	0	0	0	0	0	0	0	XXX	XXX
2499996 - Bonds - Political Subdivisions - United States					0	0	0	0	0	0	0	0	0	0	XXX	XXX
2499997 - Bonds - Political Subdivisions - Canada					0	0	0	0	0	0	0	0	0	0	XXX	XXX
2499998 - Bonds - Political Subdivisions - Other Countries					0	0	0	0	0	0	0	0	0	0	XXX	XXX
2499999 - Bonds - Political Subdivisions					0	0	0	0	0	0	0	0	0	0	XXX	XXX
DISTRICT OF COLUMBIA																
31358E-JG-8	FNR 1990-61 H 7.000 06/01/2020	03/25/2002	MBS PAYDOWN		50,510	50,510	43,825	50,248	261	0	0	0	0	598		1
31358E-QE-5	FNR 1990-77 D 9.000 05/01/2020	03/28/2002	MBS PAYDOWN		55,220	55,220	56,842	55,232	(13)	0	0	0	0	830		1
31358J-SN-2	FNR 1991-123 EB 8.000 09/01/2021	03/28/2002	MBS PAYDOWN		39,410	39,410	40,247	39,412	(2)	0	0	0	0	552		1PE
31358L-JB-3	FNR G92-7 JQ 8.500 12/01/2021	03/25/2002	MBS PAYDOWN		32,952	32,952	33,611	32,964	(12)	0	0	0	0	443		1
31358N-CM-2	FNR 1992-82 E 7.000 06/01/2006	03/25/2002	MBS PAYDOWN		60,644	60,644	55,006	60,428	216	0	0	0	0	676		1
31358R-EU-3	FNR 1992-202 J 7.500 10/01/2003	03/28/2002	MBS PAYDOWN		286,577	286,577	270,905	285,835	743	0	0	0	0	3,451		1
31358T-L5-6	FNR 1993-33 H 6.750 07/01/2003	03/25/2002	MBS PAYDOWN		10,772	10,772	10,735	10,755	17	0	0	0	0	121		1
31359D-JG-9	FNR 1993-156 B 6.500 05/01/2002	03/28/2002	MBS PAYDOWN		271,053	271,053	261,651	269,805	1,248	0	0	0	0	2,618		1
31359H-B8-6	FNR 1994-82 B 8.000 01/01/2002	01/25/2002	MBS PAYDOWN		96,623	96,623	98,193	96,623	0	0	0	0	0	644		1
TOTAL DISTRICT OF COLUMBIA					903,760	903,760	871,014	901,303	2,457	0	0	0	0	9,934	XXX	XXX
312903-KT-3	FHR 116 G 8.500 08/01/2017	03/01/2002	MBS PAYDOWN		66,535	66,535	68,135	66,551	(17)	0	0	0	0	1,032		1
312905-WS-7	FHR 1074 H 8.500 04/01/2019	03/21/2002	MBS PAYDOWN		40,785	40,785	41,740	40,791	(6)	0	0	0	0	701		1PE
312909-AA-6	FHR 1255 H 8.500 05/01/2014	03/01/2002	MBS PAYDOWN		137,009	137,009	143,860	137,058	(49)	0	0	0	0	2,313		1PE
31340Y-FN-4	FHR 19 F 8.500 01/01/2019	03/01/2002	MBS PAYDOWN		23,192	23,192	23,974	23,196	(4)	0	0	0	0	297		1
3199996 - Bonds - Special Revenues - United States					1,171,279	1,171,279	1,148,724	1,168,899	2,380	0	0	0	0	14,276	XXX	XXX
3199997 - Bonds - Special Revenues - Canada					0	0	0	0	0	0	0	0	0	0	XXX	XXX
3199998 - Bonds - Special Revenues - Other Countries					0	0	0	0	0	0	0	0	0	0	XXX	XXX
3199999 - Bonds - Special Revenues					1,171,279	1,171,279	1,148,724	1,168,899	2,380	0	0	0	0	14,276	XXX	XXX
3899996 - Bonds - Public Utilities - United States					0	0	0	0	0	0	0	0	0	0	XXX	XXX
3899997 - Bonds - Public Utilities - Canada					0	0	0	0	0	0	0	0	0	0	XXX	XXX
3899998 - Bonds - Public Utilities - Other Countries					0	0	0	0	0	0	0	0	0	0	XXX	XXX
3899999 - Bonds - Public Utilities					0	0	0	0	0	0	0	0	0	0	XXX	XXX
INDUSTRIAL & MISC. (UNAFFIL)																
UNITED STATES																
048395-AA-5	ATLANTIC COAST AIRLINES CORPORATE 7.200 01/01/2014	01/01/2002	SINKING FUND REDEMPTION		10,363	10,363	10,363	10,363	0	0	0	0	0	0		2
36157N-CW-2	GE CAPITAL MORTGAGE SERVICES, INC. 7.000 10/01/2027	03/01/2002	MBS PAYDOWN		158,407	158,407	147,170	158,207	200	0	0	0	0	2,344		2
751277-AM-6	RALSTON PURINA CORPORATE 9.250 10/15/2009	03/19/2002	MORGAN JP CHASE		917,753	750,000	774,375	766,709	(339)	0	0	151,382	151,382	30,255		1

STATEMENT AS OF MARCH 31, 2002 OF THE U.S. FINANCIAL LIFE INSURANCE COMPANY

SCHEDULE D - PART 4

Show All Long-Term Bonds and Stock Sold, Redeemed or Otherwise Disposed of by the Company During the Current Quarter

1	2	3	4	5	6	7	8	9	10	11	12	13	14	15	16	17
CUSIP Identi- fication	Description	Disposal Date	Name of Purchaser	Number of Shares of Stock	Consideration	Par Value	Actual Cost	Book/Adjusted Carrying Value at Disposal Date	Increase (Decrease) by Adjustment	Increase (Decrease) by Foreign Exchange Adjustment	Foreign Exchange Gain (Loss) on Disposal	Realized Gain (Loss) on Disposal	Total Gain (Loss) on Disposal	Interest on Bonds Received During Year	Dividends on Stocks Received During Year	NAIC Desig- nation (a)
762426-AA-2	RHONE POULENC RORER CORPORATE 7.750 01/15/2002	02/06/2002	VARIOUS		750,000	750,000	725,625	749,825	175	0	0	0	0	29,063		1
4599996	- Bonds - Industrial and Misc - United States				1,086,522	918,769	931,907	935,279	(140)	0	0	151,382	151,382	32,599	XXX	XXX
4599997	- Bonds - Industrial and Misc - Canada				0	0	0	0	0	0	0	0	0	0	XXX	XXX
4599998	- Bonds - Industrial and Misc - Other Countries				750,000	750,000	725,625	749,825	175	0	0	0	0	29,063	XXX	XXX
4599999	- Bonds - Industrial and Miscellaneous				1,836,522	1,668,769	1,657,532	1,685,105	35	0	0	151,382	151,382	61,662	XXX	XXX
4699999	- Bonds - Credit Tenant Loans				0	0	0	0	0	0	0	0	0	0	XXX	XXX
5399996	- Bonds - Parent, Subs & Affiliate - United States				0	0	0	0	0	0	0	0	0	0	XXX	XXX
5399997	- Bonds - Parent, Subs & Affiliate - Canada				0	0	0	0	0	0	0	0	0	0	XXX	XXX
5399998	- Bonds - Parent, Subs & Affiliate - Other Countries				0	0	0	0	0	0	0	0	0	0	XXX	XXX
5399999	- Bonds - Parent, Subsidiaries and Affiliates				0	0	0	0	0	0	0	0	0	0	XXX	XXX
6099997	- Bonds - Part 4				3,007,801	2,840,049	2,806,257	2,854,004	2,415	0	0	151,382	151,382	75,938	XXX	XXX
6099999	- Total - Bonds				3,007,801	2,840,049	2,806,257	2,854,004	2,415	0	0	151,382	151,382	75,938	XXX	XXX
6199999	- Preferred Stocks - Public Utilities				0	XXX	0	0	0	0	0	0	0	XXX	0	XXX
6299999	- Preferred Stocks - Banks, Trust and Insurance Companies				0	XXX	0	0	0	0	0	0	0	XXX	0	XXX
6399999	- Preferred Stocks - Industrial and Miscellaneous				0	XXX	0	0	0	0	0	0	0	XXX	0	XXX
6499999	- Preferred Stocks - Parent, Subsidiaries and Affiliates				0	XXX	0	0	0	0	0	0	0	XXX	0	XXX
6599997	- Preferred Stocks - Part 4				0	XXX	0	0	0	0	0	0	0	XXX	0	XXX
6599999	- Total - Preferred Stocks				0	XXX	0	0	0	0	0	0	0	XXX	0	XXX
6699999	- Common Stocks - Public Utilities				0	XXX	0	0	0	0	0	0	0	XXX	0	XXX
6799999	- Common Stocks - Banks, Trust and Insurance Companies				0	XXX	0	0	0	0	0	0	0	XXX	0	XXX
6899999	- Common Stocks - Industrial and Miscellaneous				0	XXX	0	0	0	0	0	0	0	XXX	0	XXX
6999999	- Common Stocks - Parent, Subsidiaries and Affiliates				0	XXX	0	0	0	0	0	0	0	XXX	0	XXX
7099997	- Common Stocks - Part 4				0	XXX	0	0	0	0	0	0	0	XXX	0	XXX
7099999	- Total - Common Stocks				0	XXX	0	0	0	0	0	0	0	XXX	0	XXX
7199999	- Total - Preferred and Common Stocks				0	XXX	0	0	0	0	0	0	0	XXX	0	XXX
7299999	Totals				3,007,801	XXX	2,806,257	2,854,004	2,415	0	0	151,382	151,382	75,938	0	XXX

(a) For all common stock bearing the NAIC designation "U" provide: the number of such issues

Schedule DB - Part A - Section 1

NONE

Schedule DB - Part B - Section 1

NONE

Schedule DB - Part C - Section 1

NONE

Schedule DB - Part D - Section 1

NONE

STATEMENT AS OF MARCH 31, 2002 OF THE U.S. FINANCIAL LIFE INSURANCE COMPANY

SCHEDULE E - PART 1 - CASH

[illegible]